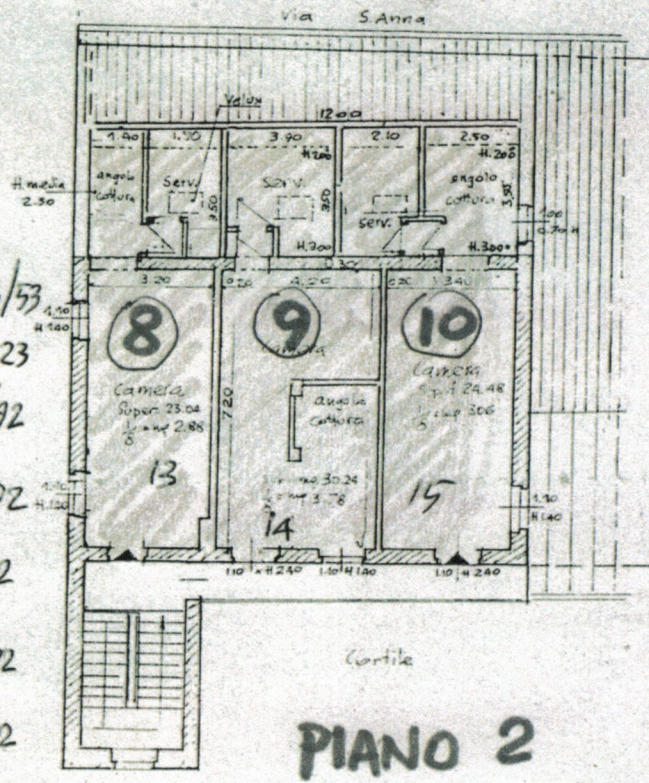


Volumetria sottotetto:
 $12.00 \times 3.90 = \text{mq. } 47.00 \times \text{H media } 2.50 = \text{mc. } 117.50$

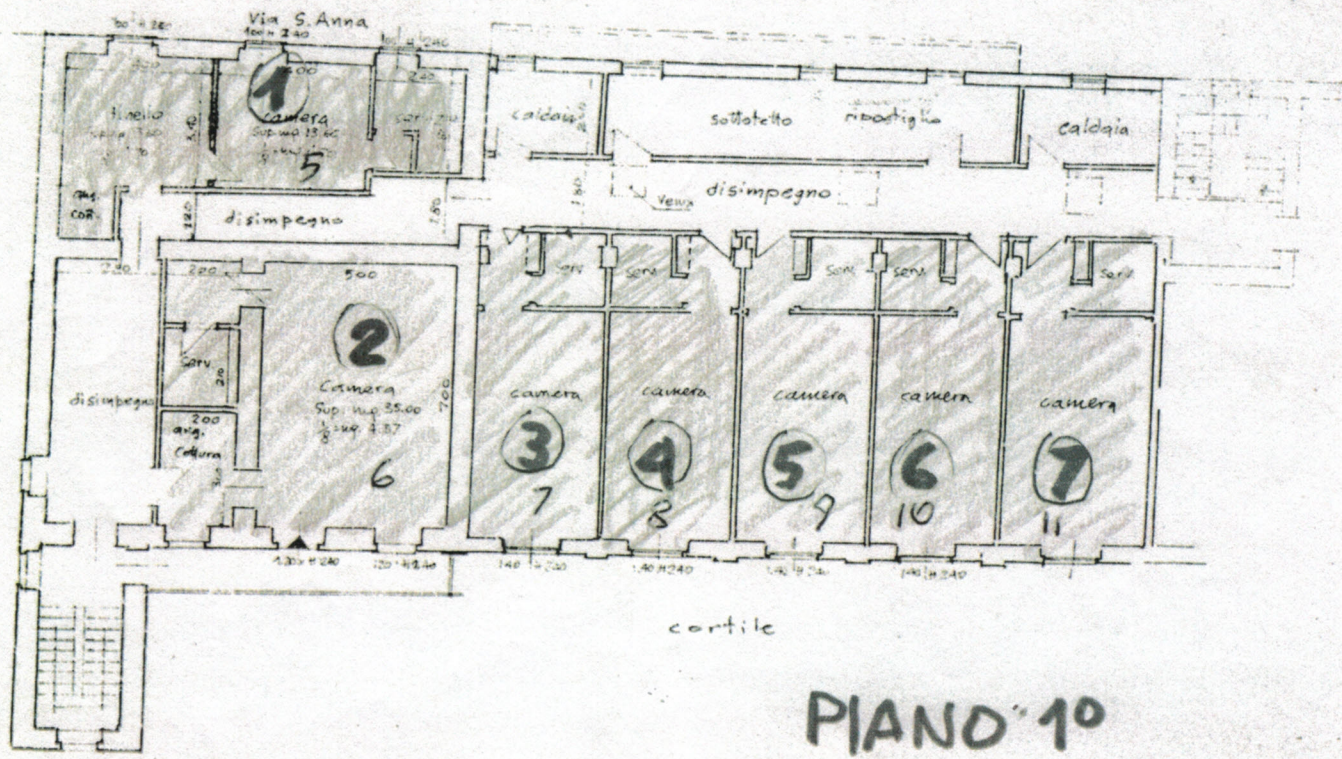
Cat. A/3 CL 1

- ① F.38 n.415 sub.5 R 126/53
- ② " " " 6 " 101.23
- ③ " " " 7 " 75.92
- ④ " " " 8 " 75.92
- ⑤ " " " 9 " 75.92
- ⑥ " " " 10 " 75.92
- ⑦ " " " 11 " 75.92
- ⑧ " " " 13 " 101.23
- ⑨ " " " 14 " 75.92
- ⑩ " " " 15 " 75.92



PIANO 2

PIANTA PIANO 2°



PIANO 10

PIANTA PIANO 10°