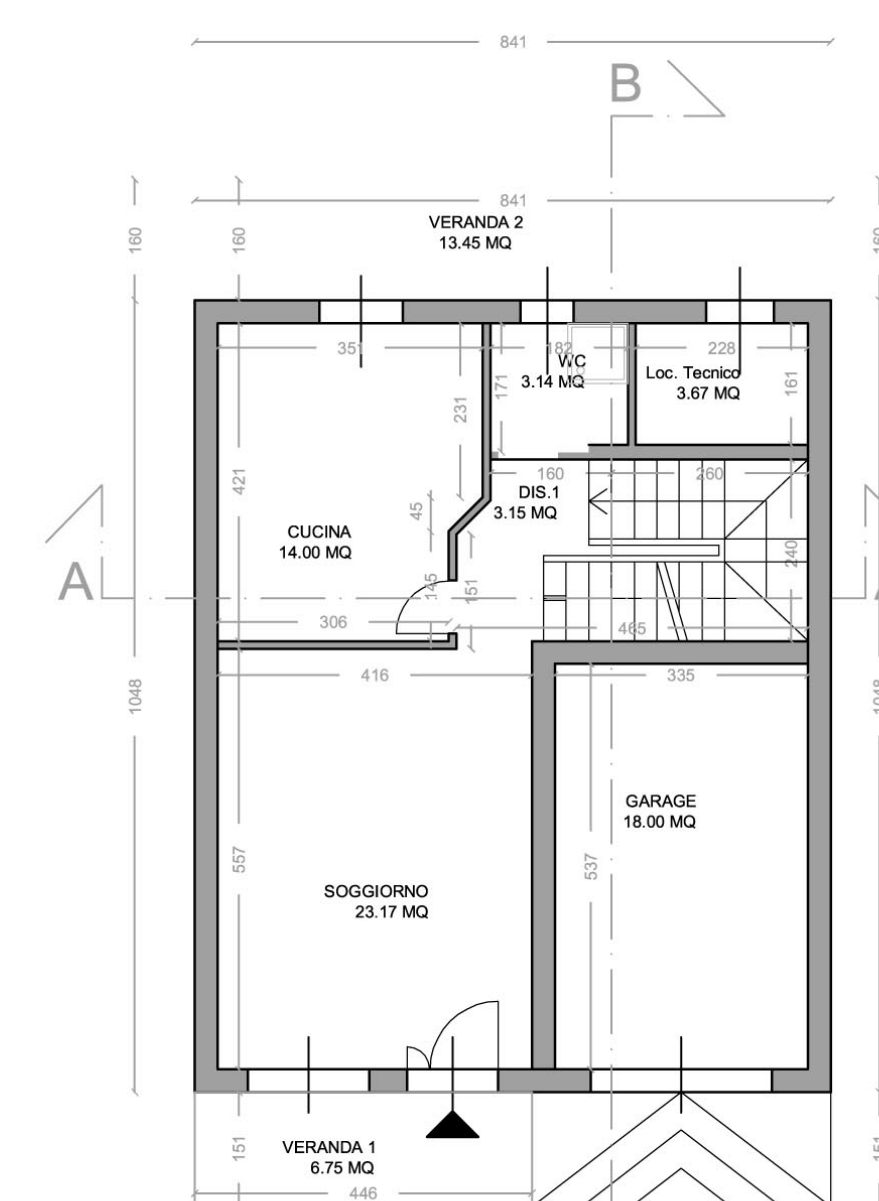


COOPERATIVA S. ANTONIO DI PADOVA TRE - EDILIZIA RESIDENZIALE PUBBLICA - L.R. 457/78

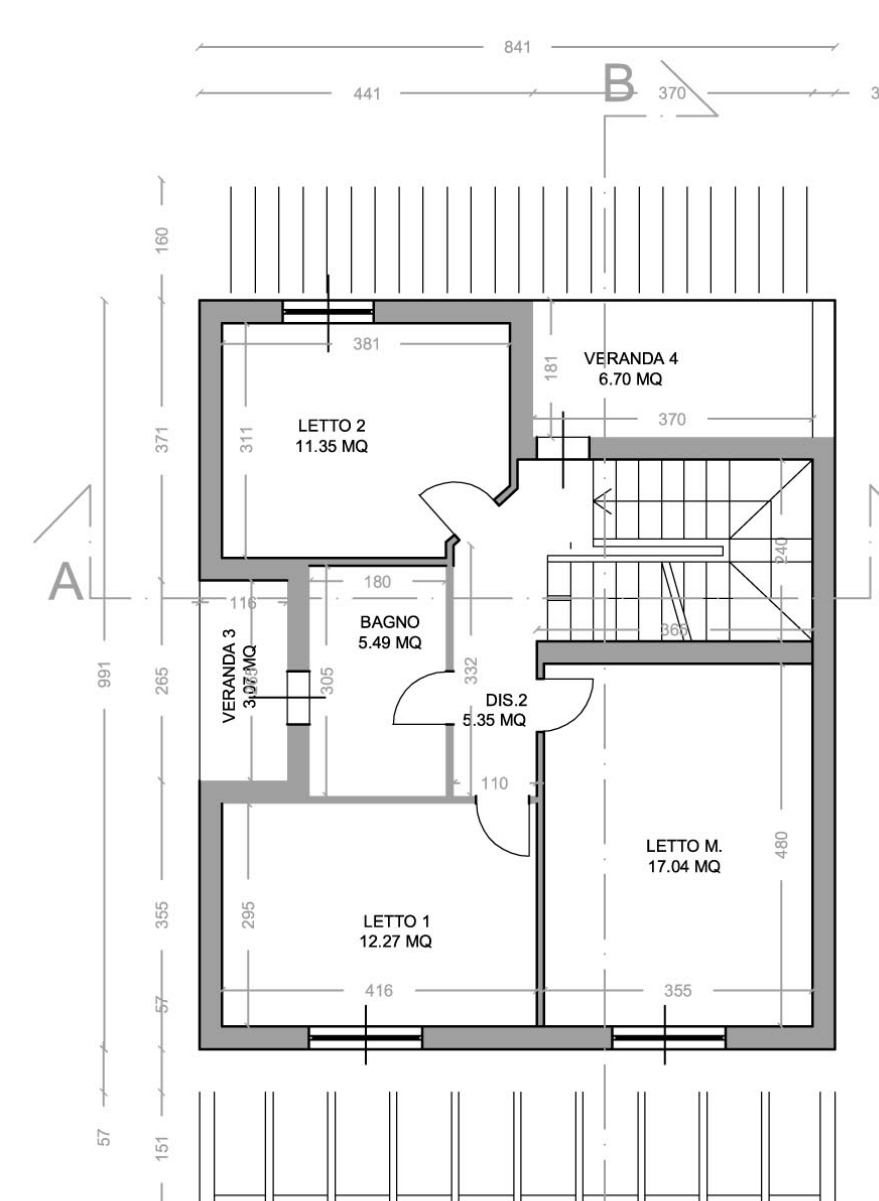


TIPOLOGIA "A"

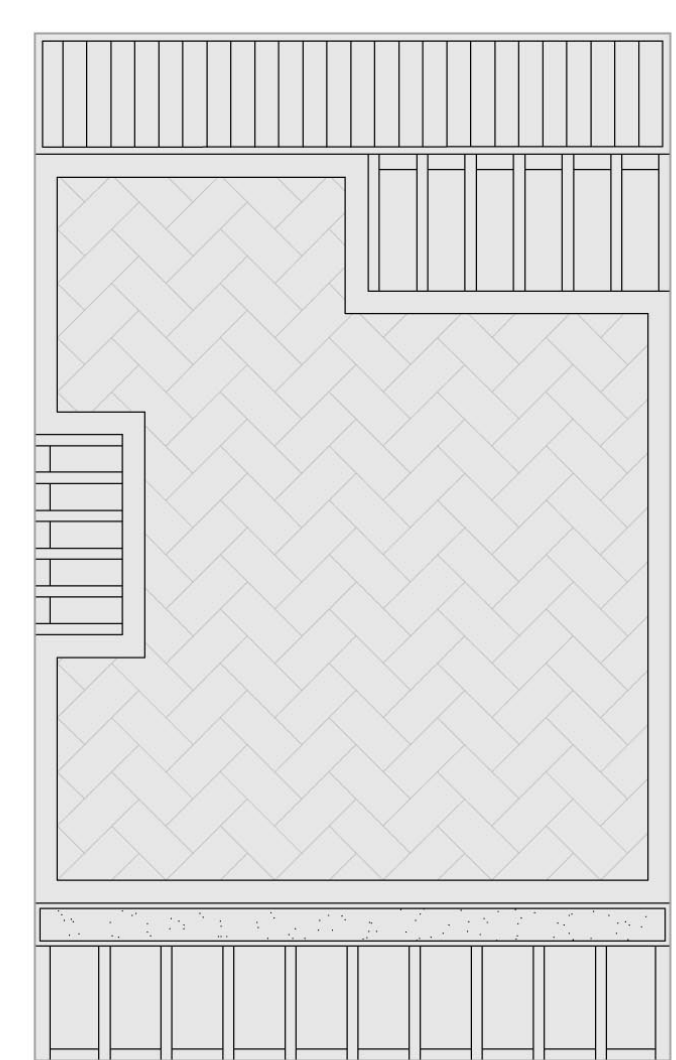
TIPOLOGIA "B"



PIANTA PIANO TERRA
Tipologia A1= A2 SPECCHIATA

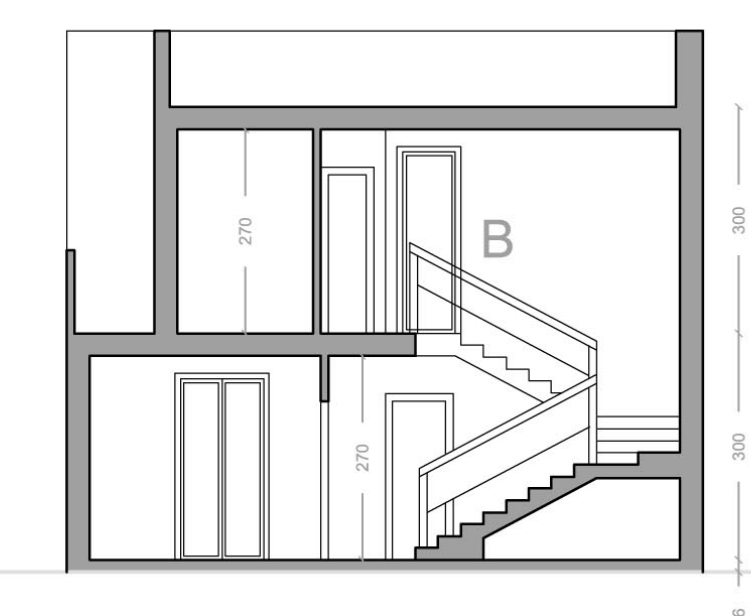


PIANTA PIANO PRIMO
Tipologia "A1= A2 SPECCHIATA"

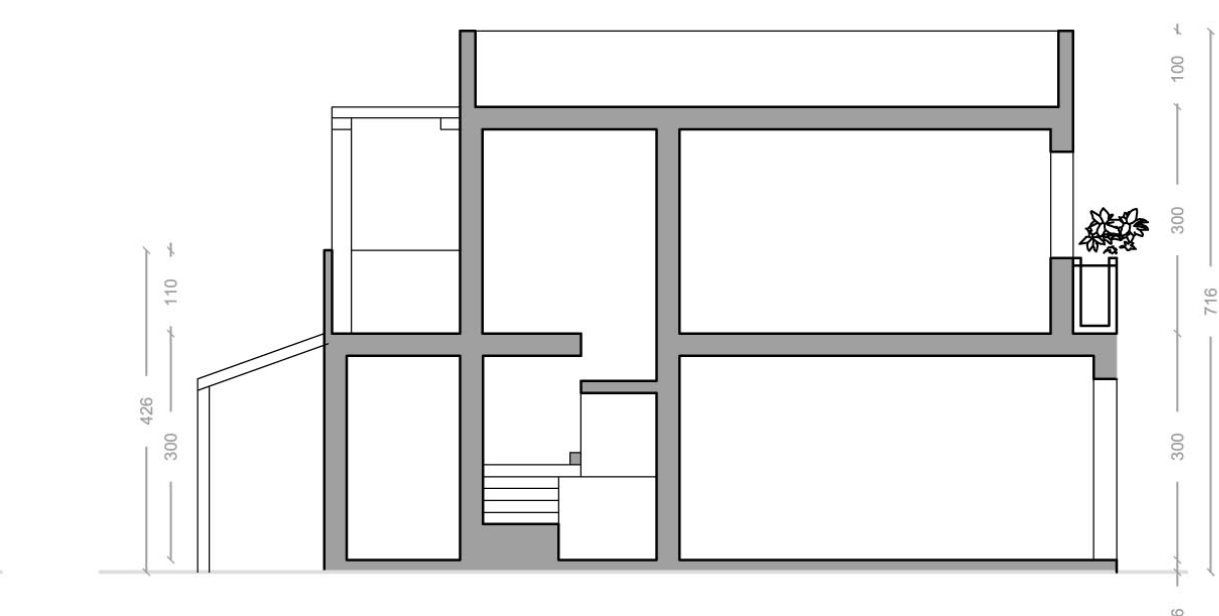


PIANTA COPERTURA
Tipologia "A1= A2 SPECCHIATA"

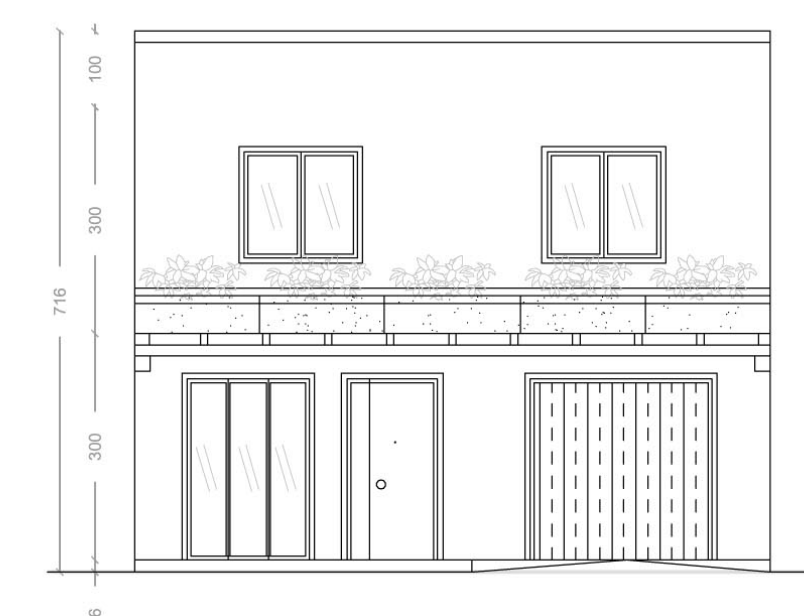
Superfici Tipologia A		
		MQ
Locali Tecnici		3,67
Scale		7,68
Garage		18,00
Superficie calpestabile interna		120,68
Verande pt	6,75 + 13,45	20,20
Verande p1	6,70 + 3,07	9,77
Superficie calpestabile complessiva		150,65
Superficie complessiva lorda		191,88



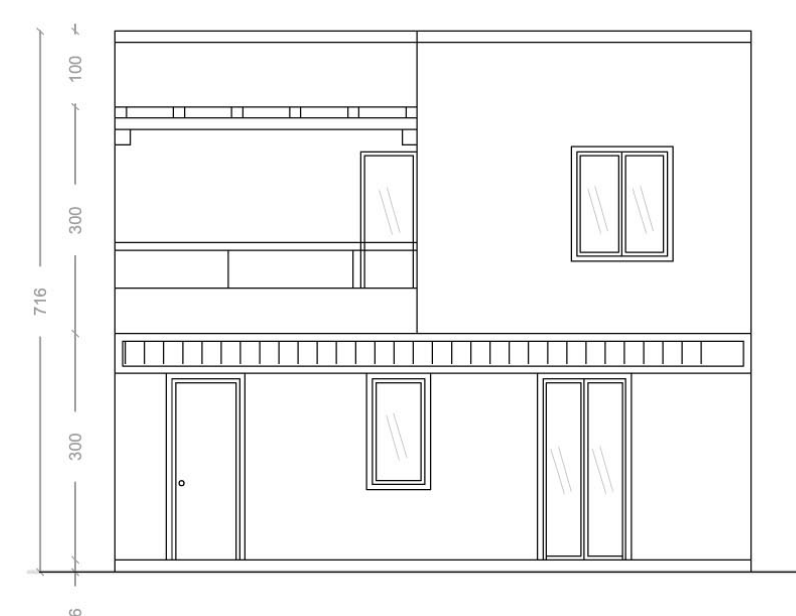
SEZIONE AA
Tipologia "A1= A2 SPECCHIATA"



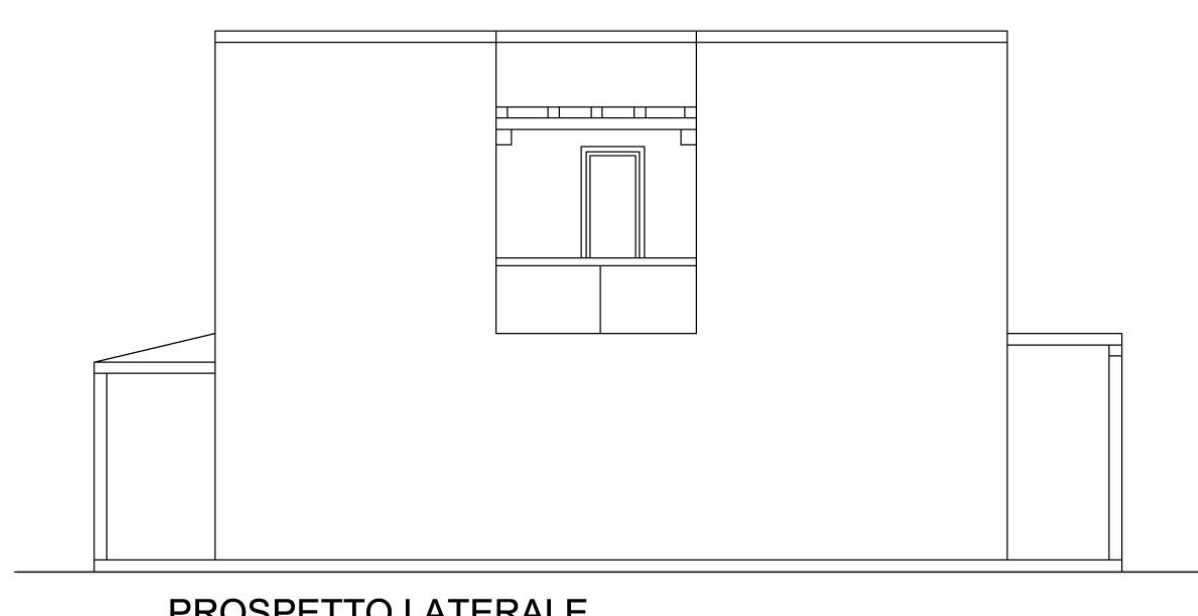
SEZIONE BB
Tipologia "A1= A2 SPECCHIATA"



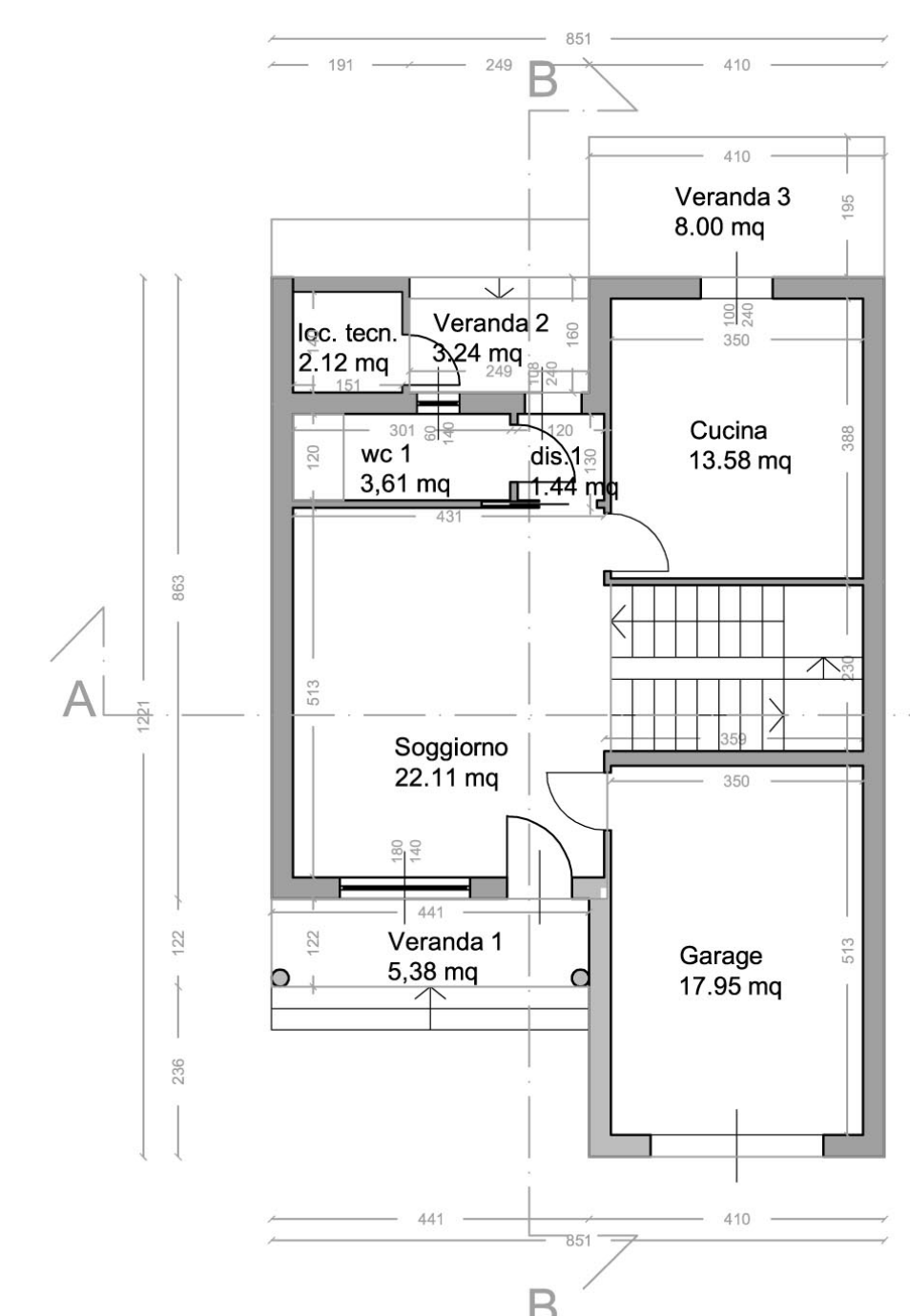
PROSPETTO PRINCIPALE



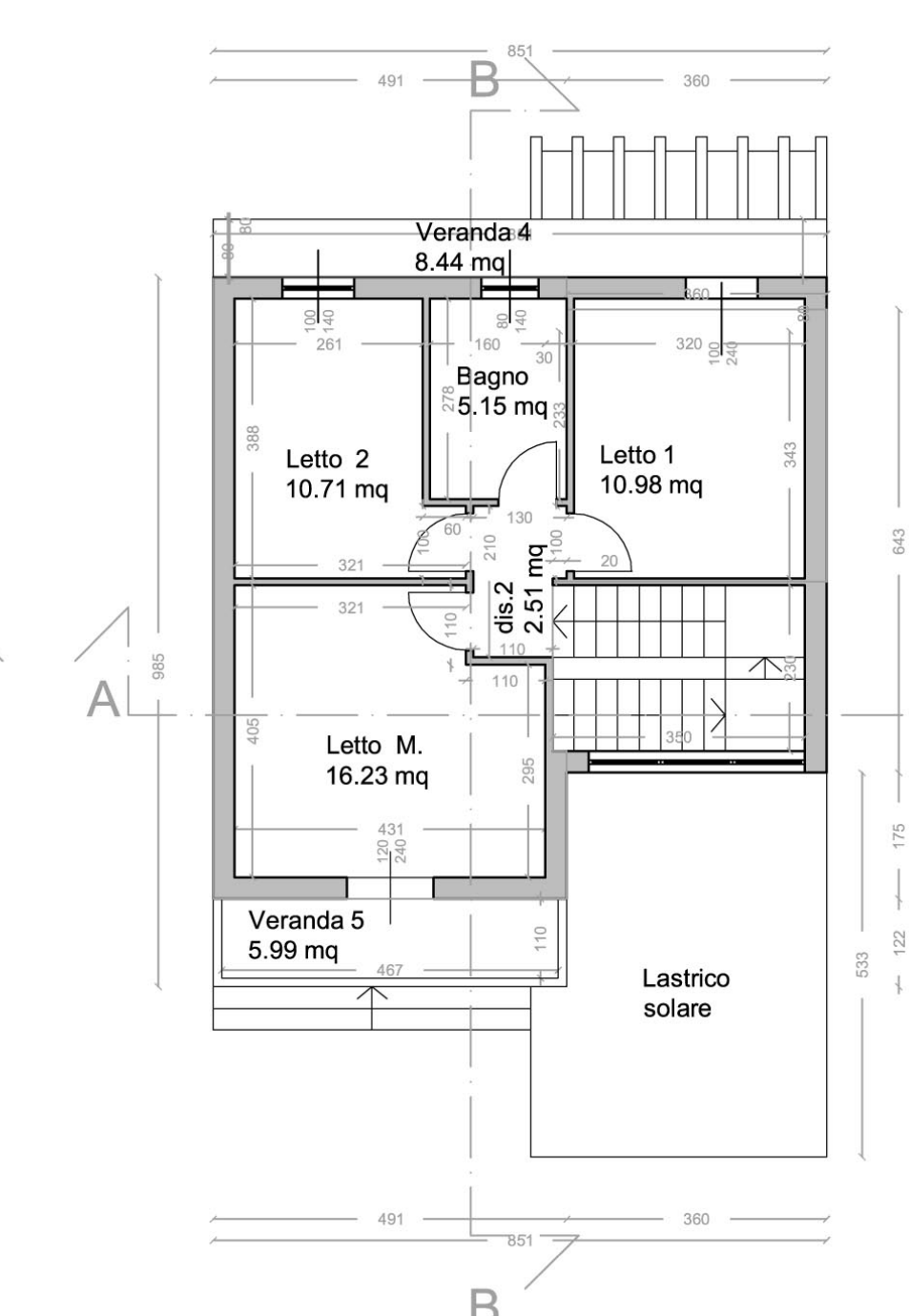
PROSPETTO POSTERIORE



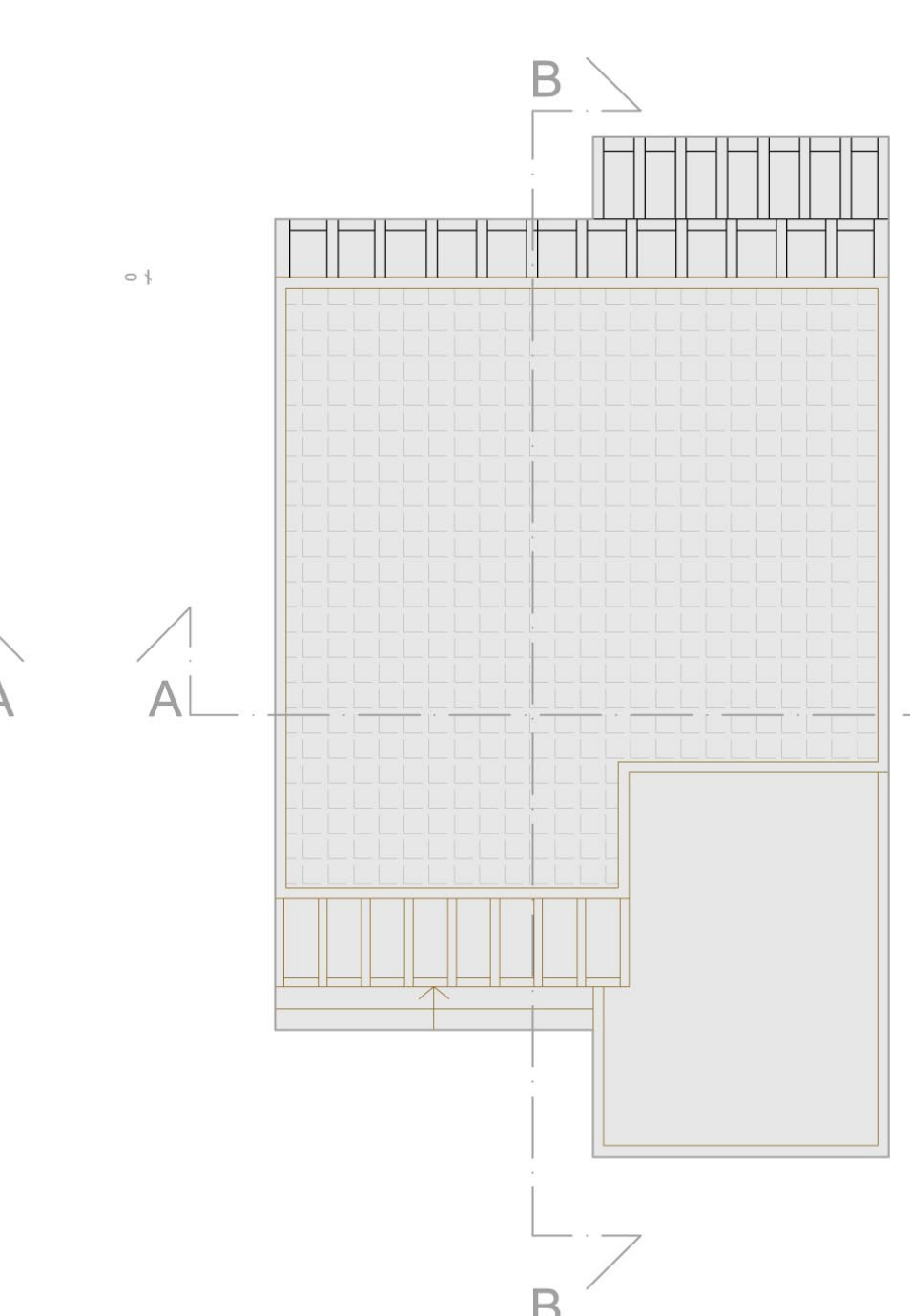
PROSPETTO LATERALE



PROSPETTO ANTERIORE
Tipologia "B1= B2 SPECCHIATA"



PROSPETTO POSTERIORE
Tipologia "B1= B2 SPECCHIATA"



SEZIONE AA
Tipologia "B1= B2 SPECCHIATA"

Superfici Tipologia B		
		MQ
Locali Tecnici		2,11
Scale		8,26
Garage		18,00
Superficie calpestabile interna		112,61
Verande pt	5,38 + 3,24 + 8,00	16,62
Verande p1	8,44 + 5,99	14,43
Superficie calpestabile complessiva		143,66
Superficie complessiva lorda		181,39

SEZIONE BB
Tipologia "B1= B2 SPECCHIATA"