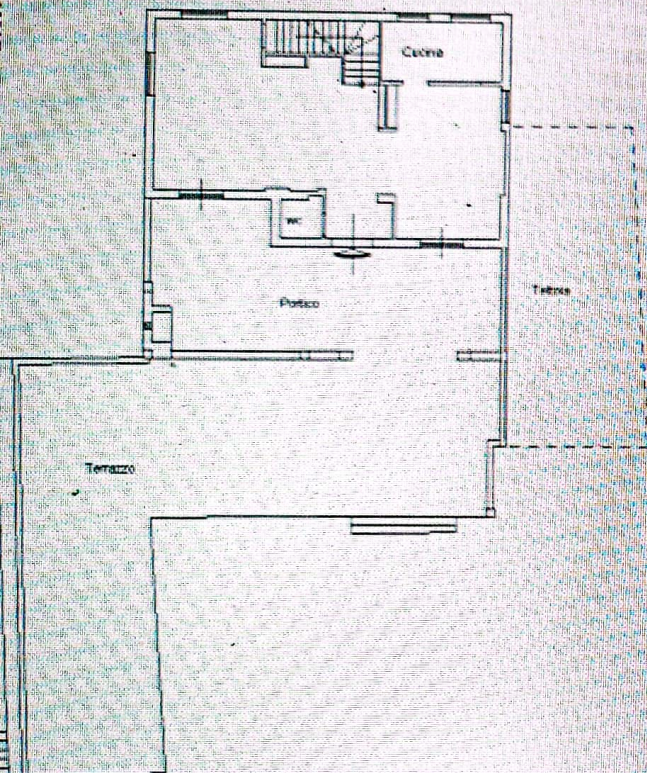


# ABITAZIONE VILLINO "A"

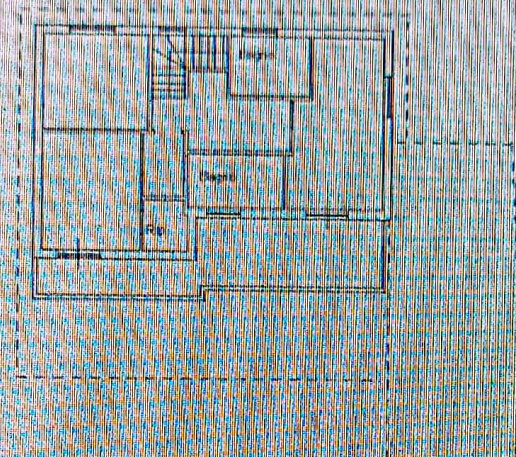
## PIANO TERRENO

ABITAZIONE  
H = 3.00 m



## PIANO PRIMO

ABITAZIONE  
H = 2.70 m



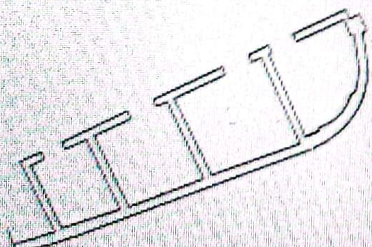
## PIANO PRIMO SEMINTERRATO

CANTINA E ABITAZIONE  
H = 2.70 m



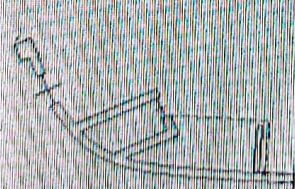
## PIANO TERRENO

MAGAZZINO  
Hm = 2.20 m



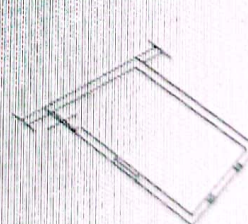
## PIANO TERRENO

RIPOSTIGLIO + LEGNAIA  
Hm = 1.80 m



## PIANO TERRENO

MAGAZZINO  
Hm = 2.00 m



ORIENTAMENTO

