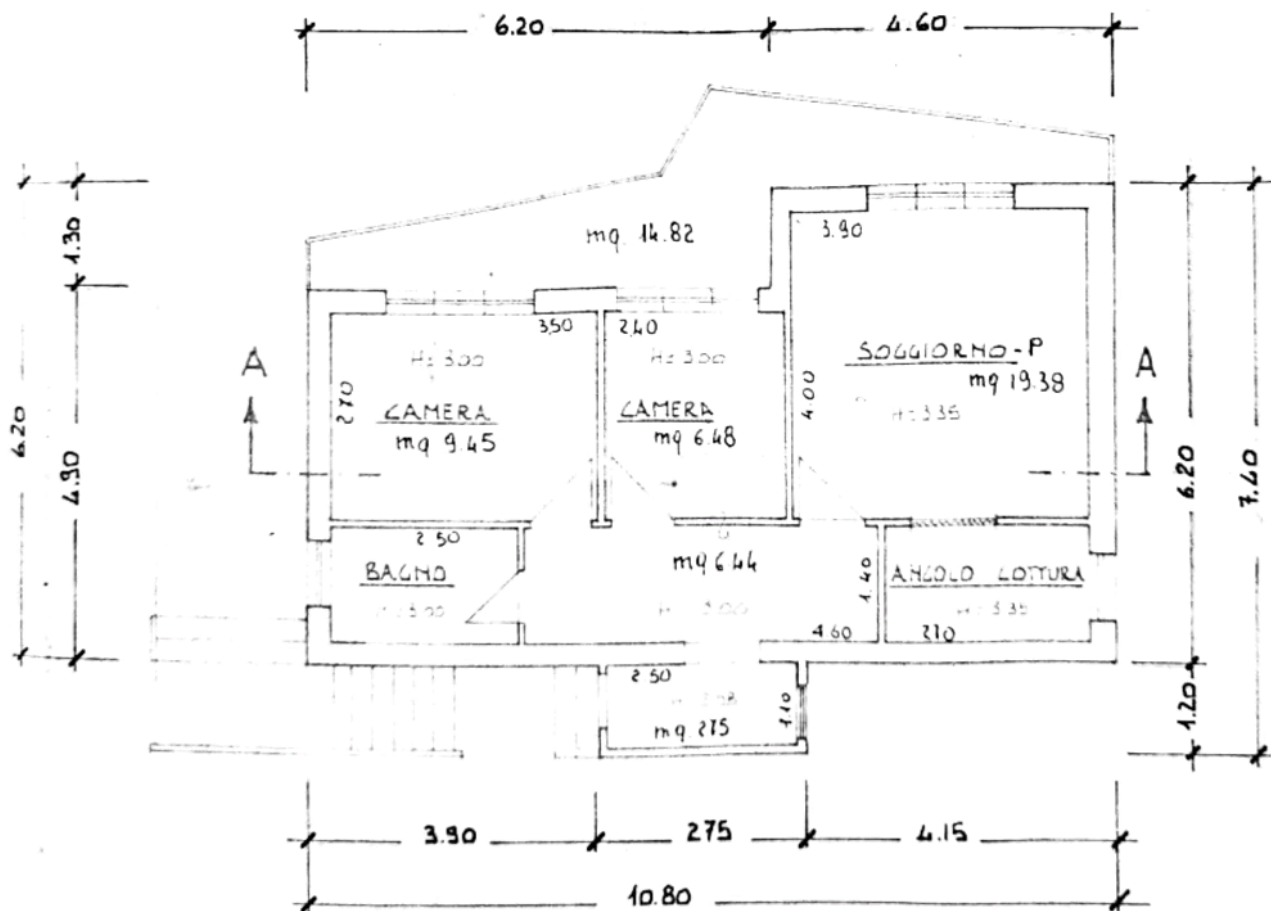
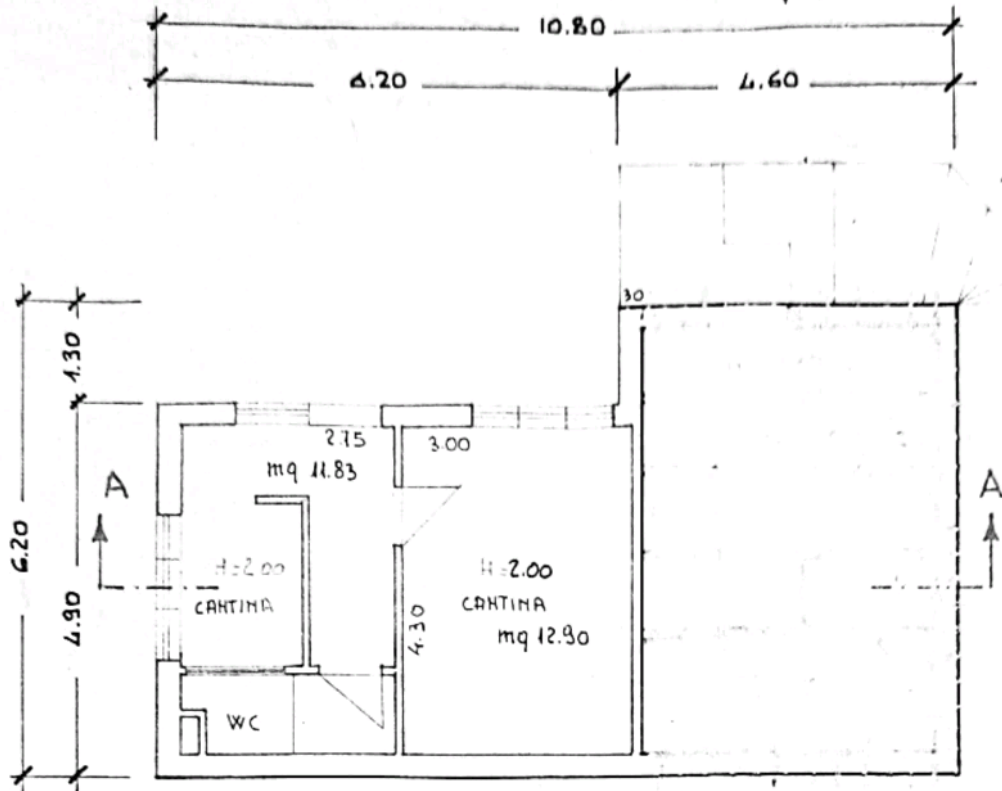


PIANTA PIANO TERRA

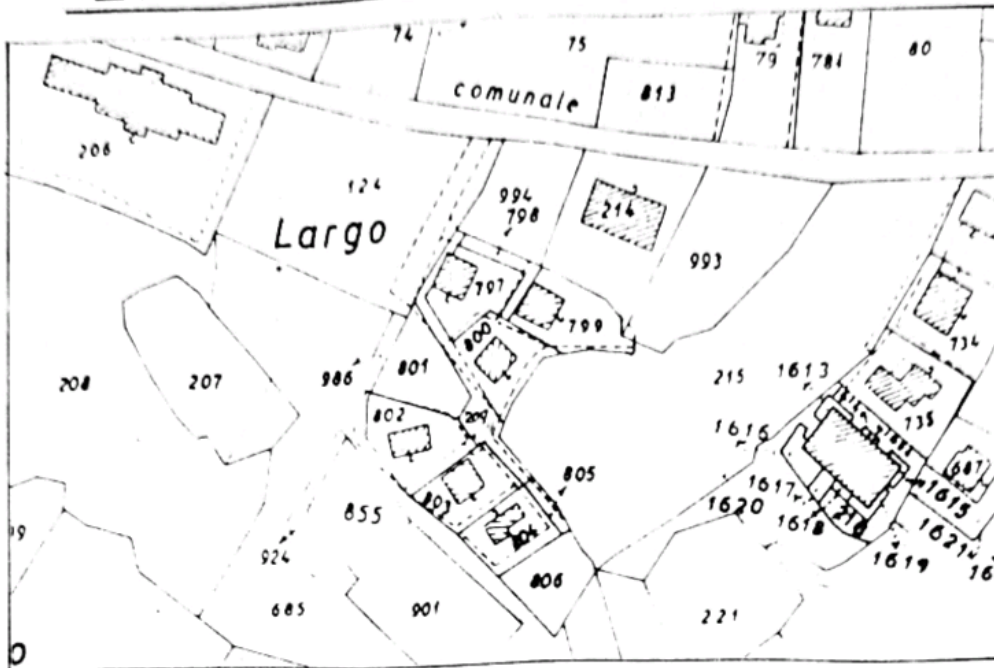
$S_n = mq\ 24.73$
 $S_L = mq\ 31.85$
 $V = mc\ 13.26$



PIANTA PIANO PRIMO

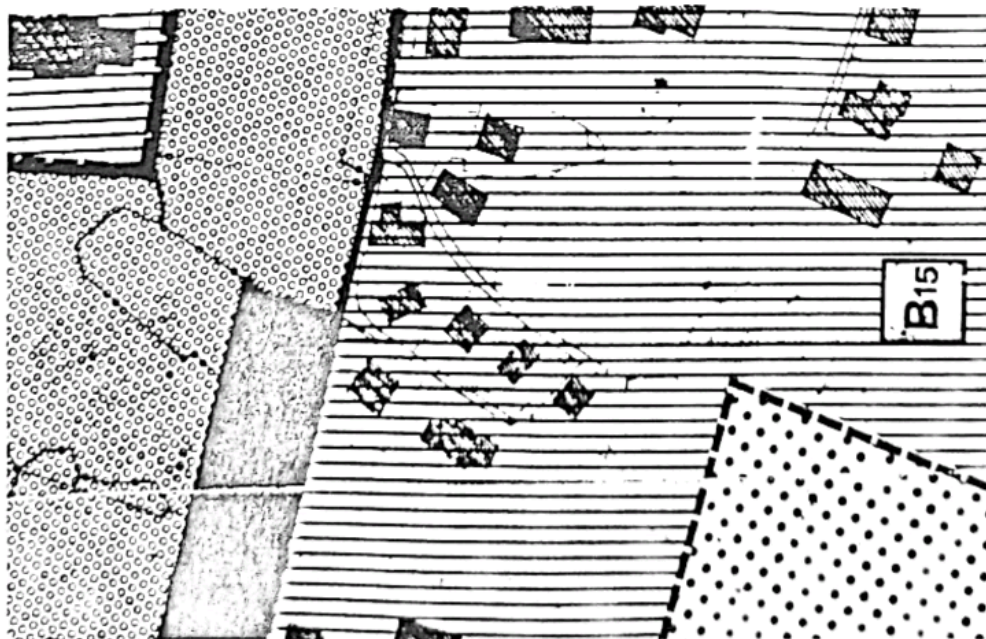
$S_n = 48.00\ mq$
 $S_L = 62.21\ mq$
 $V = 213.94\ mc$

STRALCIO CATASTALE sc. 1:2000

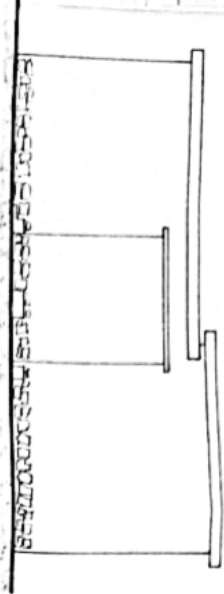


F. 10 MAPP. 803

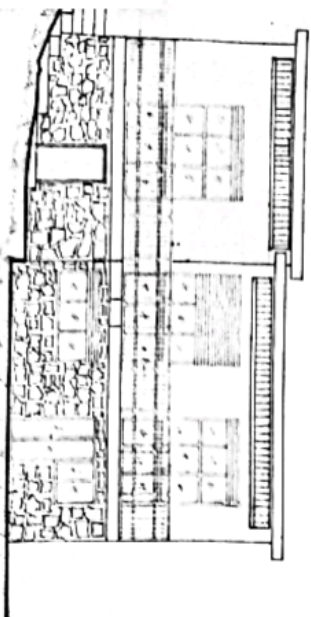
ESTRATTO DI P.R.G. sc. 1:2000



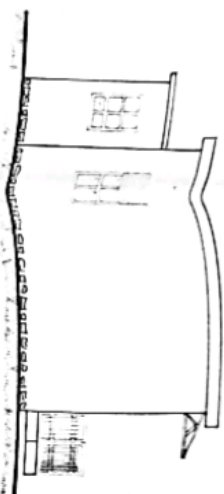
ZONA DI P.R.G. B15



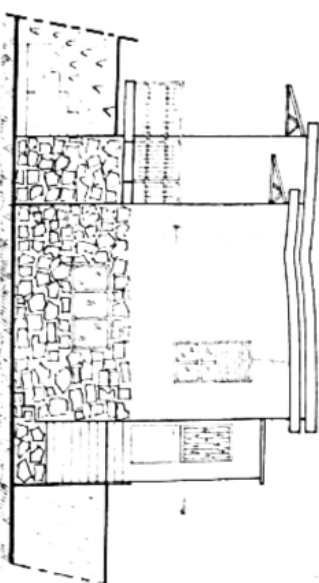
PROSPETTO NORD



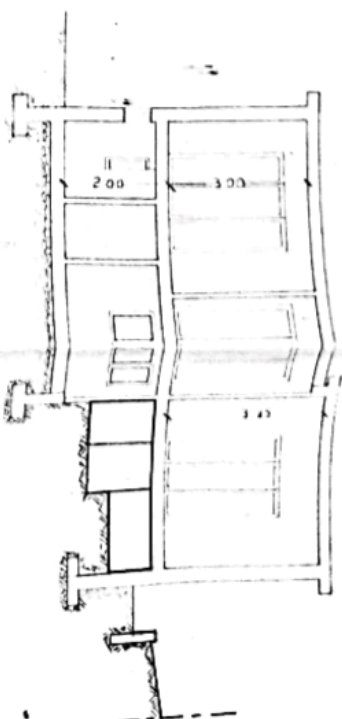
PROSPETTO SUD



PROSPETTO OVEST



PROSPETTO EST



SEZIONE A-A