



DELE FINANZE
 GENERALE DEL CATASTO E DEI SERVIZI TECNICI ERARIALI

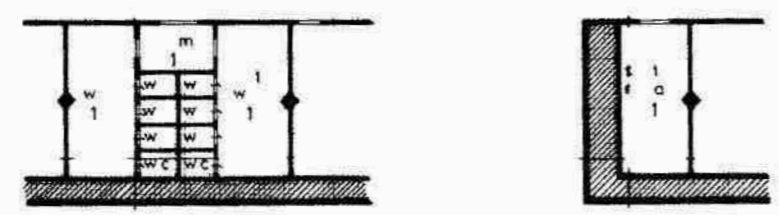
Lir 100

NUOVO CATASTO EDILIZIO URBANO

Planimetria dell'immobile situata in Comune di MEZZANA - Via MARILLEVA 1400
 Ditta SPA con sede in TRENTO
 All'atto di pubblicazione presentata all'Ufficio Tecnico Erariale di TRENTO

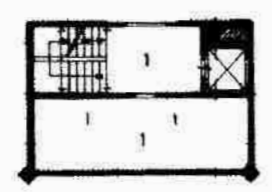
CC DI MEZZANA PEDIF N 359 PTAV N 793 SCHEDA N
 F MAPPA N 8 PM N 105 SUB N 156

PROPRIETA' COMUNI



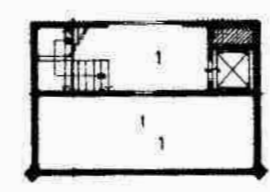
SECONDO PIANO H m 250

corpo A
ped 359



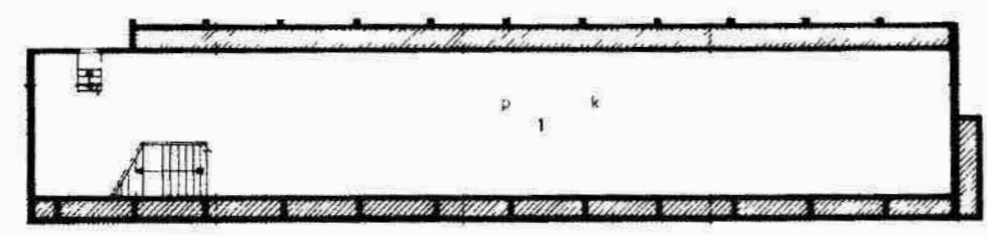
SECONDO PIANO H m 250

corpo B



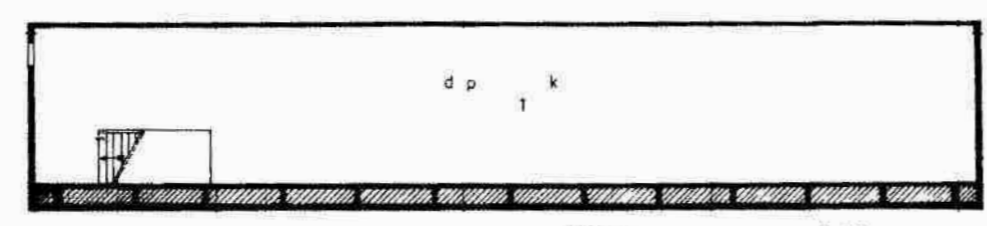
QUARTO PIANO H m 250

corpo B
ped 354

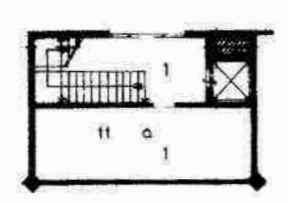


TERZO PIANO H m 240

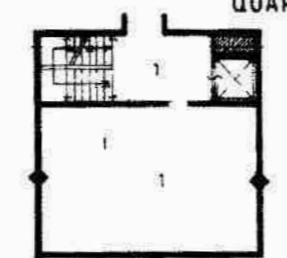
corpo A
ped 354



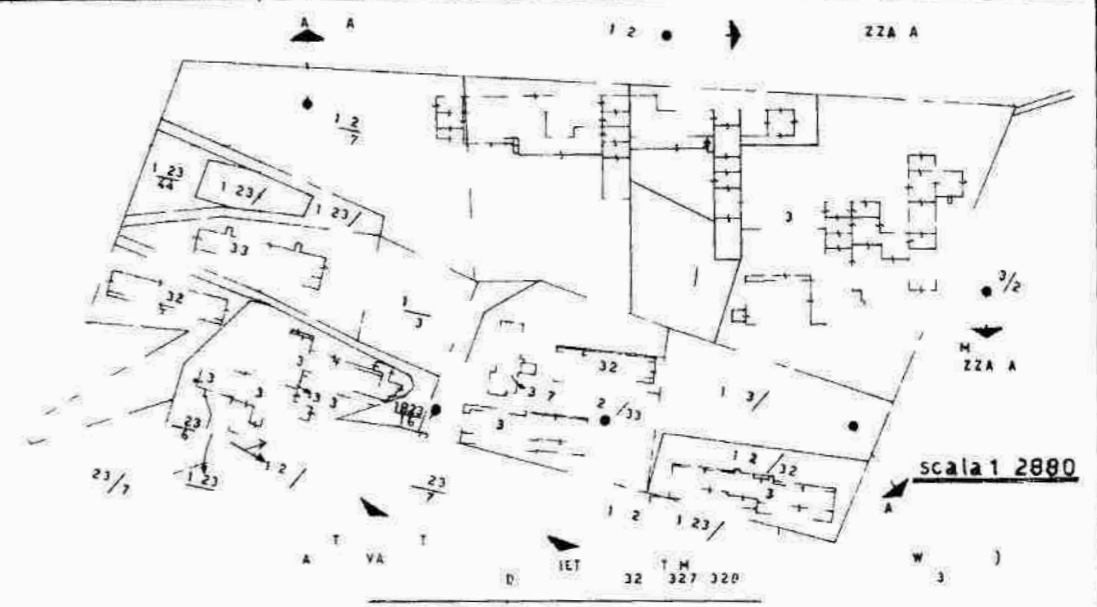
QUARTO PIANO H m 240



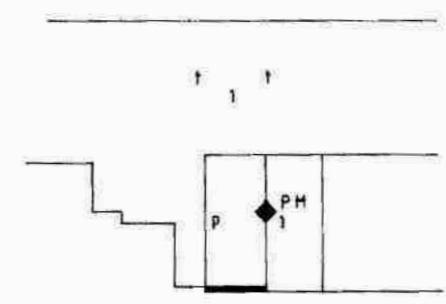
PRIMO PIANO H m 250



SECONDO PIANO H m 250



scala 1:2880



PRIMO PIANO H m 350



ORIENTAMENTO
 No d
 SCALA DI 1:200

SPAZIO RISERVATO PER LE ANNOTAZIONI D'UFFICIO

DATA	15 MAR 1986
PR T N	

F 306



DELLE FINANZE
GENERALE DEL CATASTO E DEI SERVIZI TECNICI ERARIALI

M A (N) no Edil Urb no)

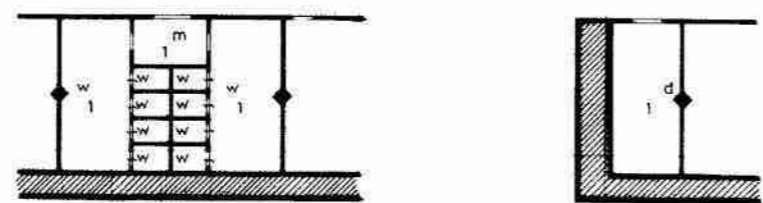
Lir 100

NUOVO CATASTO EDILIZIO URBANO

Plan met ca d ll mmob l tuat n l C mun d MEZZANA Via loc MARILLEVA 1400
Ditta SPA sede n TRENTO
All g ta ll di huara n pr nt t ll Uffi T mo E n l di TRENTO

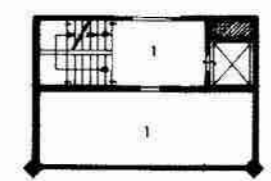
C C DI MEZZANA	PEDIF N 359	PTAV N 793	SCHEDA N
F MAPPA N 8	PM N 105		SUB N 105

PROPRIETA COMUNI



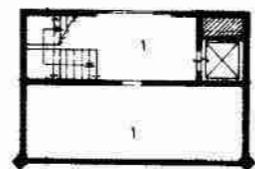
SECONDO PIANO H m 250

corpo A
ped 359



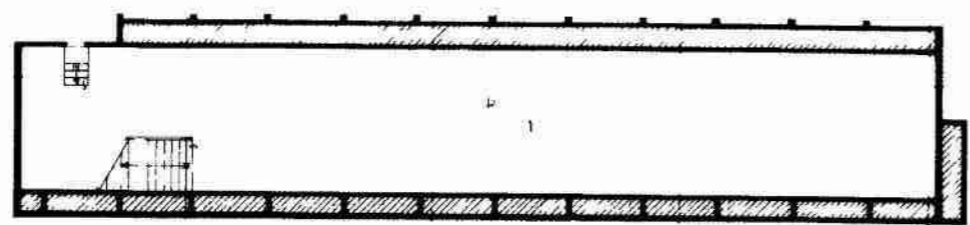
SECONDO PIANO H m 250

corpo B
ped 359



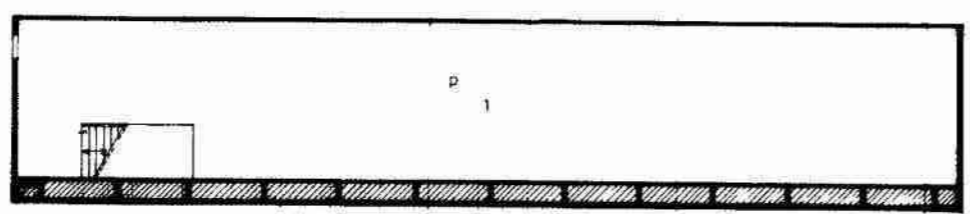
QUARTO PIANO H m 250

corpo B
ped 354

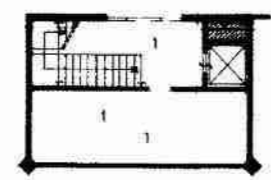


TERZO PIANO H m 240

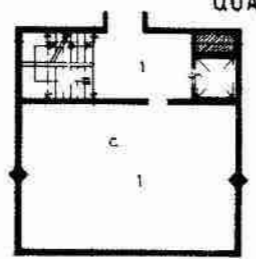
corpo A
ped 354



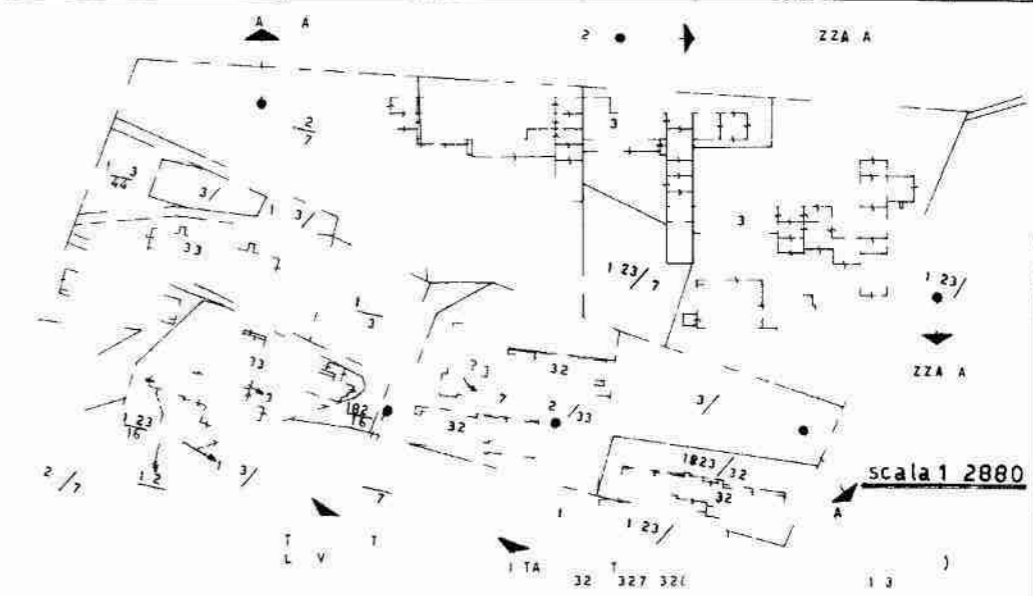
QUARTO PIANO H m 240



PRIMO PIANO H m 250



SECONDO PIANO H m 250



scala 1:2880



SETTIMO PIANO H m 250

ORIENTAMENTO
No d
SCALA DI T 200

SPAZIO RISERVATO PER LE ANNOTAZIONI D UFFICIO

DATA _____

PROT N _____