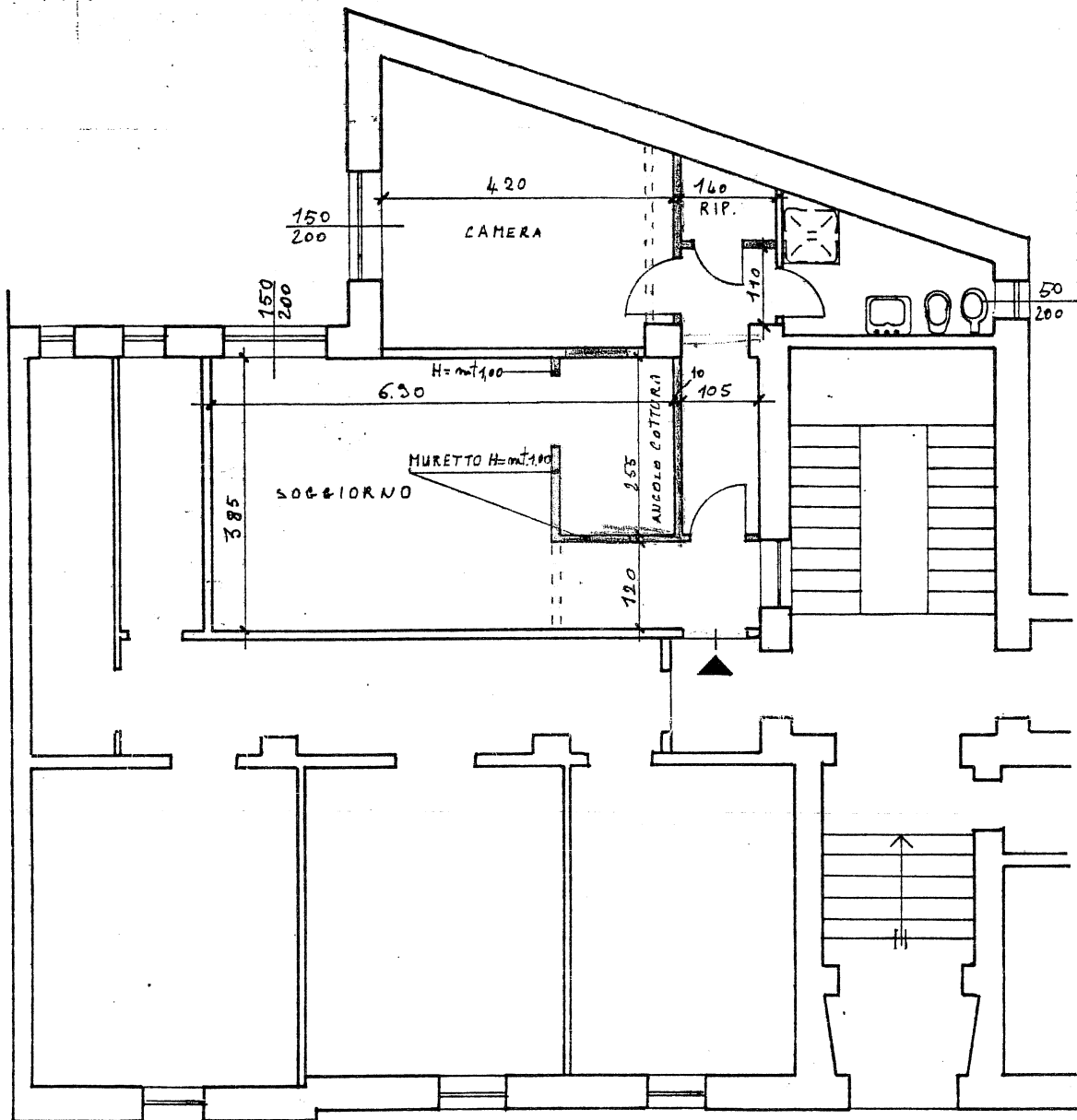
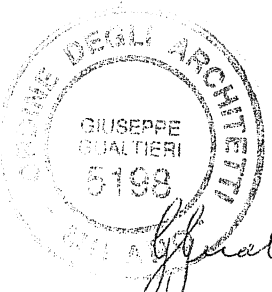


PIANTA DI PROGETTO



VIA ROSALES

COMUNE DI MILANO			
IMMOBILE	SITO IN VIA ROSALES 9		IL TECNICO arch. giuseppe gualtieri via NEGROLI 10A tel. 70107020
DICHIARANTE	L. FERRIGATO		
OPERE	MODIFICA E RIPRISTINO INTERNI art.26 L. 47 del 28/2/1985		
SCALA	1:100	DATA	



VIA ROSALES

CALCOLO SUPERFICIE RAPPORTI AREOILLUMINANTI

SOCEREND:

$$\text{SUP. LOCALE} = (600 \times 385) + (120 \times 115) = \text{mq. } 27.34$$

$$\text{SUP. ILLUMINANTE} = 150 \times 200 = \text{mq. } 3.00$$

$$\text{RAPP. ILLUMINANTE} = 27.34 / 3.00 = 9.11$$

40.25

CAMERA:

$$\text{SUP. LOCALE} = \frac{[(475 + 286) \times 300]}{2} + (40 \times 255) = \text{mq. } 14.34$$

$$\text{SUP. ILLUMINANTE} = 150 \times 200 = \text{mq. } 3.00$$

$$\text{RAPP. ILLUMINANTE} = 14.34 / 3.00 = 4.78$$

14.34

54.59