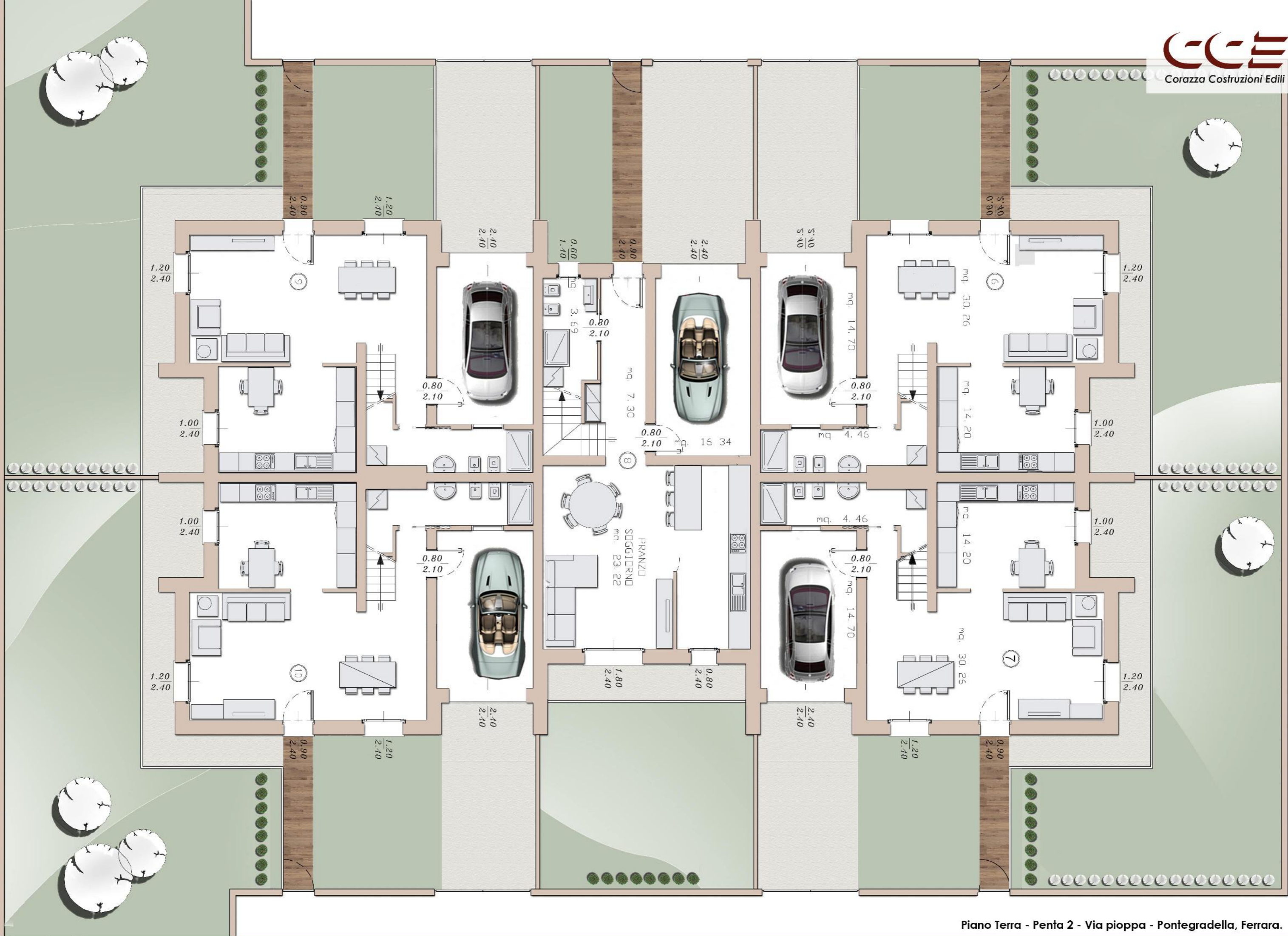
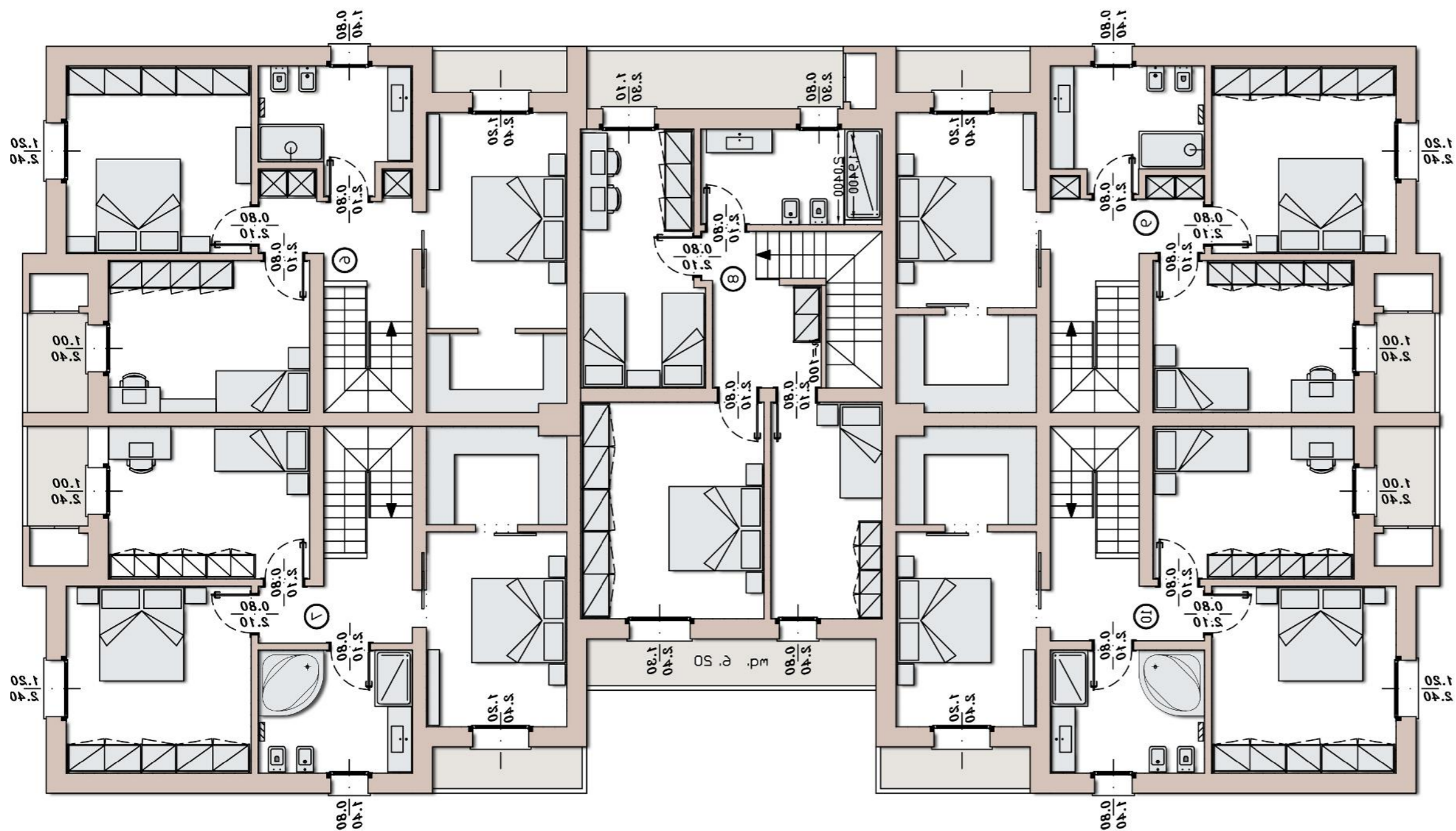




PENTAFAMILIARI - PONTEGRADELLA







VILLETTA 06

| | |
|--------------------------------------|------------------|
| Piano terra | 66.70 mq |
| Piano primo | 86.23 mq |
| Garage | 18.35 mq |
| Esterno di proprietà (130.09x10%) | 13.01 mq |
| Balconi (2.98+2.87x30%) | 1.76 mq |
| Stradello privato (207.68x10%/5) | 4.15 mq |
| Totale superficie commerciale | 186.06 mq |

VILLETTA 07

| | |
|--------------------------------------|------------------|
| Piano terra | 66.70 mq |
| Piano primo | 86.10 mq |
| Garage | 18.35 mq |
| Esterno di proprietà (130.09x10%) | 13.01 mq |
| Balconi (2.98+3.30x30%) | 1.88 mq |
| Stradello privato (212.55x10%/3) | 7.09 mq |
| Totale superficie commerciale | 193.13 mq |

VILLETTA 08

| | |
|--|------------------|
| Piano terra | 65.76 mq |
| Piano primo | 79.65 mq |
| Garage | 20.33 mq |
| Esterno di proprietà (42.17+47.50x10%) | 8.97 mq |
| Balconi (7.42+6.82x30%) | 4.27 mq |
| Stradello privato (207.68x10%/5) | 4.15 mq |
| Totale superficie commerciale | 178.98 mq |

VILLETTA 09

| | |
|--------------------------------------|------------------|
| Piano terra | 66.70 mq |
| Piano primo | 86.23 mq |
| Garage | 18.35 mq |
| Esterno di proprietà (158.79x10%) | 15.88 mq |
| Balconi (2.87+2.98x30%) | 1.76 mq |
| Stradello privato (207.68x10%/5) | 4.15 mq |
| Totale superficie commerciale | 188.91 mq |

VILLETTA 10

| | |
|--------------------------------------|------------------|
| Piano terra | 66.70 mq |
| Piano primo | 86.10 mq |
| Garage | 18.35 mq |
| Esterno di proprietà (157.26x10%) | 15.73 mq |
| Balconi (2.98+3.30x30%) | 1.88 mq |
| Stradello privato (212.55x10%/3) | 7.09 mq |
| Totale superficie commerciale | 195.85 mq |



