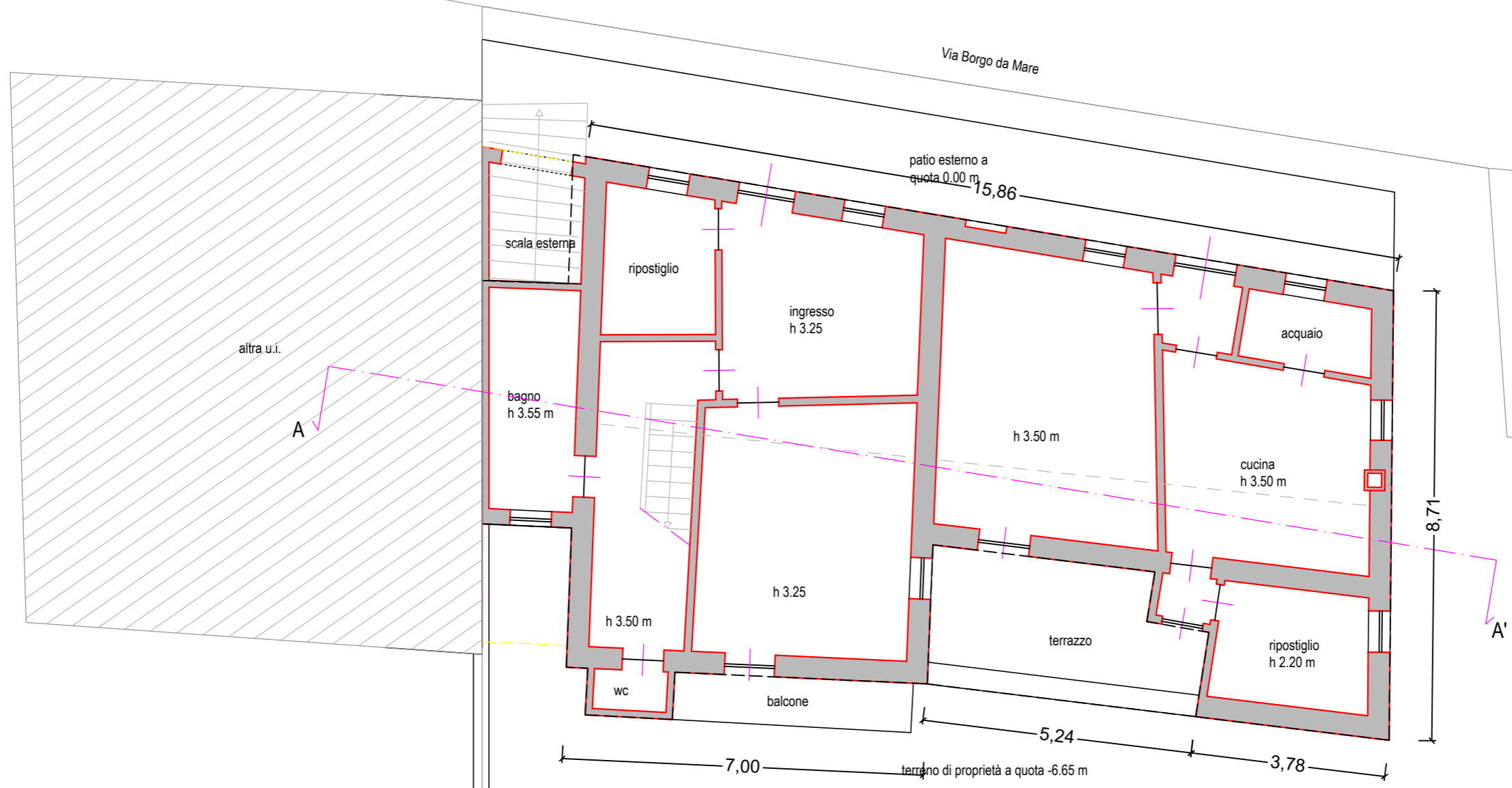


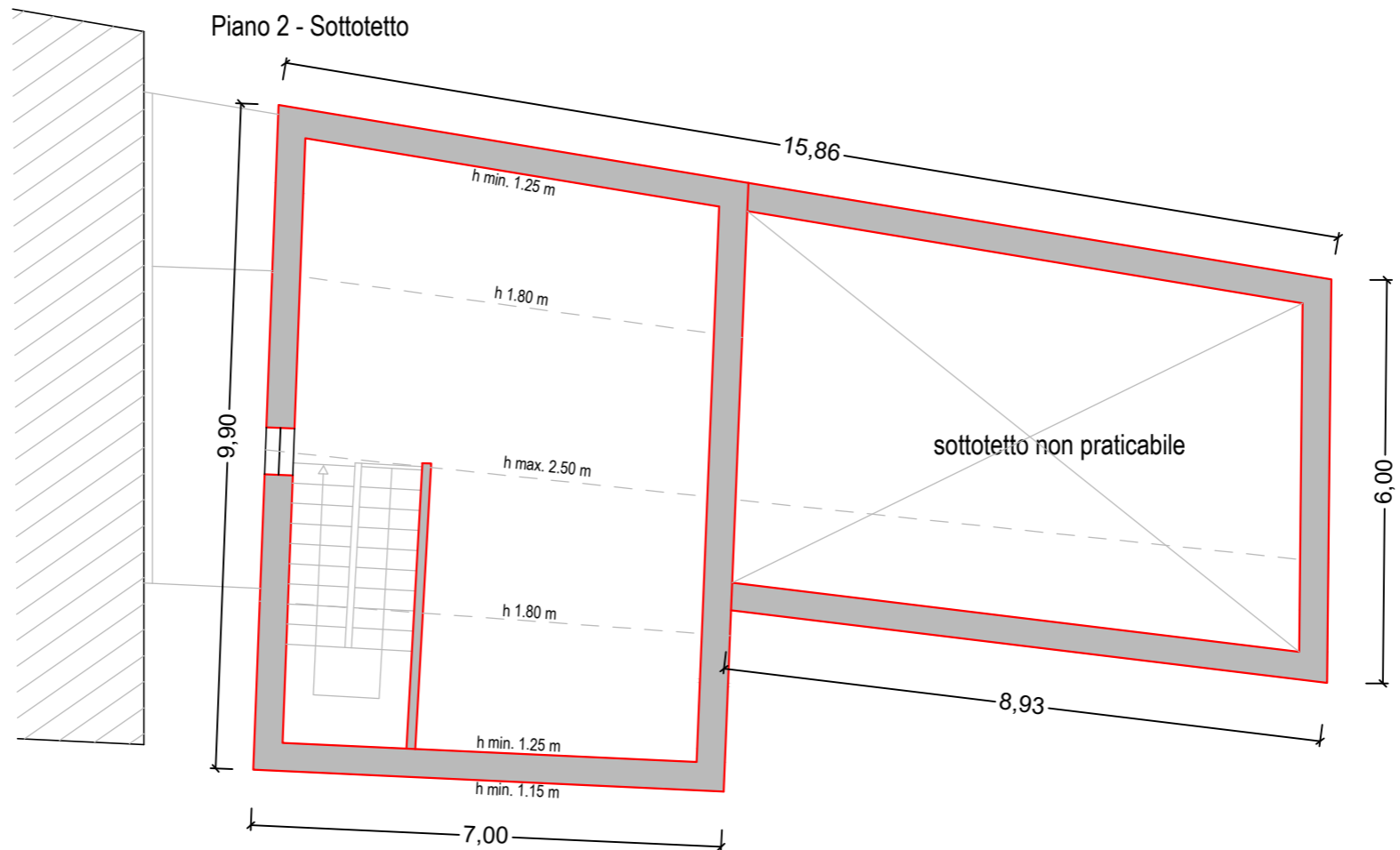
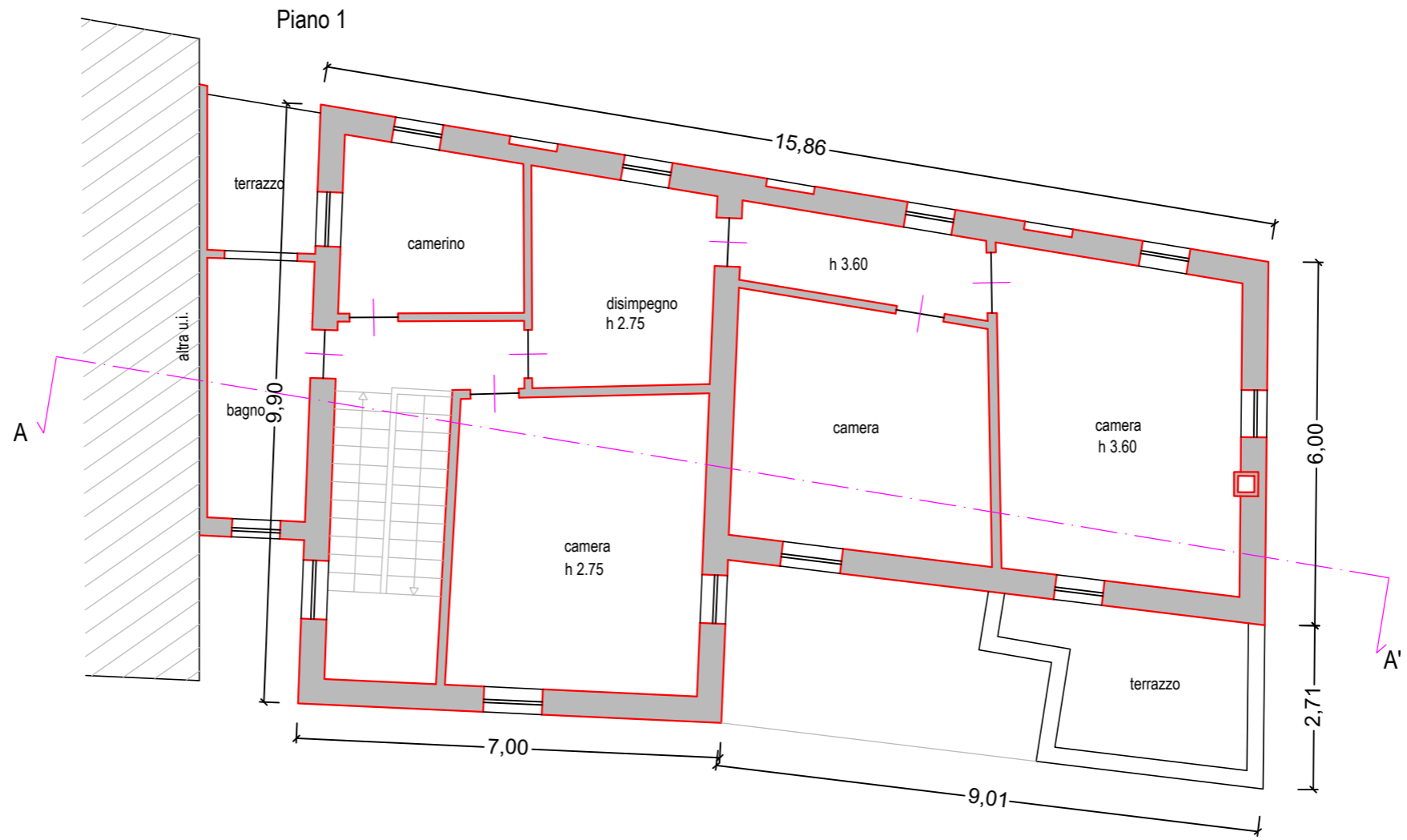
PIANO TERRA
H liv. strada= ± 0.00 m
Sup. 130.9 mq



Legenda muri
(Dim. mattone: 27x13 h 6.5 cm)

- Muro a 1 testa spess. = 13-16 cm
- Muro a 2 teste spess. = 27-30 cm
- Muro a 3 teste spess. = 41-43 cm
- Muro a 5 teste spess. = 70-73 cm





Legenda muri
(Dim. mattone: 27x13 h 6.5 cm)

- Muro a 1 testa spess. = 13-16 cm
- Muro a 2 teste spess. = 27-30 cm
- Muro a 3 teste spess. = 41-43 cm
- Muro a 5 teste spess. = 70-73 cm

Nord



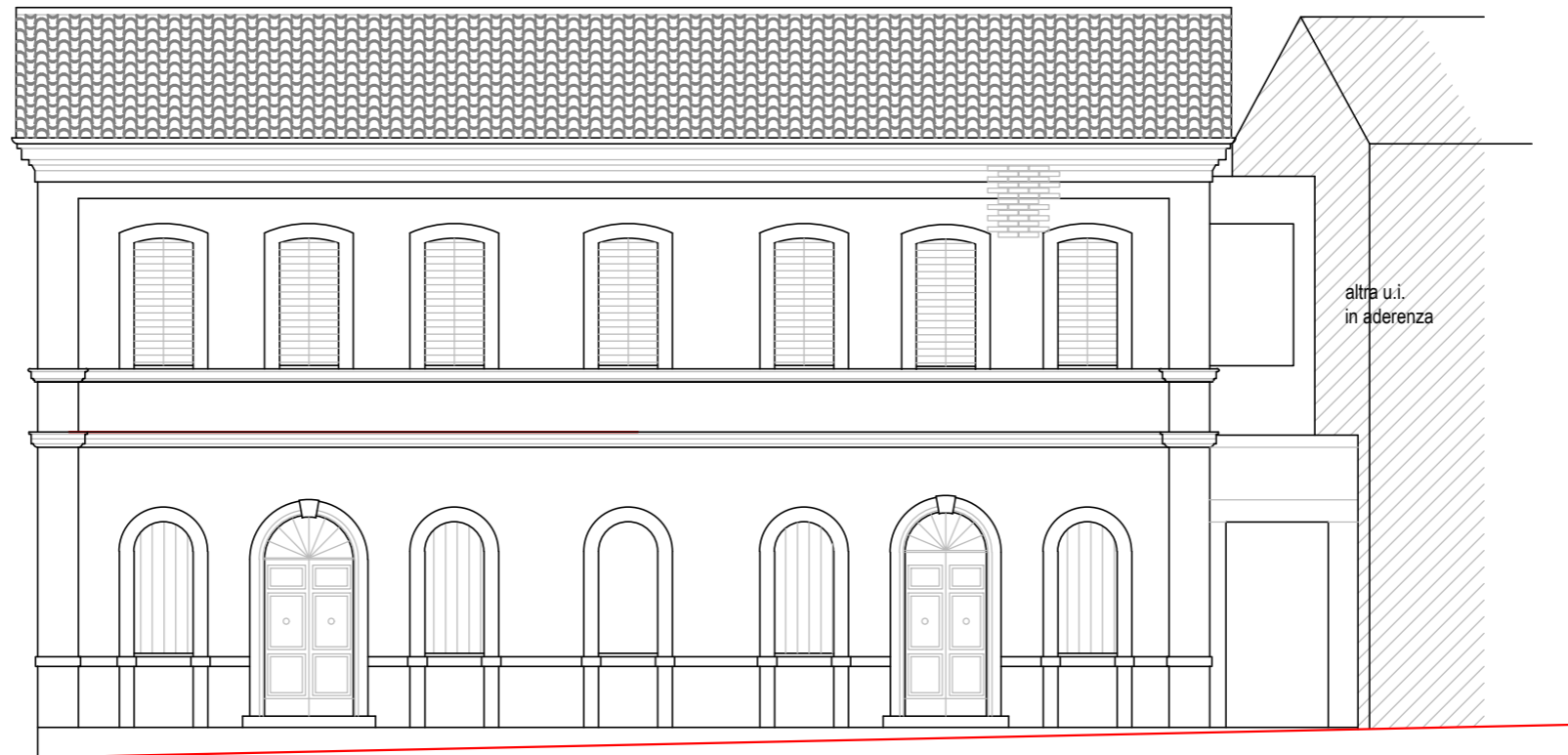


Legenda muri
 (Dim. mattone: 27x13 h 6.5 cm)

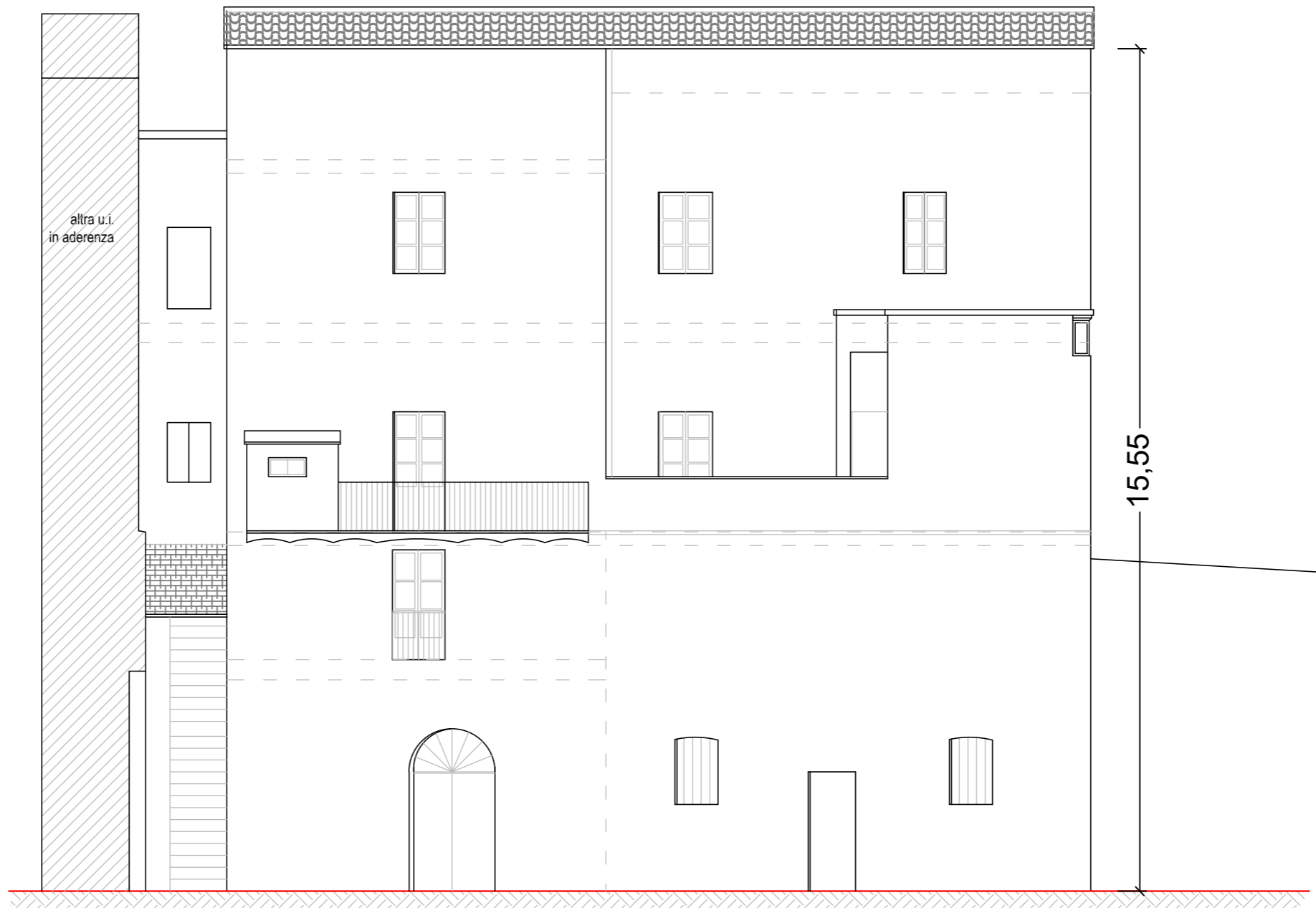
- Muro a 1 testa spess. = 13-16 cm
- Muro a 2 teste spess. = 27-30 cm
- Muro a 3 teste spess. = 41-43 cm
- Muro a 5 teste spess. = 70-73 cm



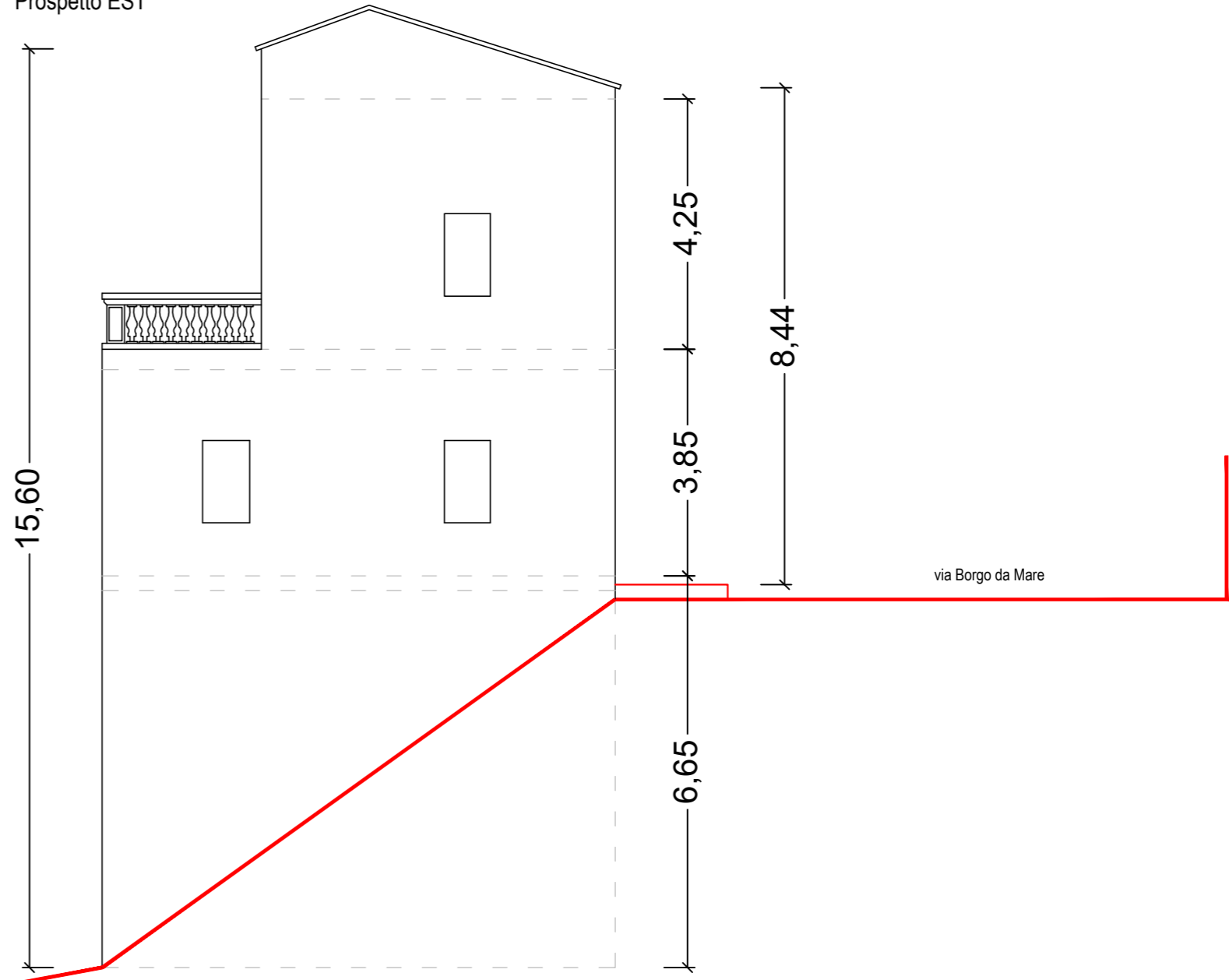
Prospetto NORD



PROSPETTO SUD



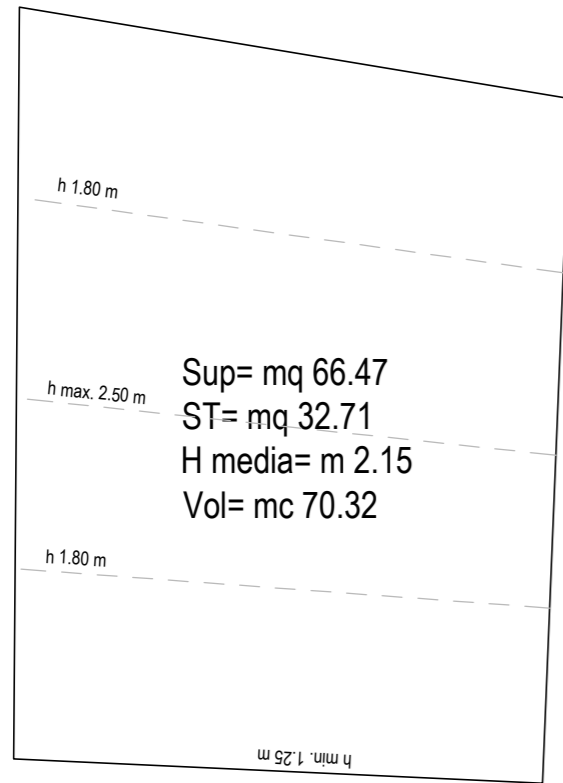
Prospetto EST



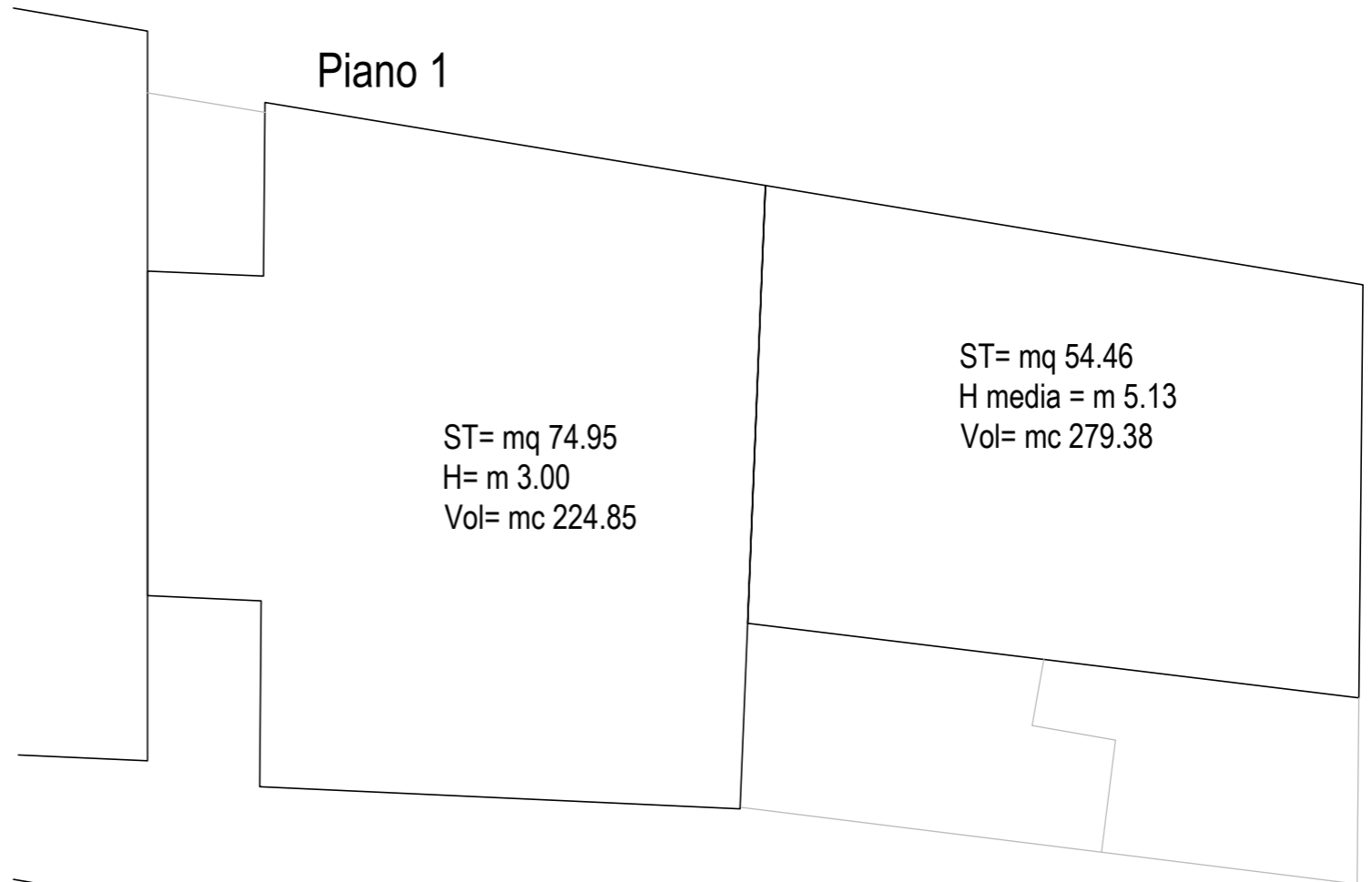
Dimensioni edificio: (n. 2 piani fuori terra+2 piani seminterrati)				
Piani	Sup.Totale (ST) (mq)	Altezza lorda (m)	Vol. Totale (V) (mc)	Sup. coperta (mq)
Piano terra	141.84	3.85	546.08	
Piano primo (1)	54.46	5.13	279.38	
Piano primo (2)	74.95	3.00	224.85	
Piano 2 -sottotet.	32.71	2.15	70.33	
Piano S1	66.42/2	2.38	158.08	
Piano S2 (1)	81.67/2	6.65	543.10	
Piano S2 (2)	63.30/2	4.27	270.29	
Tot.	515.35		2092.11	

Calcoli delle SUPERFICI TOTALI (ST), delle ALTEZZE LORDE (H) e dei VOLUMI TOTALI (Vol) sull'ESISTENTE

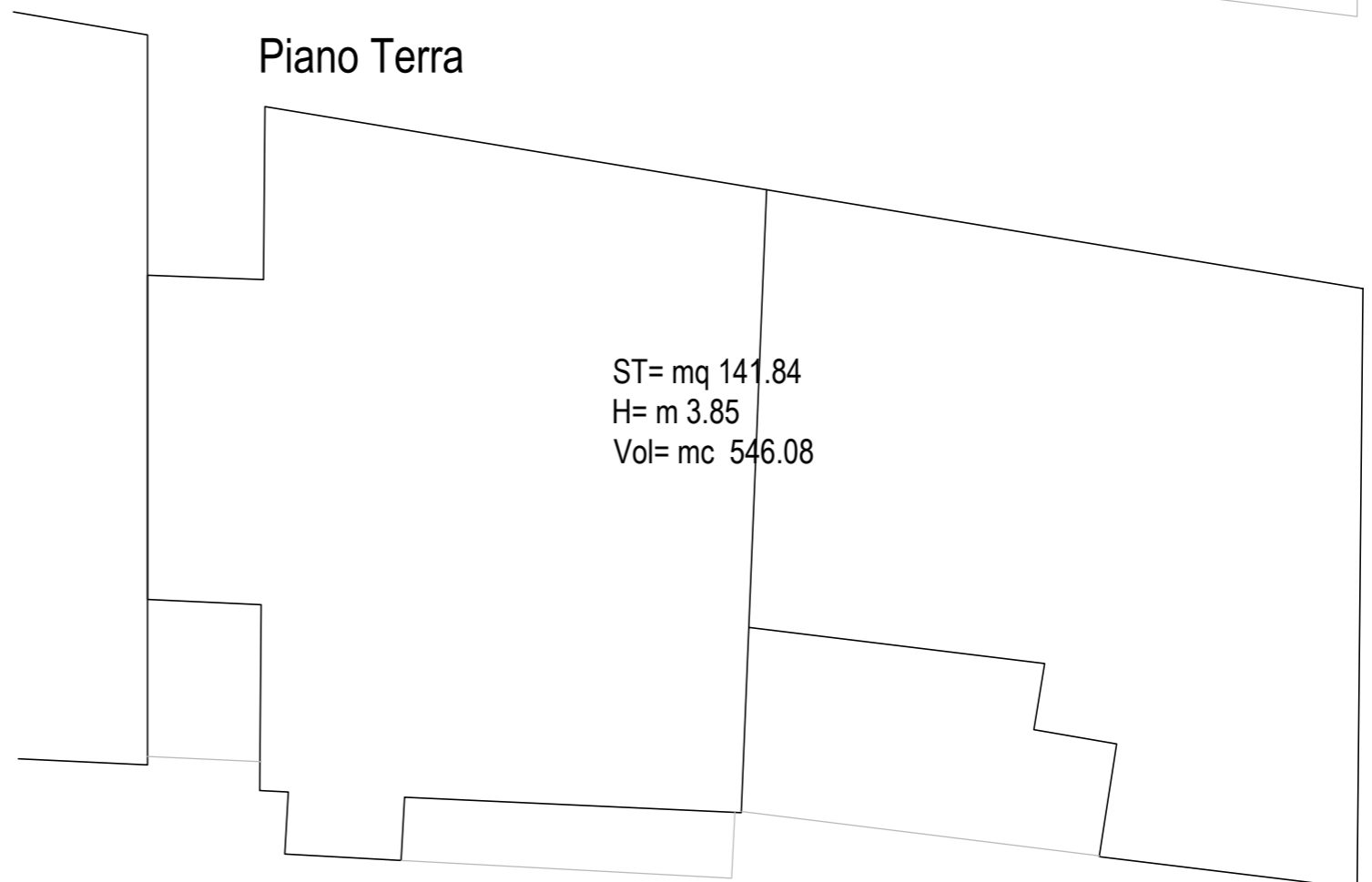
Piano 2 - Sottotetto



Piano 1



Piano Terra



Calcoli delle SUPERFICI TOTALI (ST), delle ALTEZZE LORDE (H) e dei
VOLUMI TOTALI (Vol) sull'ESISTENTE

Piano s2 - Seminterrato

ST= mq 63.30
H= m 4.27
Vol= mc 270.29

ST= mq 81.67
H= m 6.65
Vol= mc 543.10

Piano s1 - Seminterrato

ST= mq 66.42
H= m 2.38
Vol= mc 158.08

Superficie Coperta (SC)= mq 153.58