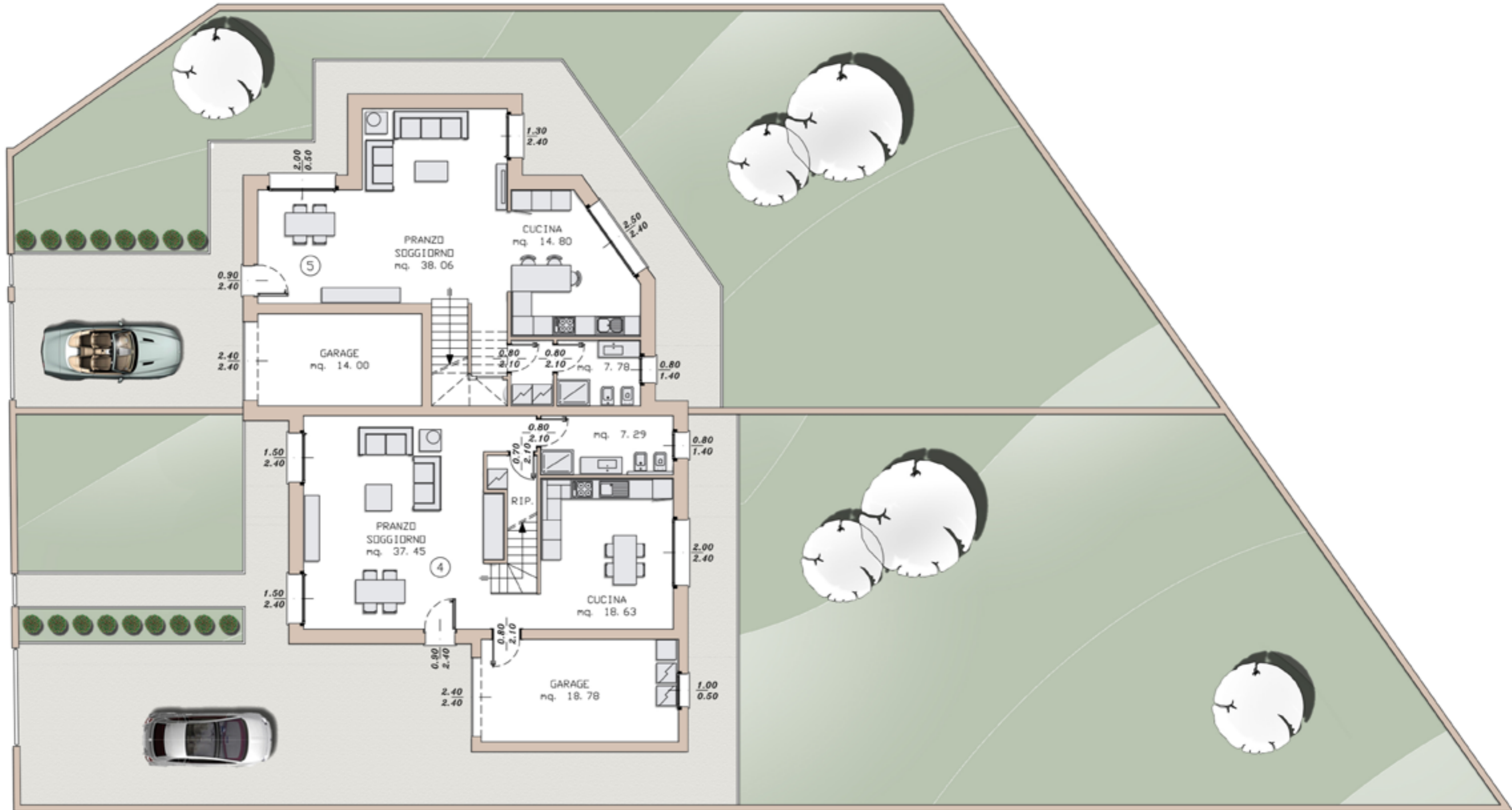


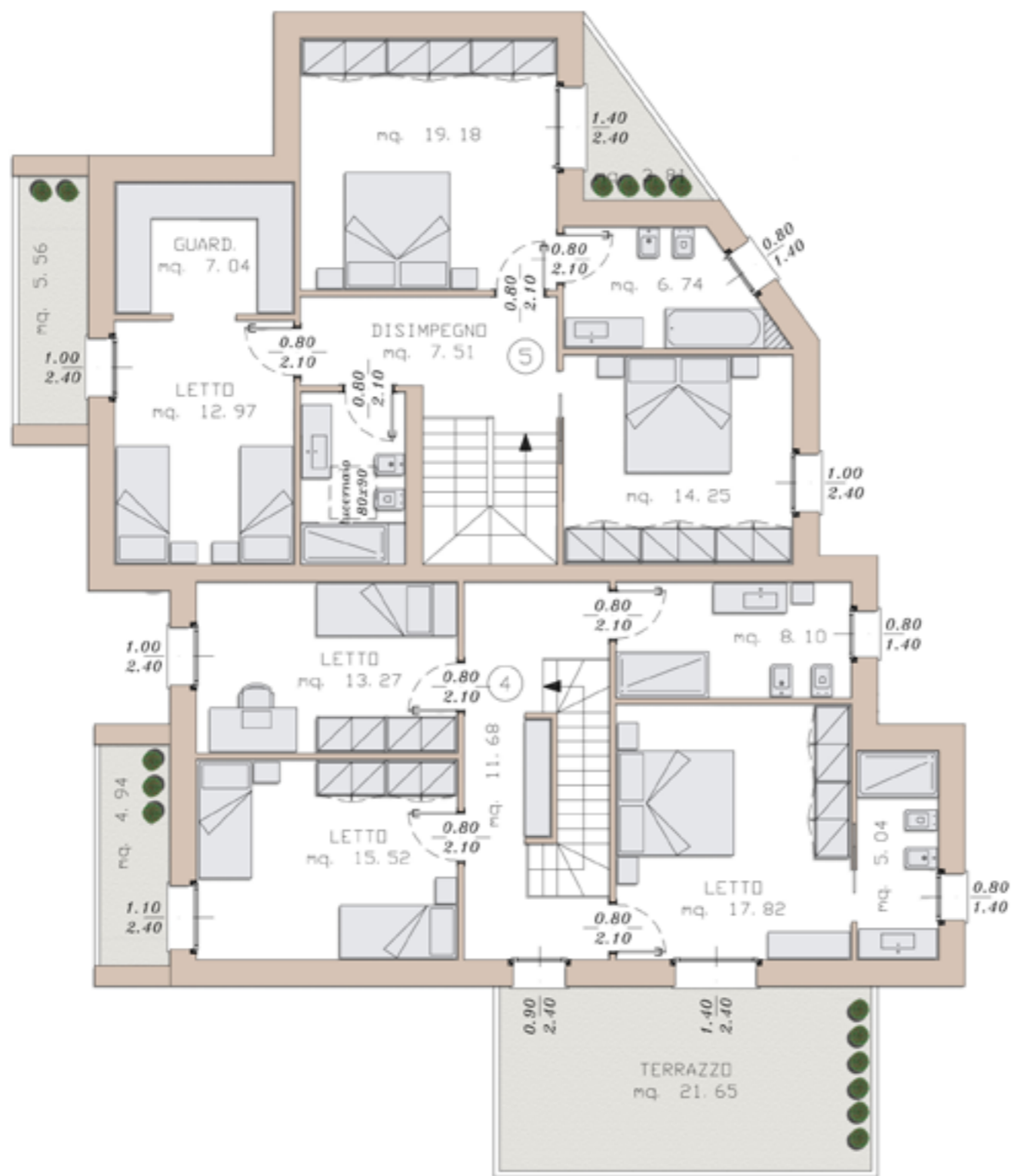


**VILLA BIFAMILIARE - VIA DELLE STATUE, FERRARA.**









VILLETTA N. 5	
PIANO TERRA	mq. 82.34
GARAGE	mq. 17.98
PIANO PRIMO	mq. 98.72
BALCONE (3.81x30%)	mq. 1.14
TERRAZZO (6.25x30%)	mq. 1.88
SCOPERTO ESCLUSIVO (289.33x10%)	mq. 28.93
STRADELLO PRIVATO di ACCESSO (277.90/3)x10%	mq. 9.26
TOTALE SUP. COMMERCIALE	mq. 240.25

VILLETTA N. 4	
PIANO TERRA	mq. 81.10
GARAGE	mq. 23.63
PIANO PRIMO	mq. 90.59
BALCONE (6.50x30%)	mq. 1.95
TERRAZZO (21.65x30%)	mq. 6.50
SCOPERTO ESCLUSIVO (395.75x10%)	mq. 39.58
STRADELLO PRIVATO di ACCESSO (277.90/3)x10%	mq. 9.26
TOTALE SUP. COMMERCIALE	mq. 252.61



