

Tiepolo

LIVING

UN PROGETTO **RESIDENZIALE**
DI **RIQUALIFICAZIONE** URBANA
SOSTENIBILE
TECNOLOGICO
NEL **CENTRO** DI USMATE VELATE



IMPRESA

2V Costruzioni

Tiepolo
LIVING

PROGETTO

Architetto Fabio Spadone

COMMERCIALIZZAZIONE

PUNTOCASA USMATE

Via Roma, 28, 20865 Usmate Velate MB

usmate@puntocasa.net

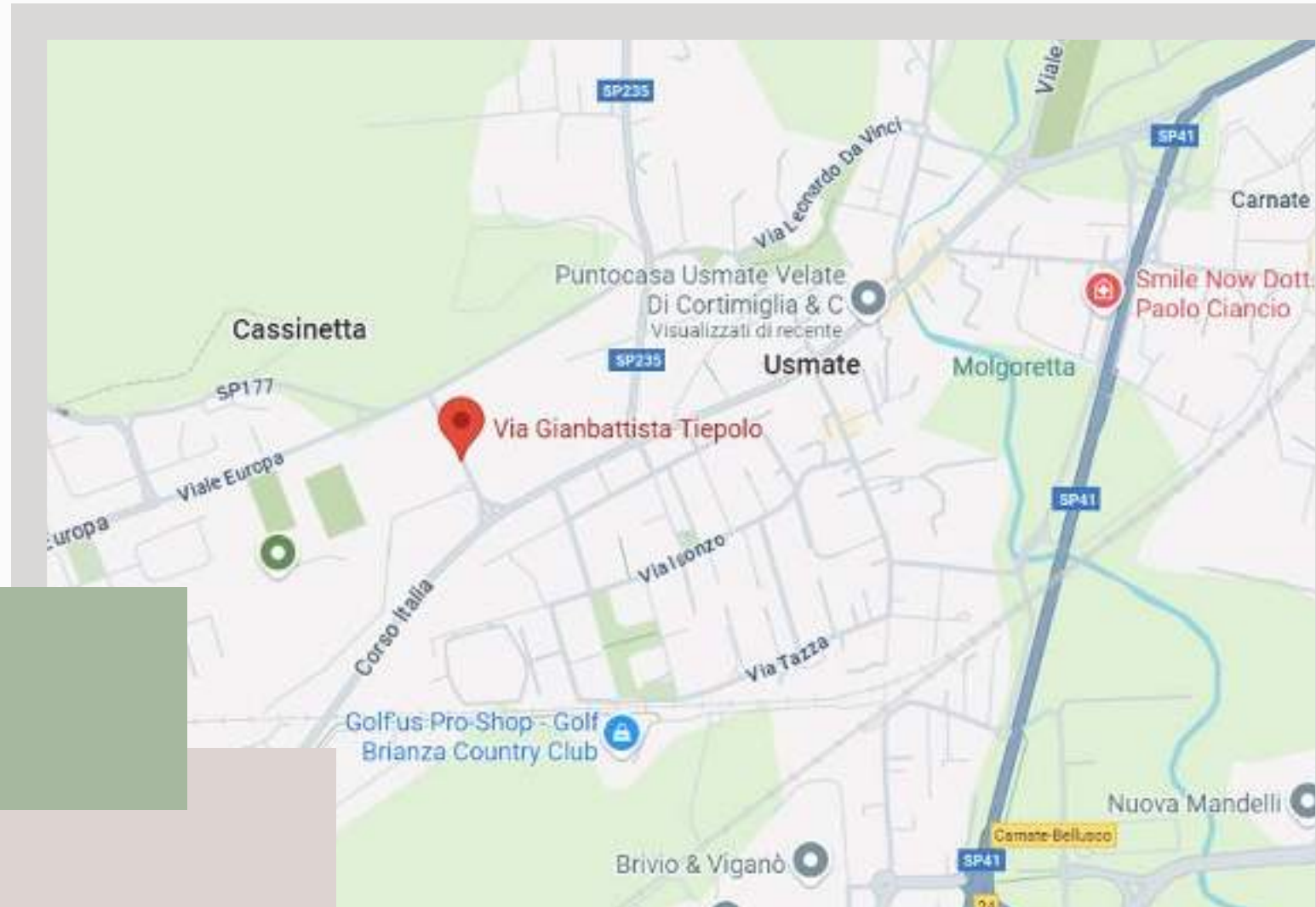
www.puntocasa.net



POSIZIONE

UNA CASA IN CENTRO

Tiepolo Living sorgerà nel cuore di Usmate, tra la via Tiepolo e Corso Italia. Vicina a tutti i servizi e



COLLEGAMENTI

La posizione strategica di Usmate rende la connessione con le principali città semplice e veloce.

RIQUALIFICAZIONE URBANA

Un progetto di riqualificazione urbana che valorizza l'area con architetture moderne, spazi verdi e soluzioni abitative progettate per garantire comfort, sostenibilità e tecnologia.

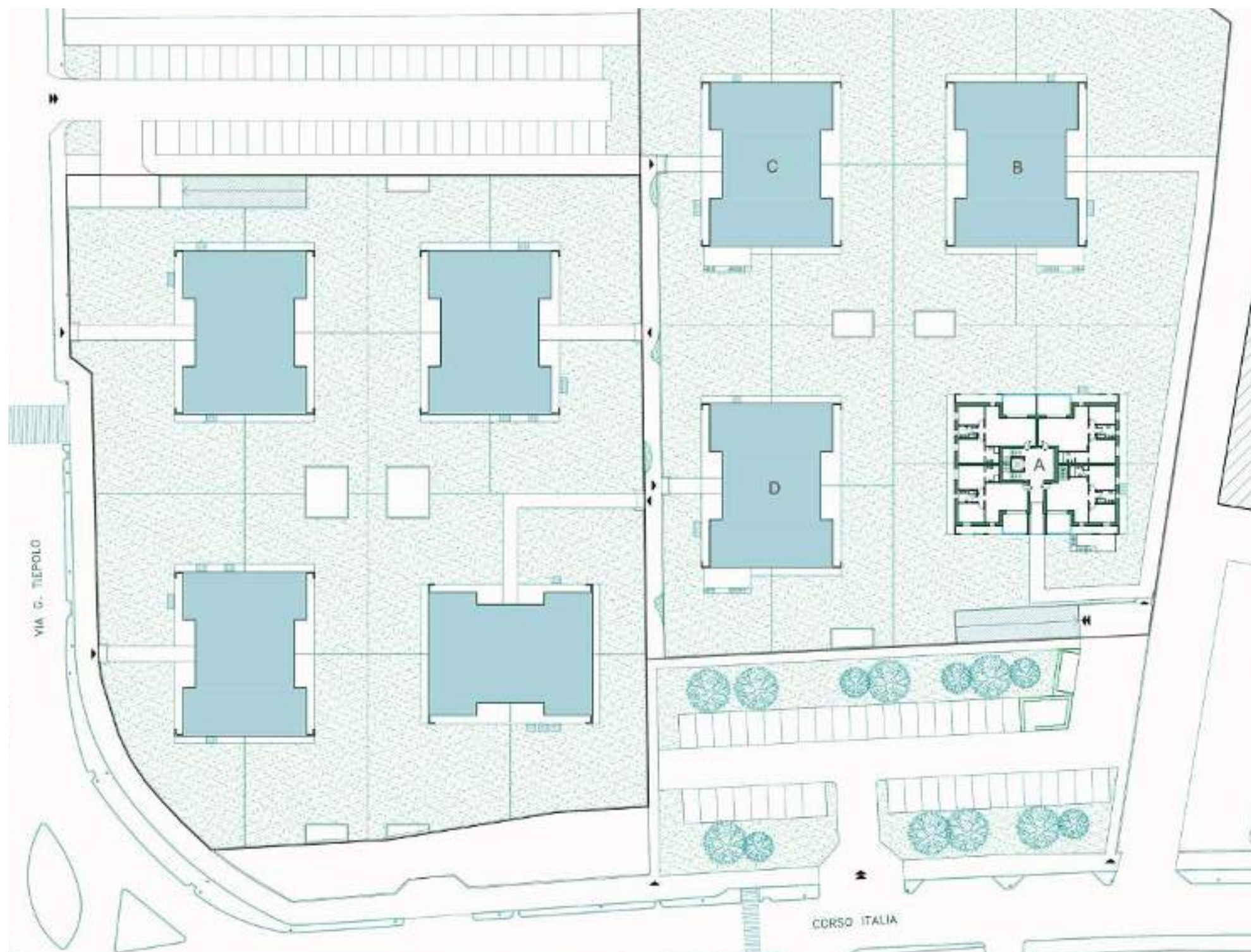


Tiepolo

LIVING

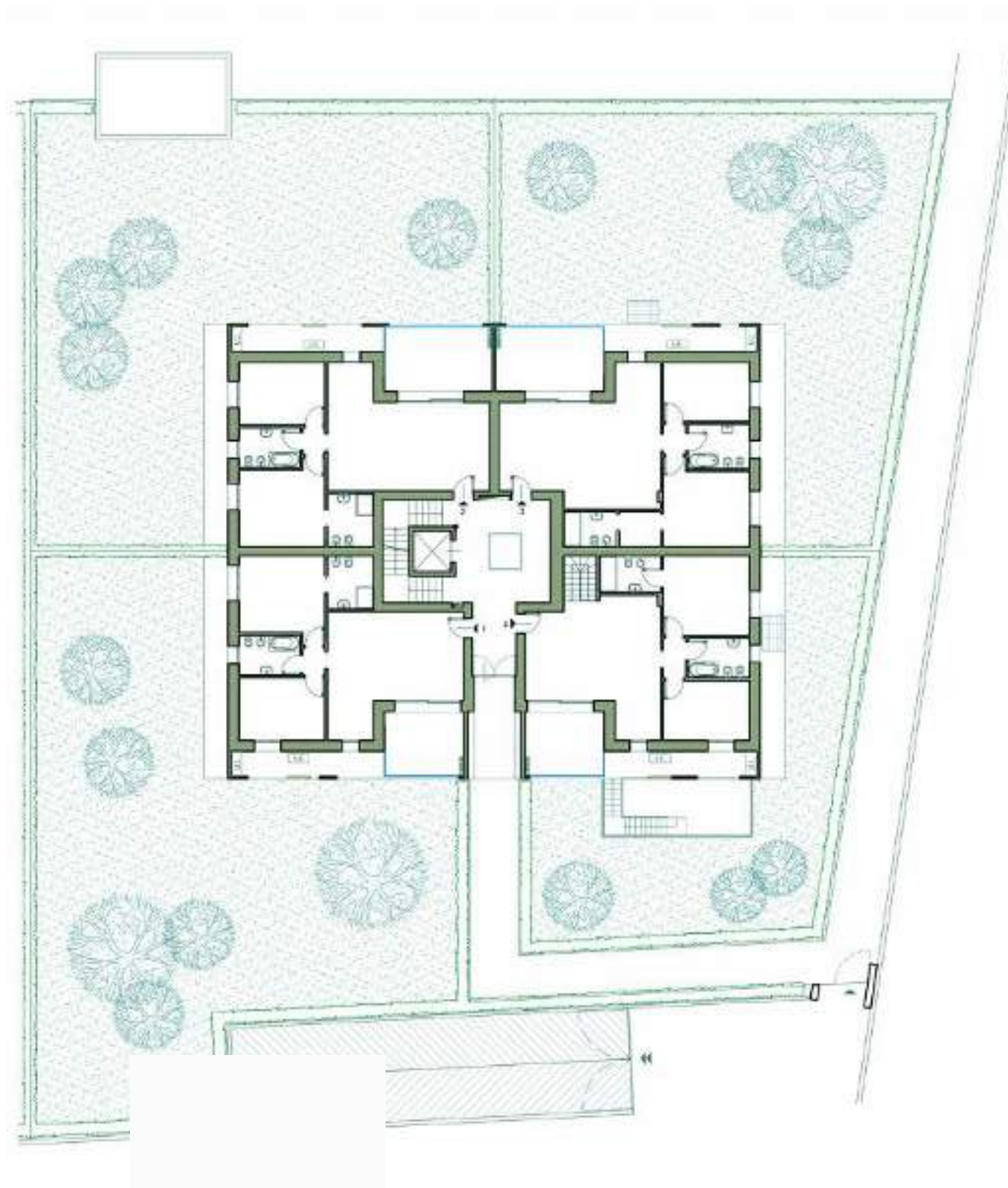


PLANIMETRIA
GENERALE

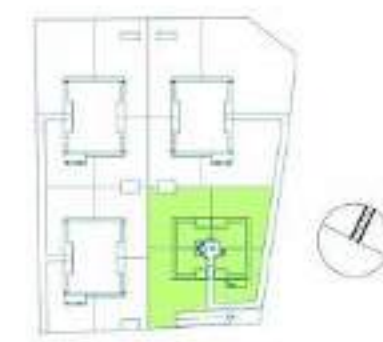




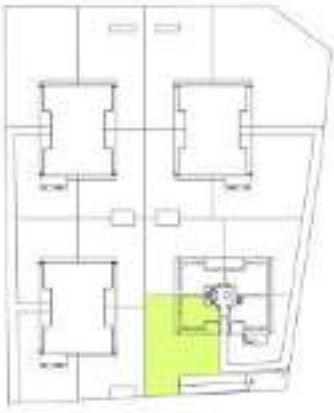
PIANO
INTERRATO



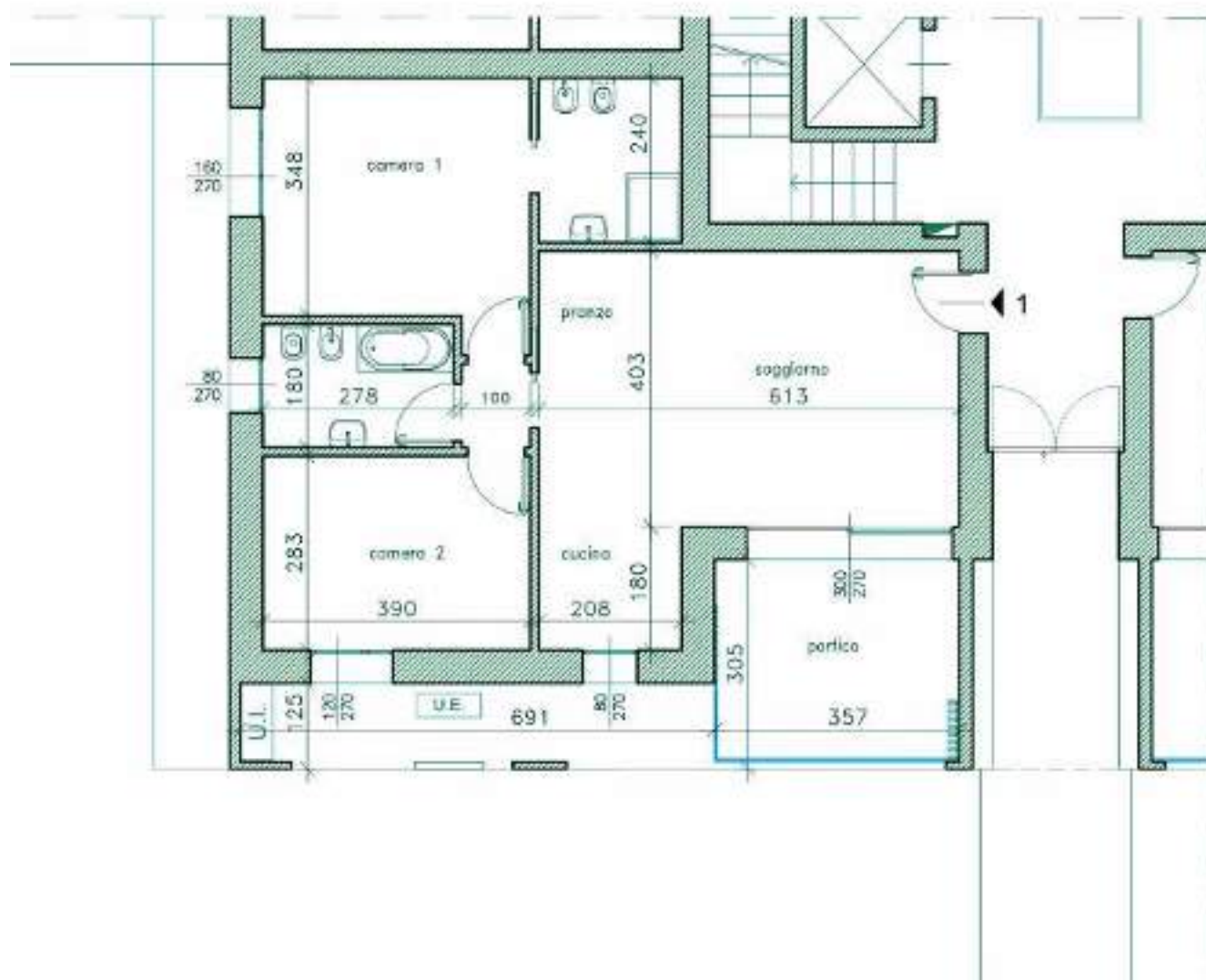
**PIANO TERRA
EDIFICIO A**



ALLOGGIO A1

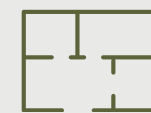


planimetria generale dell'abitazione



planimetria quotata dell'abitazione

ALLOGGIO A1



Superficie
Commerciale
108,72 mq



Superficie
Giardino
311 mq

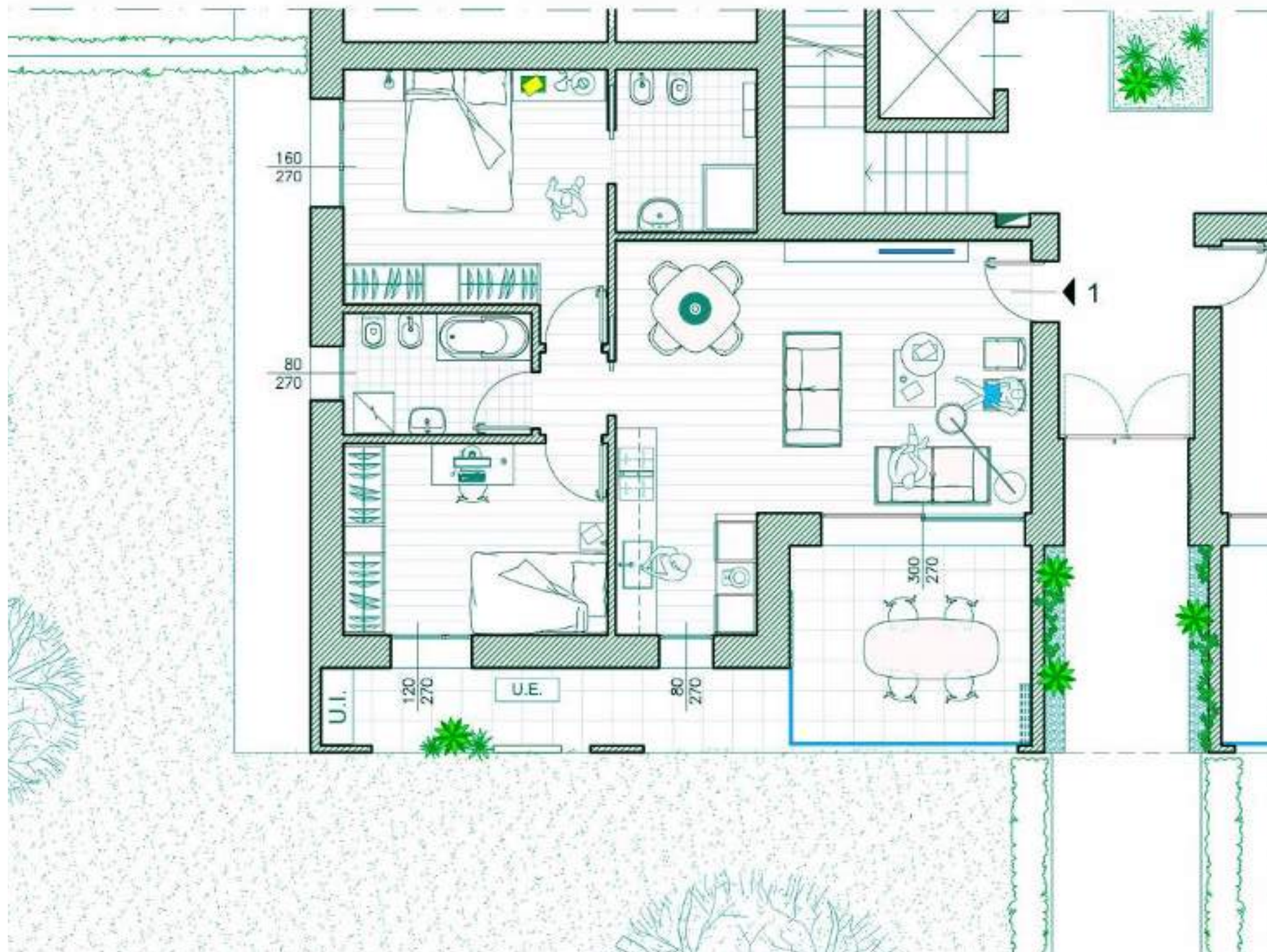


Superficie
Porticati
19,51 mq



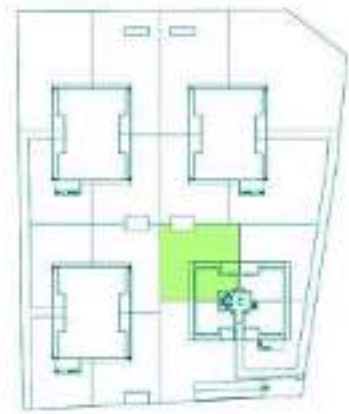
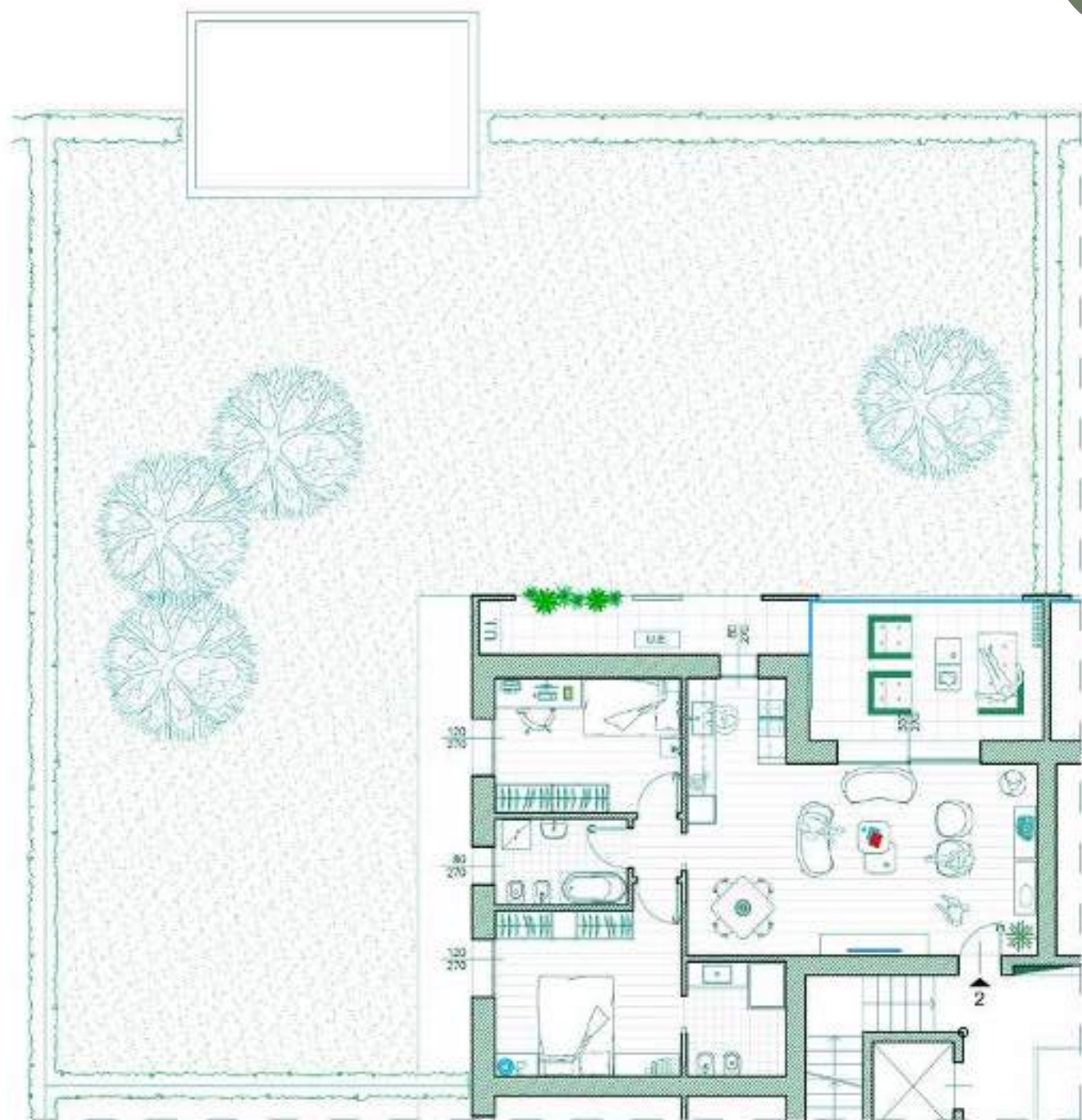
Piano
terra





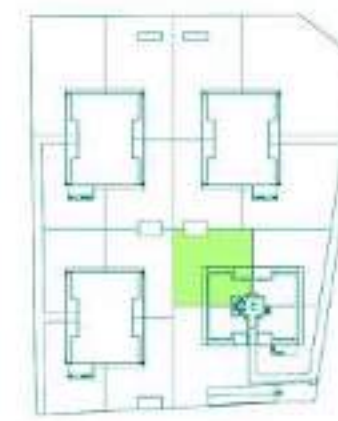
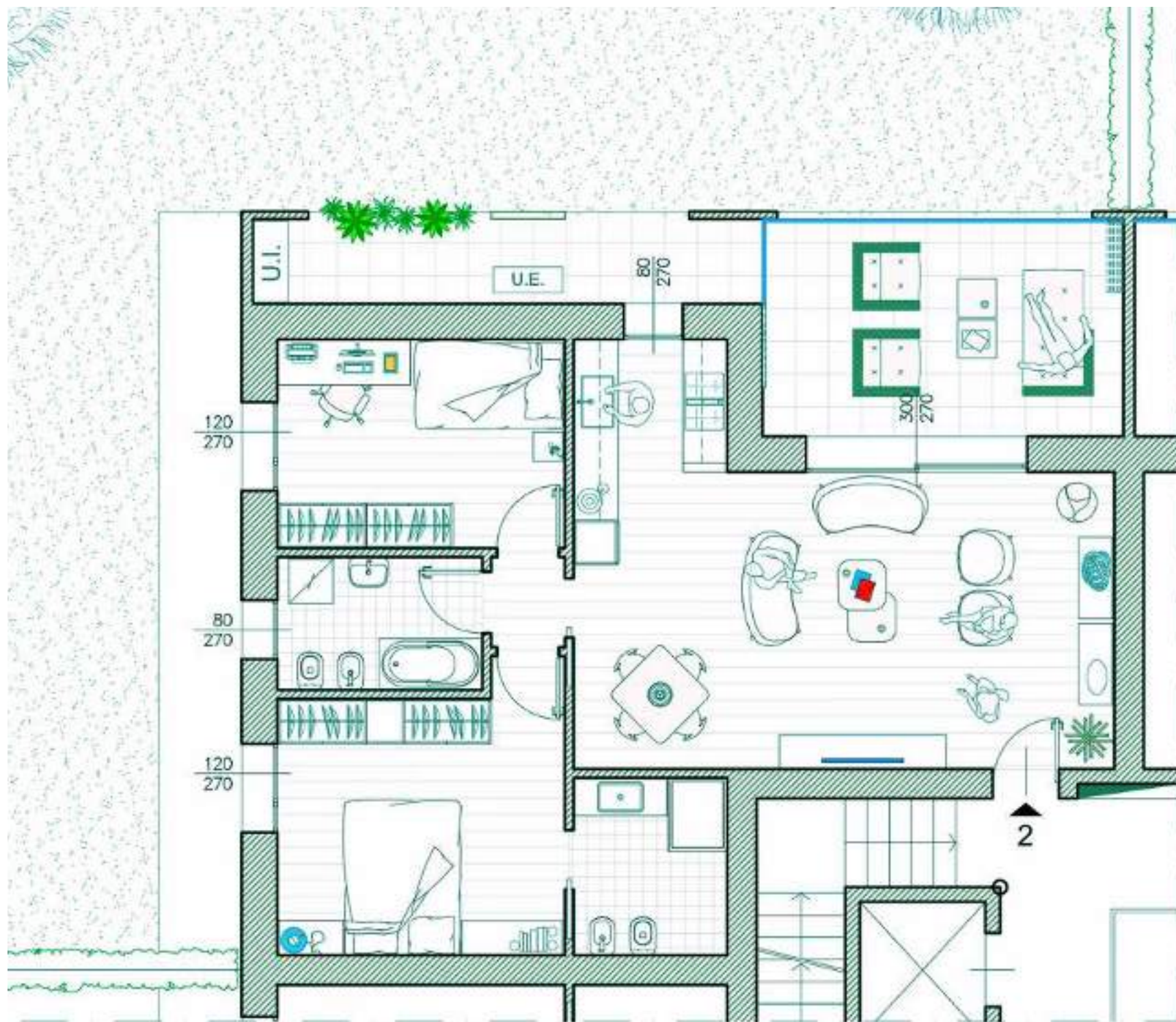
planimetria arredata
dell'abitazione

ALLOGGIO A2



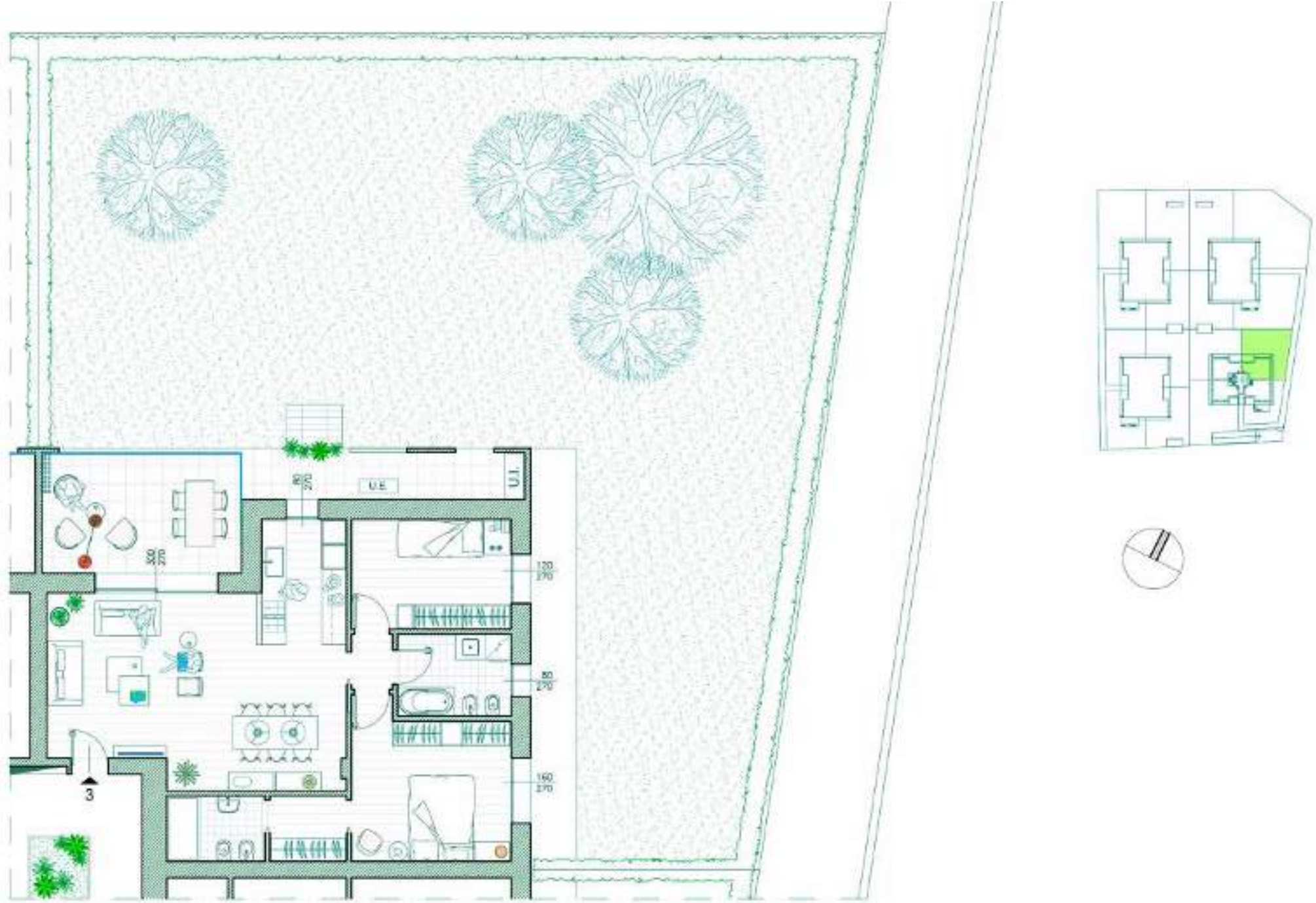
planimetria generale dell'abitazione

ALLOGGIO A2

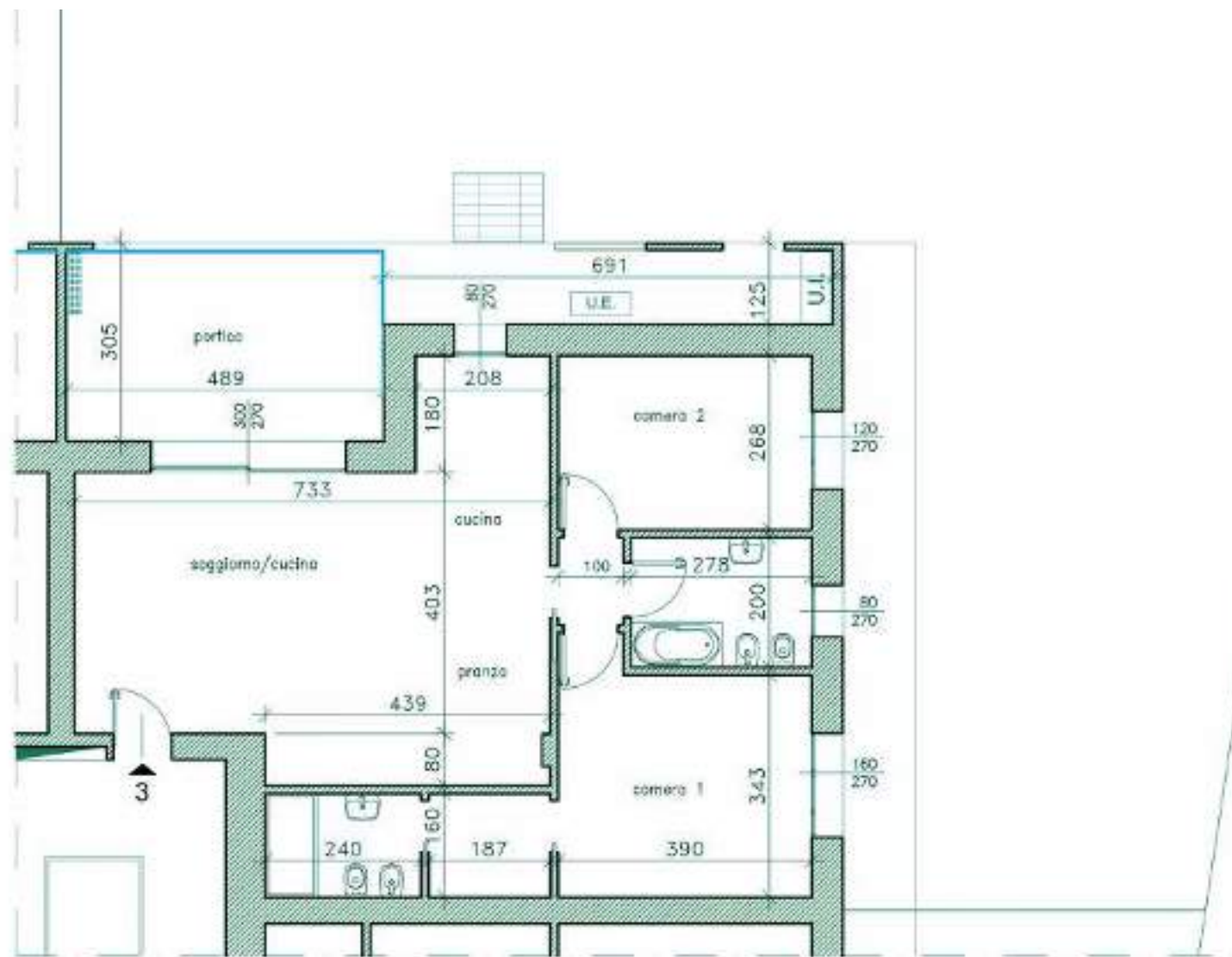


planimetria arredata
dell'abitazione

ALLOGGIO A3



planimetria generale dell'abitazione



planimetria quotata dell'abitazione

ALLOGGIO A3



Superficie
Appartamento
122,51 mq



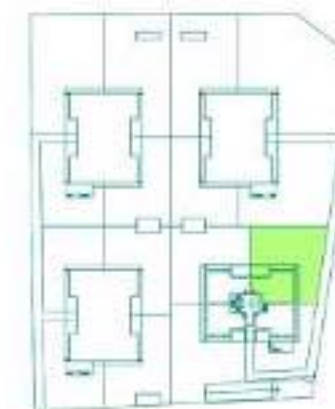
Superficie
Giardino
267 mq

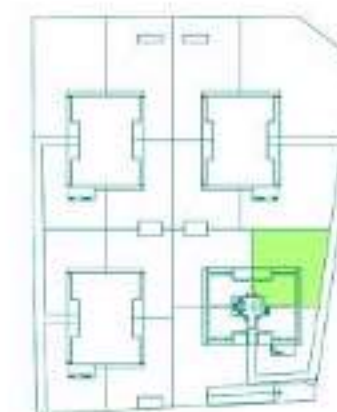


Superficie
Porticati
19,51 mq



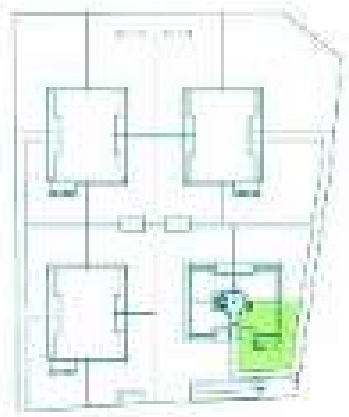
Piano
terra



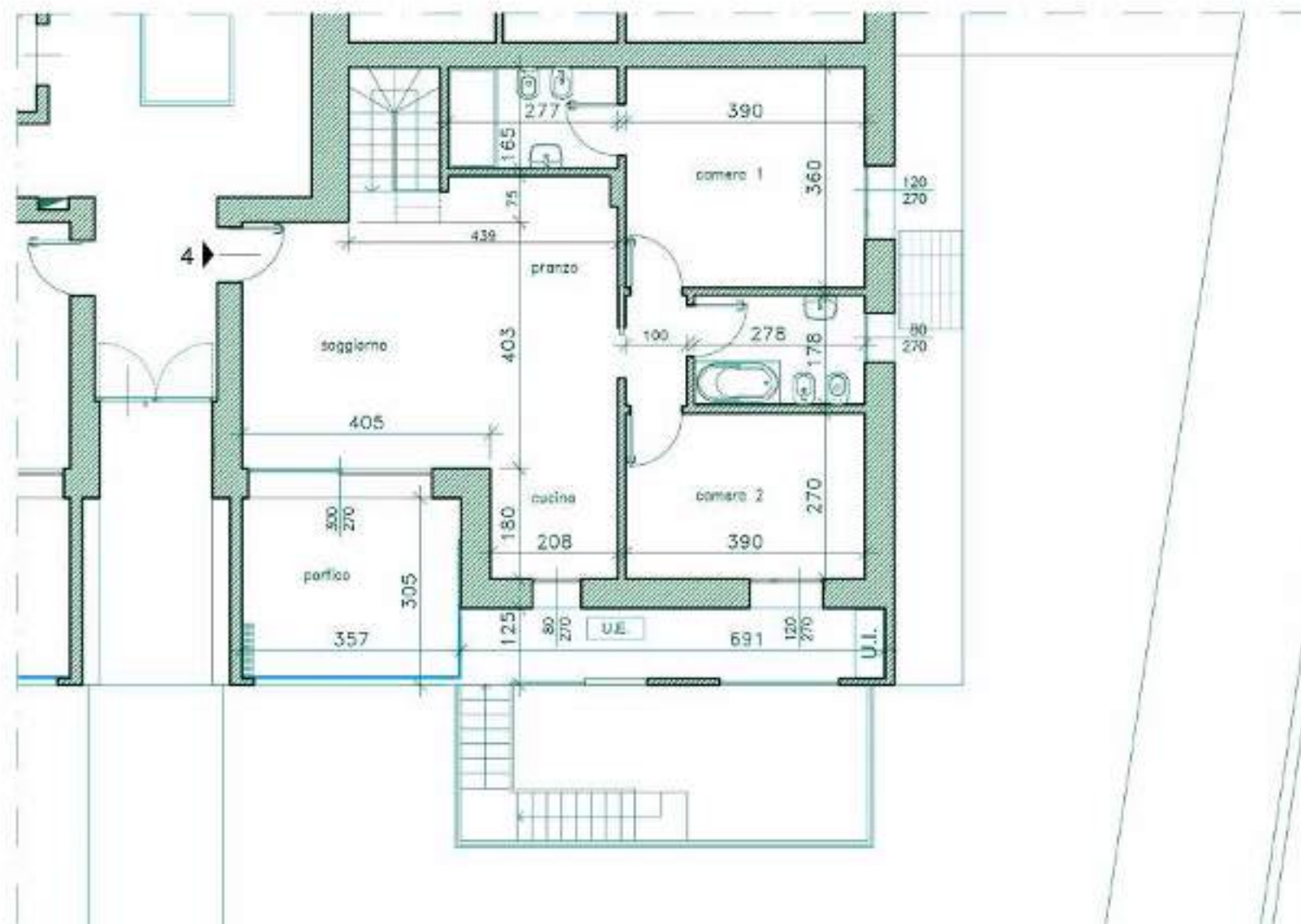


planimetria arredata
dell'abitazione

ALLOGGIO A4



planimetria generale dell'abitazione



planimetria quotata dell'abitazione

ALLOGGIO A4



Superficie
Commerciale
150,71 mq



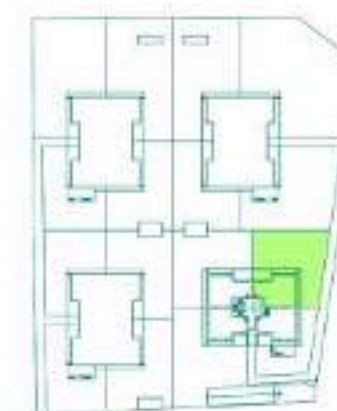
Superficie
Giardino
141,86 mq

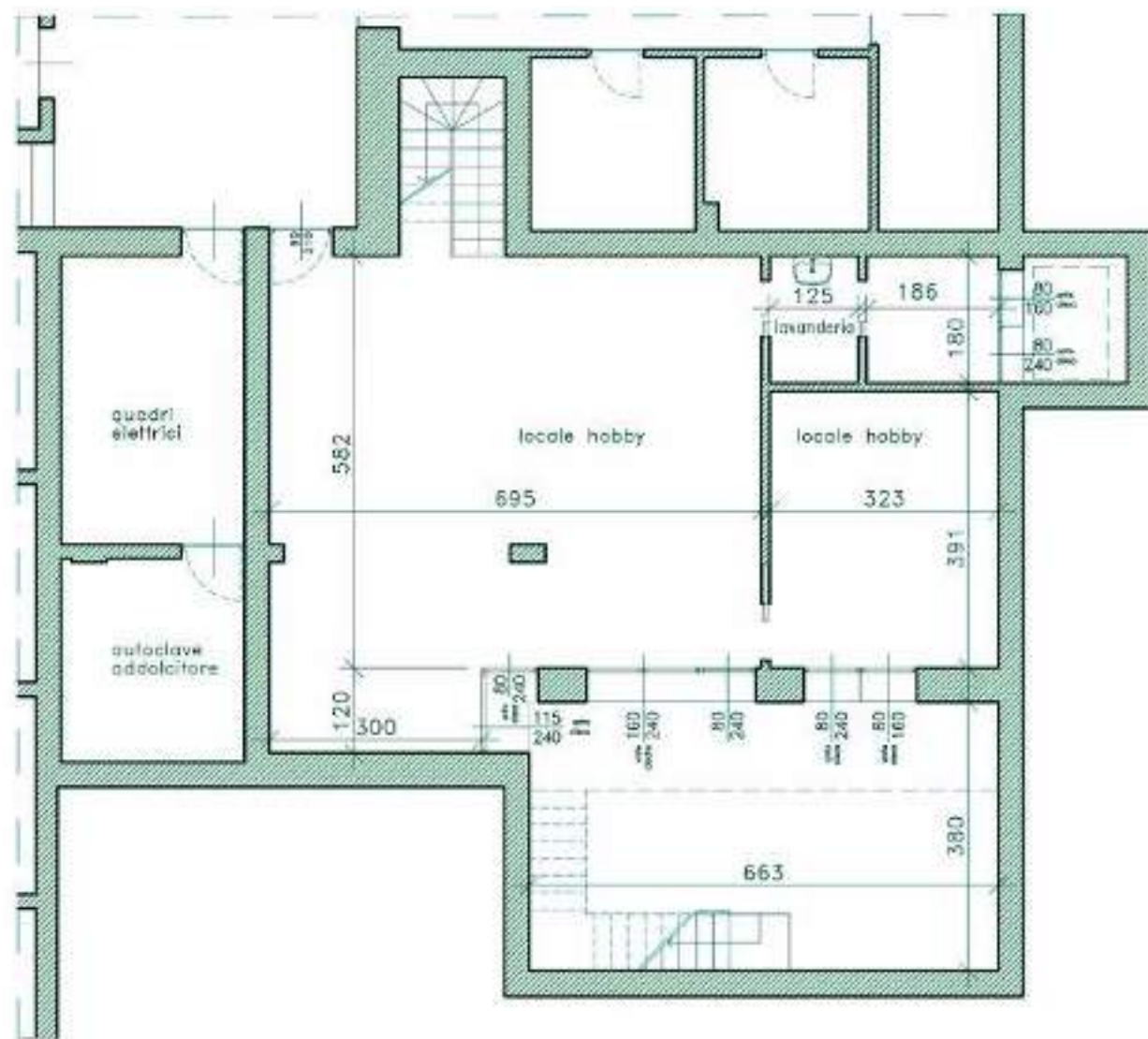


Superficie
Porticati
19,51 mq

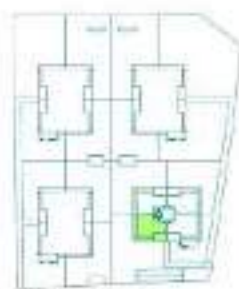


Piano
terra





INTERRATO A4



planimetrie arredata
e quotata dell'abitazione



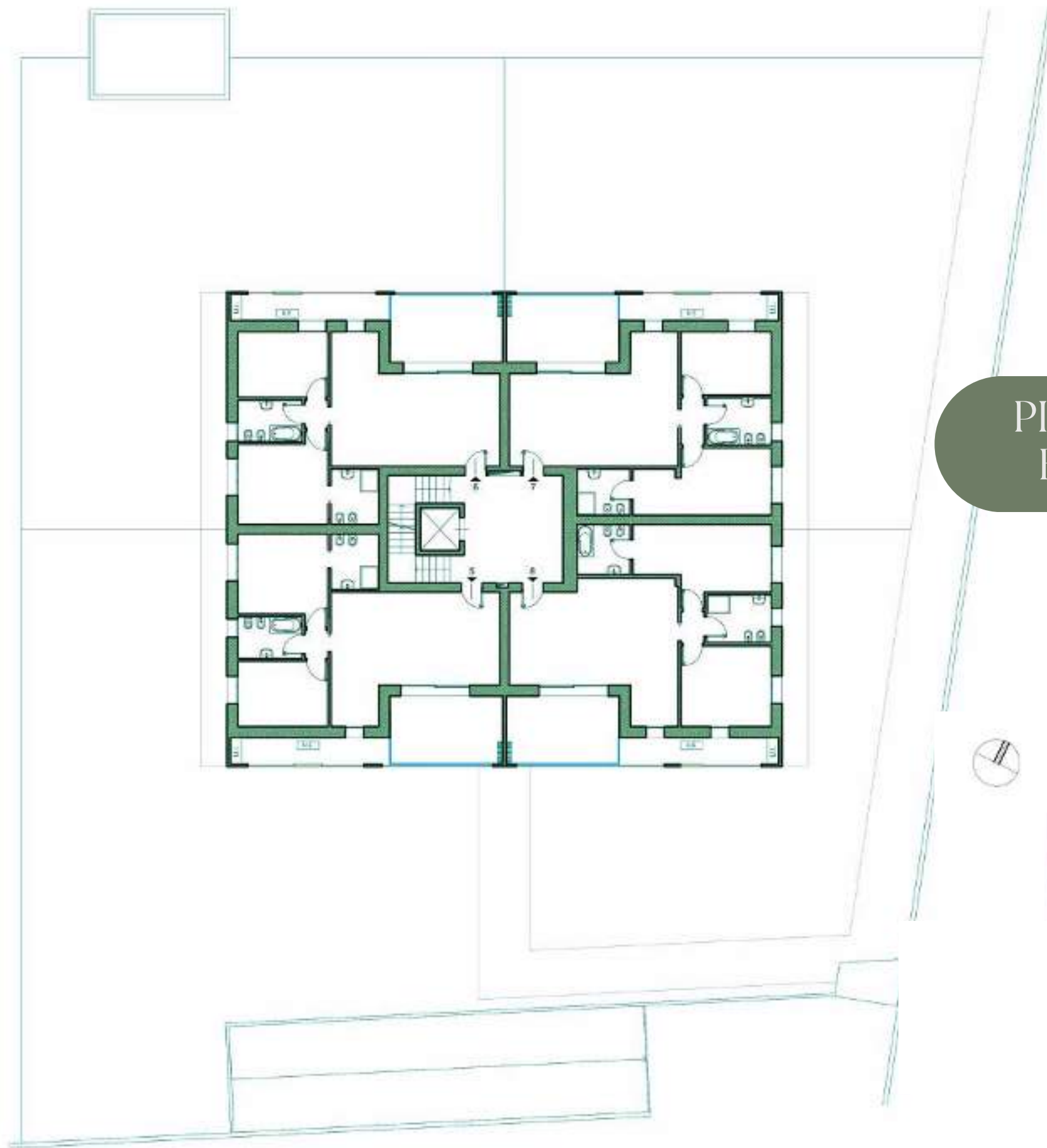
Superficie
Commerciale
80,25 mq



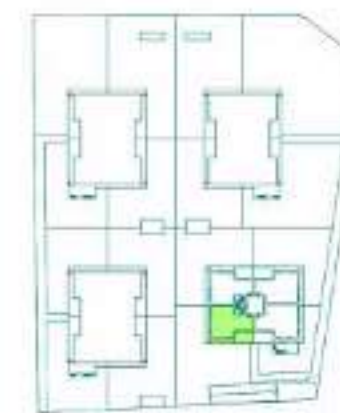
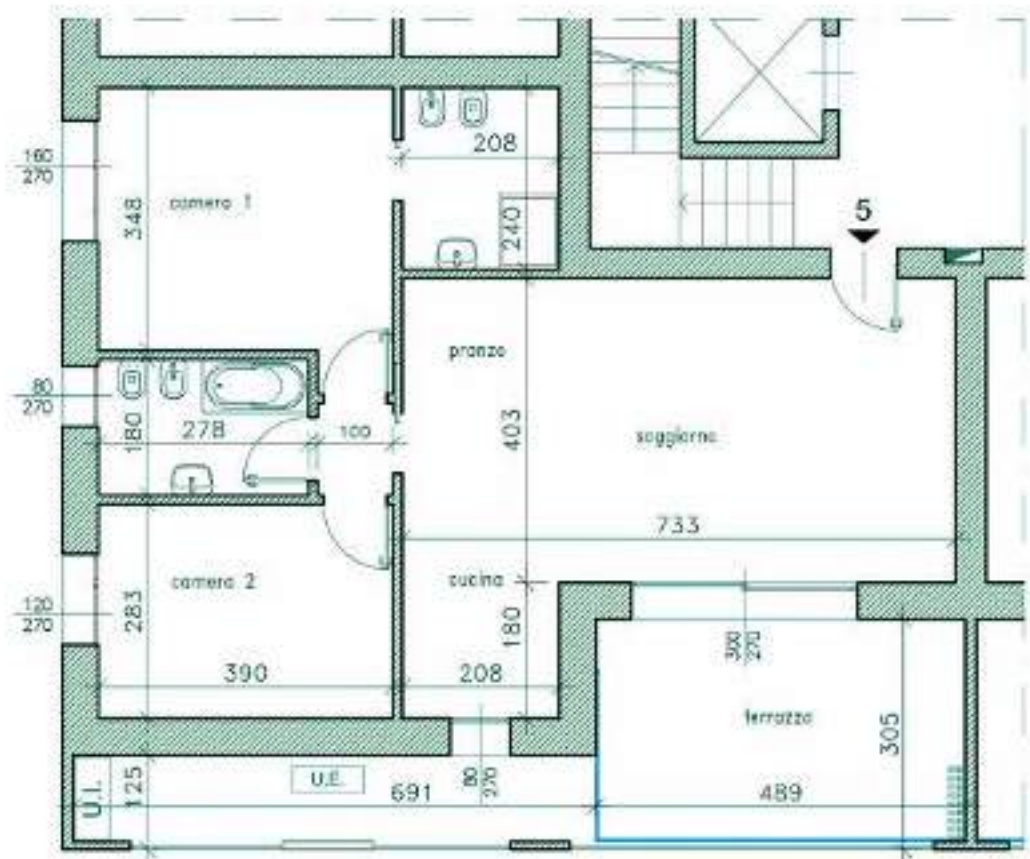
Superficie
cavedio
25,19 mq



Piano
interrato



PIANO PRIMO
EDIFICIO A



ALLOGGIO A5



Superficie
Commerciale
105,38 mq

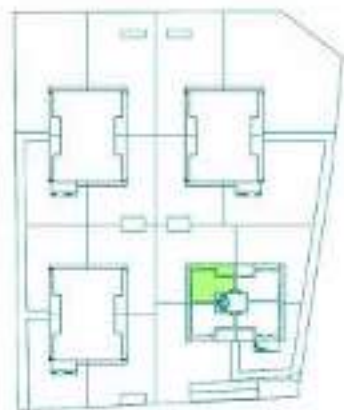
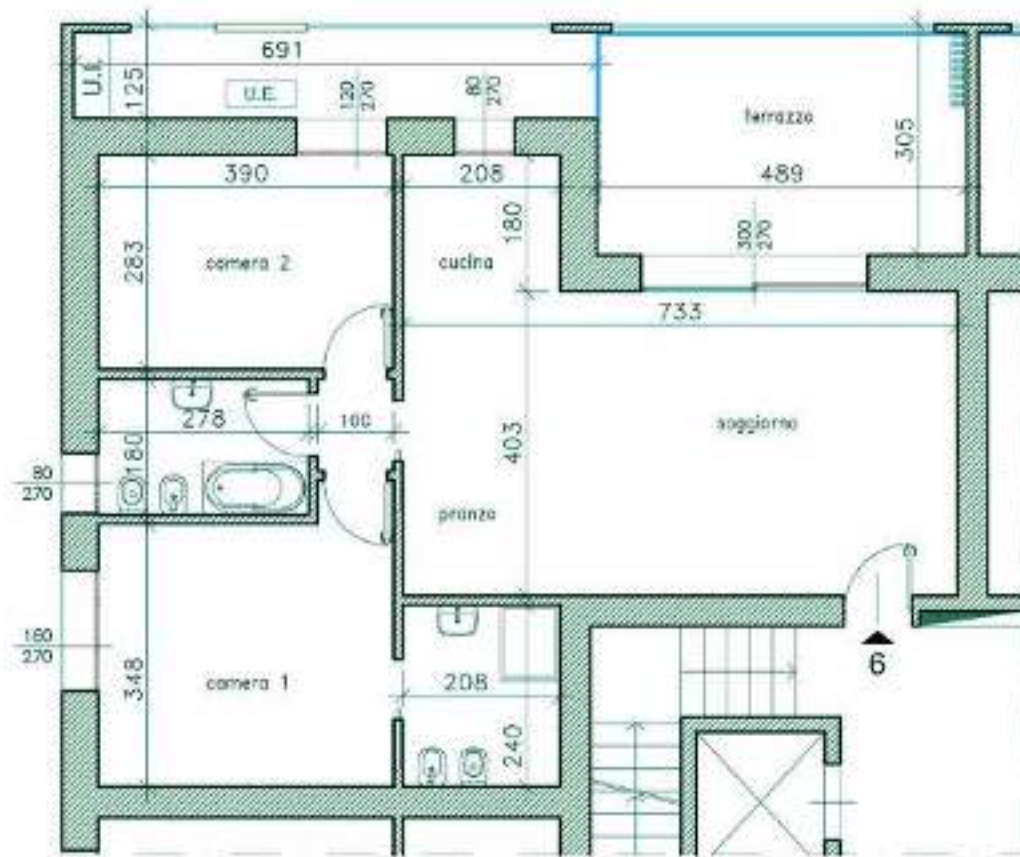


Superficie
Terrazzi
23,54 mq



Piano
primo

planimetrie arredata
e quotata dell'abitazione



ALLOGGIO A6

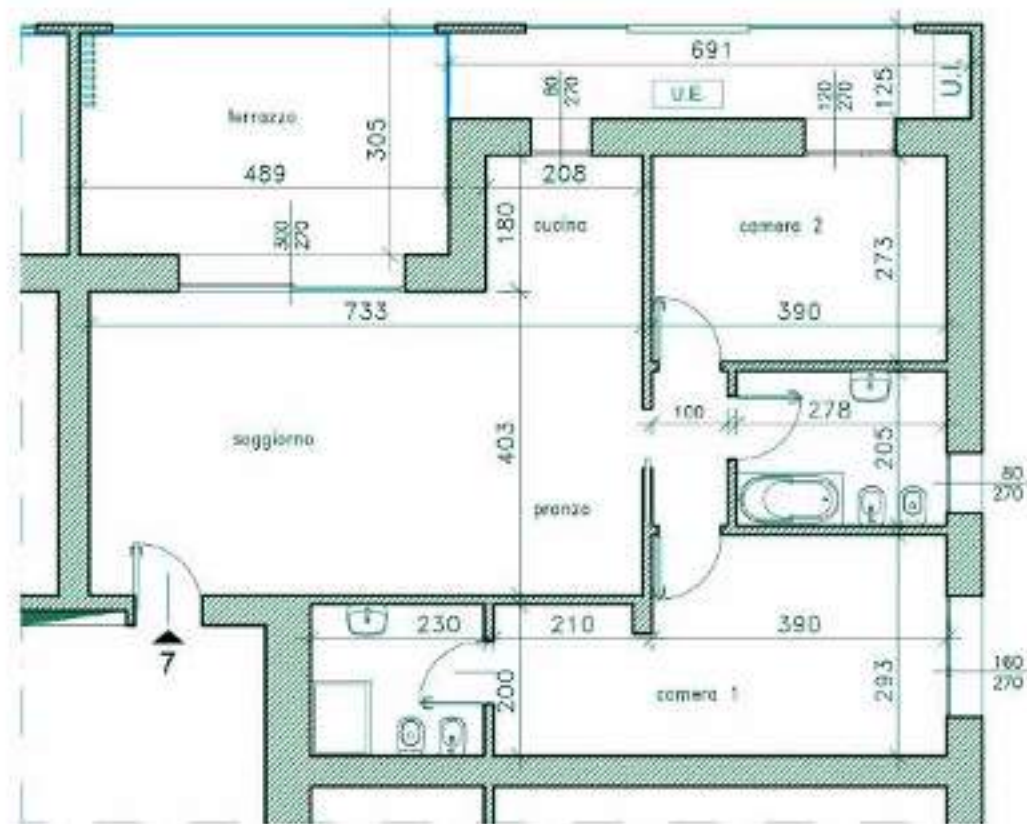

Superficie
Commerciale
105,44 mq


Superficie
Terrazzi
23,54 mq

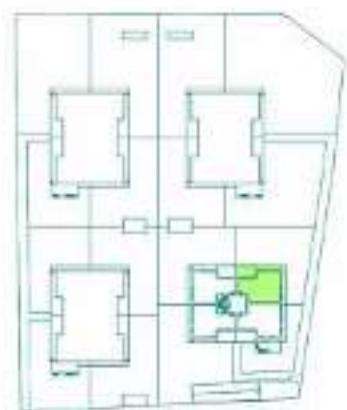

Piano
primo

planimetrie arredata
e quotata dell'abitazione

2V.
PROTEZIONE



ALLOGGIO A7

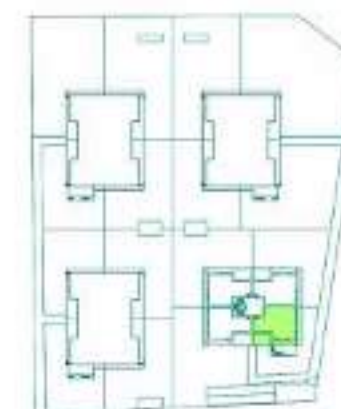
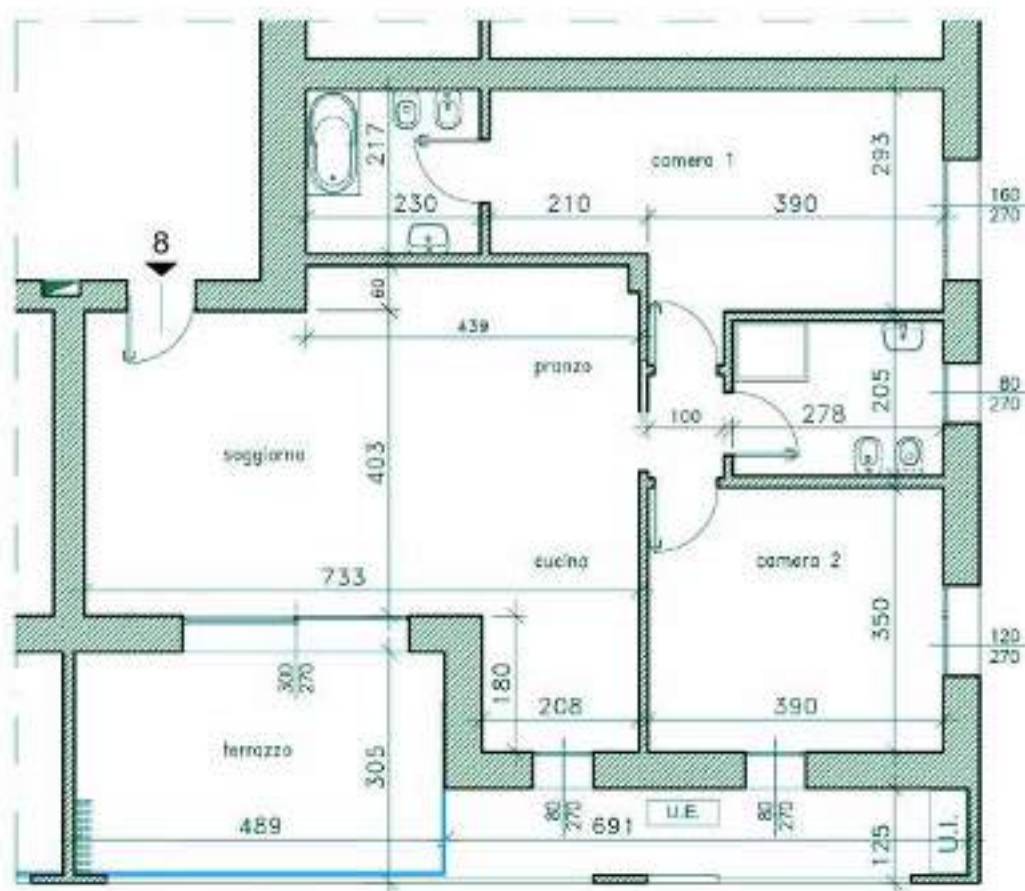



 Superficie
Commerciale
107,76 mq


 Superficie
Terrazzi
23,54 mq


 Piano
primo

planimetrie arredata
e quotata dell'abitazione



ALLOGGIO A8



Superficie
Commerciale
115,23 mq

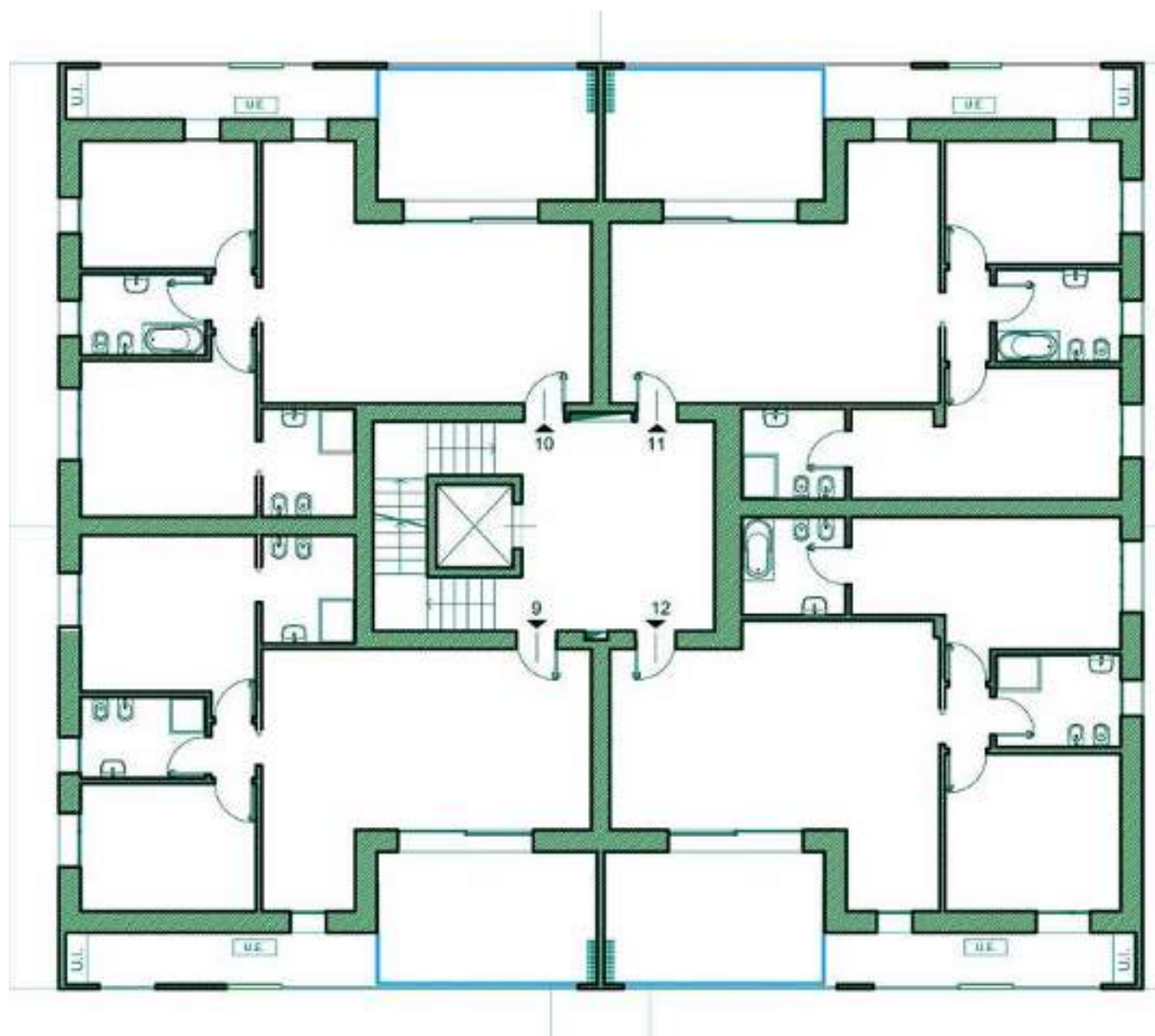


Superficie
Terrazzi
23,54 mq



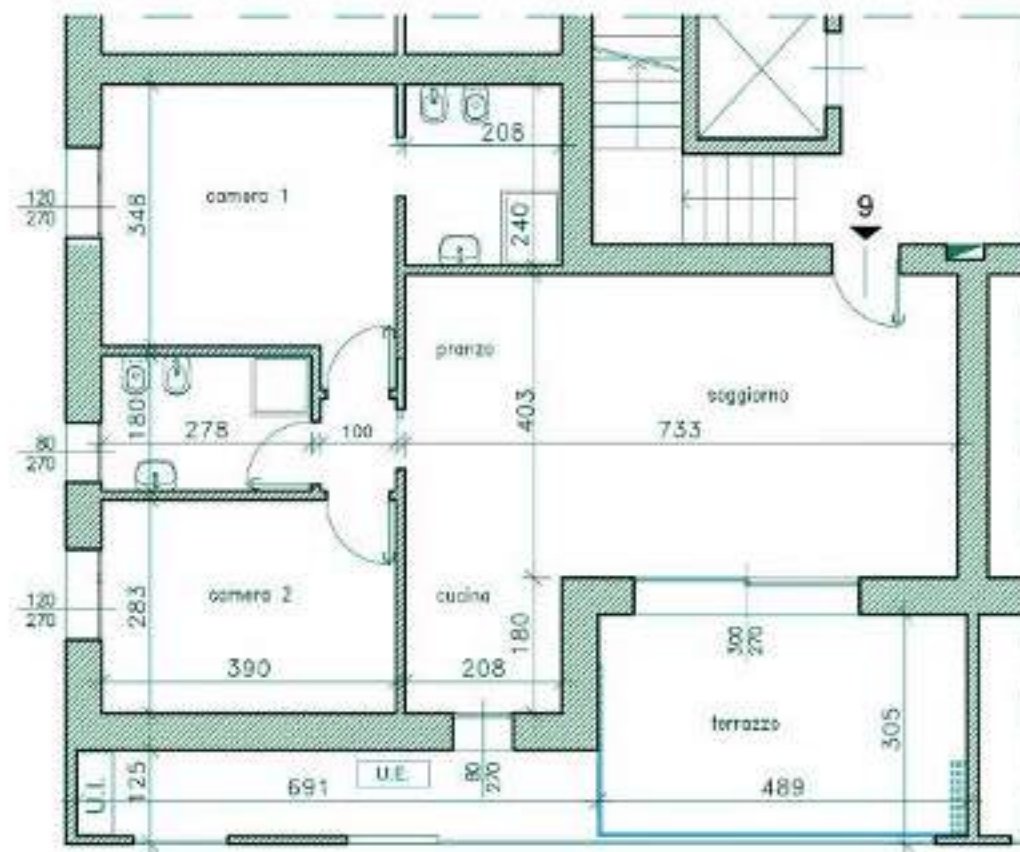
Piano
primo

planimetrie arredata
e quotata dell'abitazione

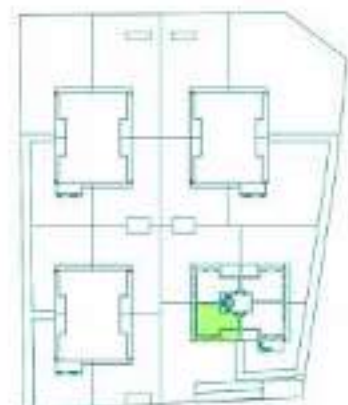


PIANO SECONDO
EDIFICIO A





ALLOGGIO A9

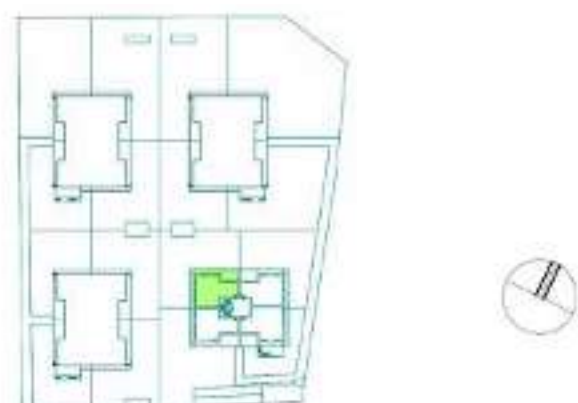
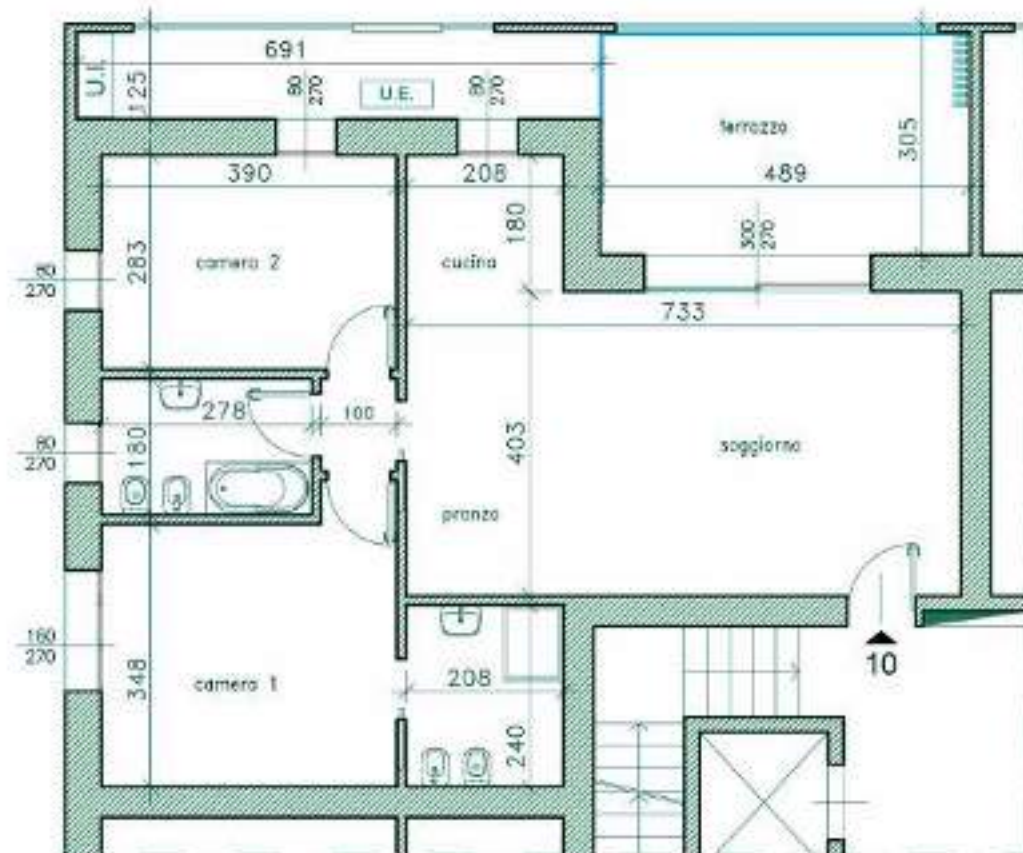



 Superficie
Commerciale
105,27


 Superficie
Terrazzi
23,54 mq


 Piano
secondo

planimetrie arredata
e quotata dell'abitazione



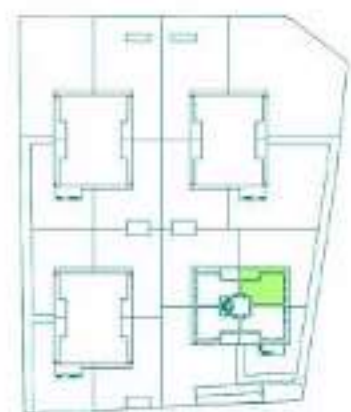
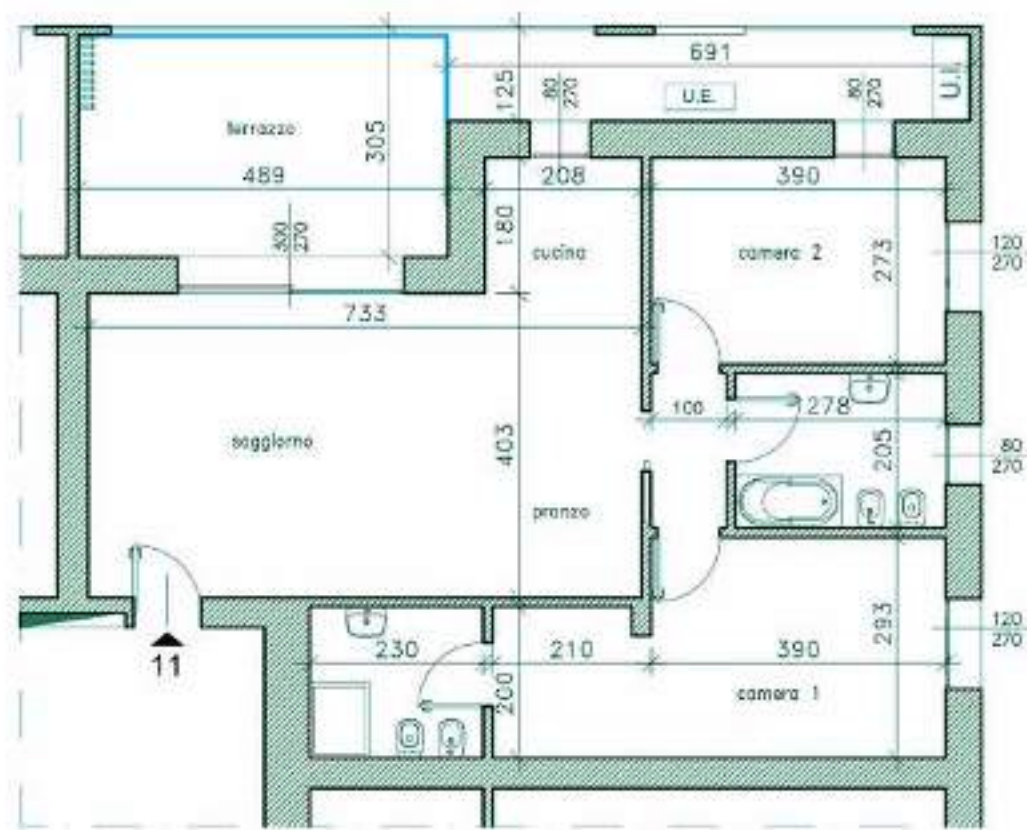
ALLOGGIO A10


Superficie
Commerciale
105,16 mq


Superficie
Terrazzi
23,54 mq


Piano
secondo

planimetrie arredata
e quotata dell'abitazione



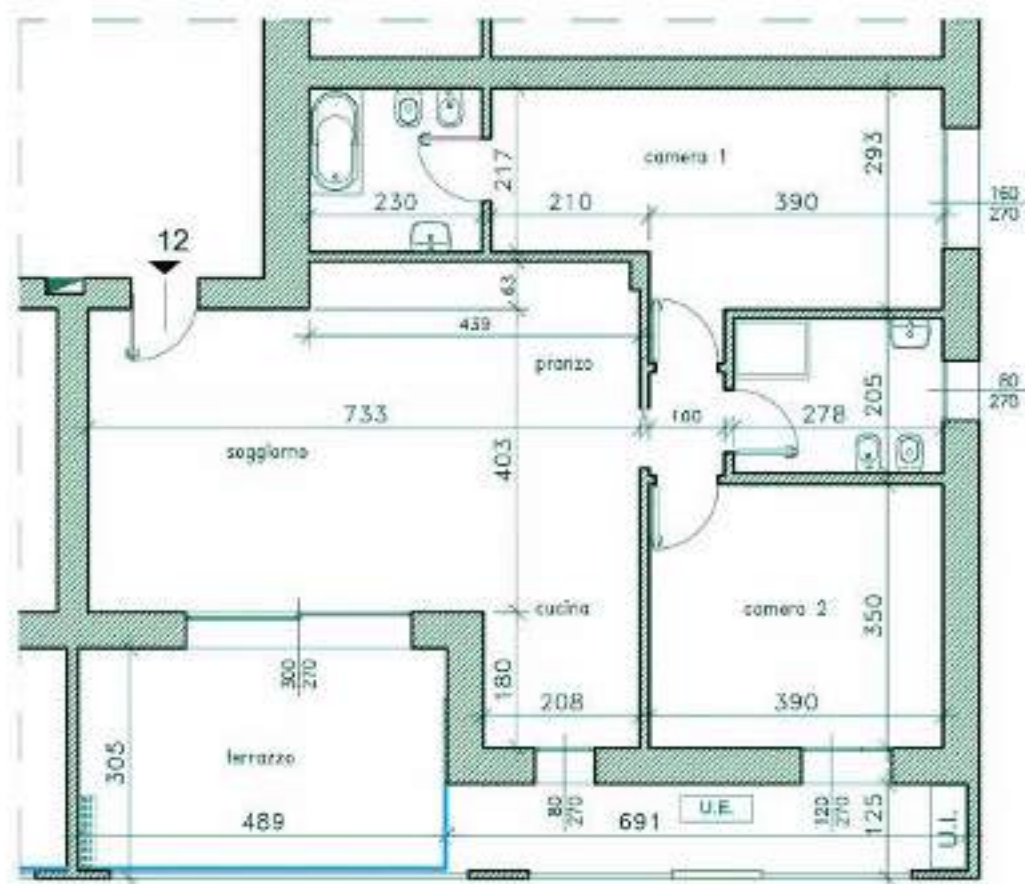
ALLOGGIO A11


Superficie
Commerciale
107,48 mq

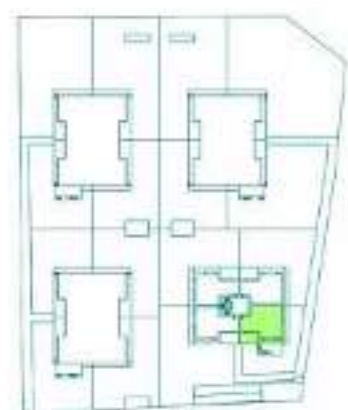

Superficie
Terrazzi
23,54 mq


Piano
secondo

planimetrie arredata
e quotata dell'abitazione



ALLOGGIO A12

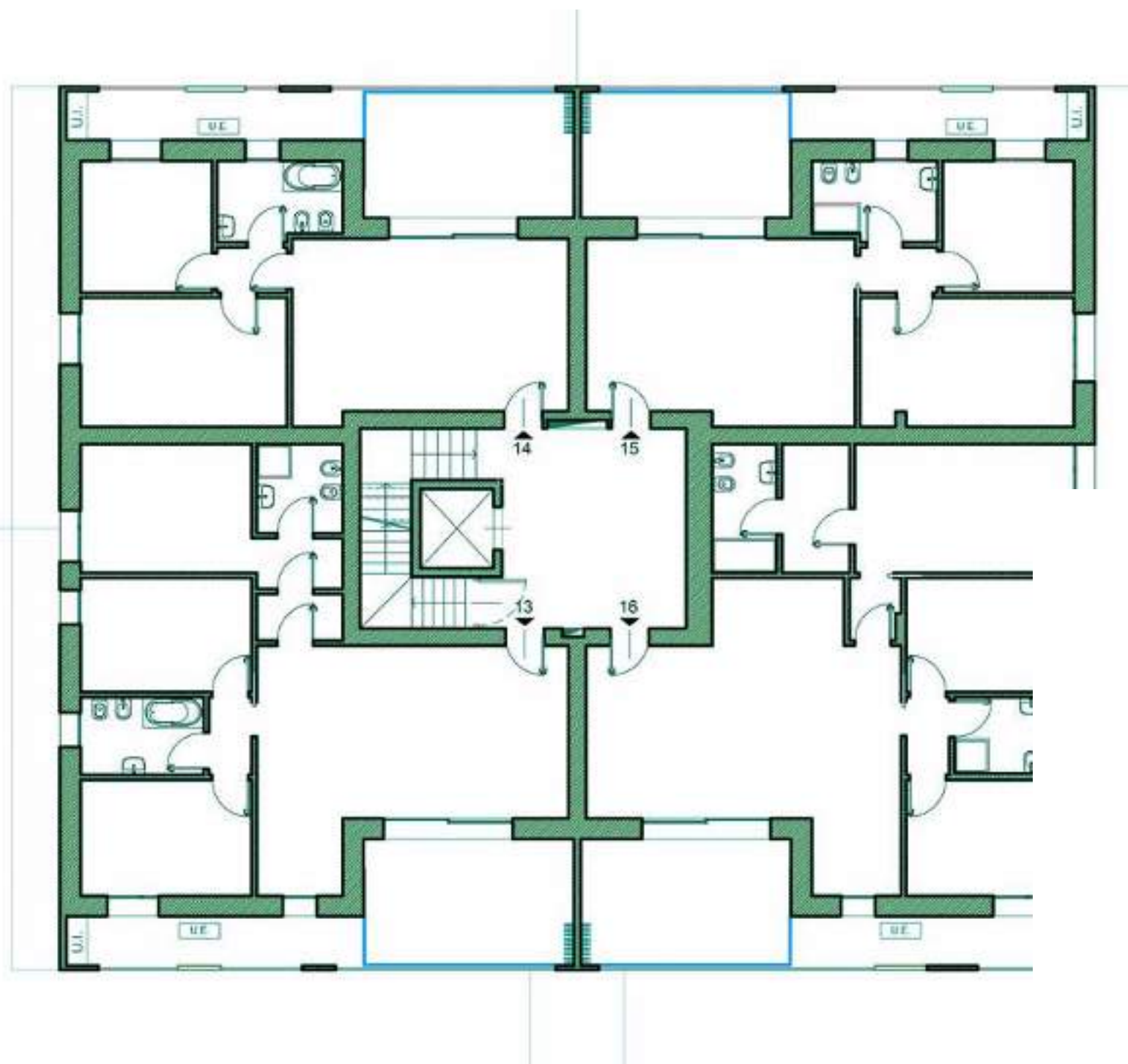


Superficie
Commerciale
115,4 mq

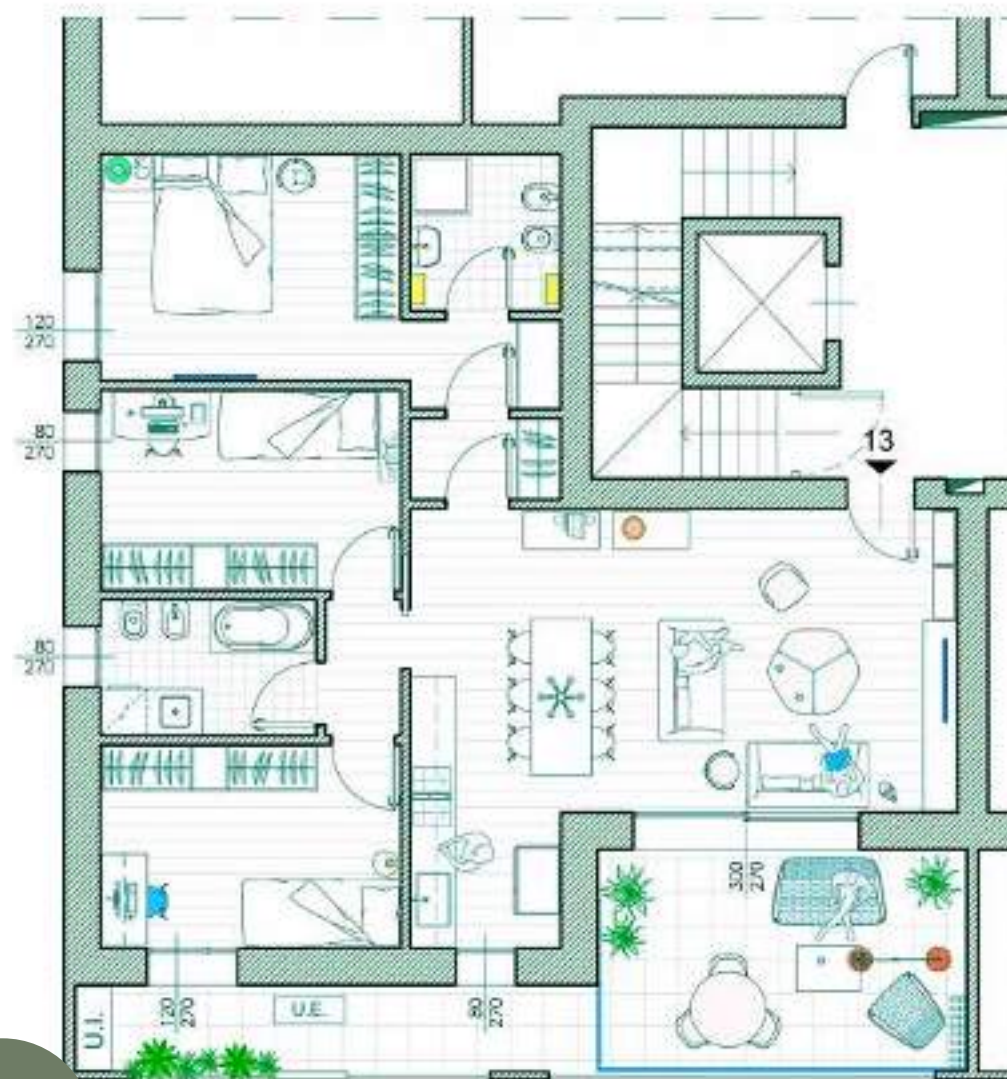
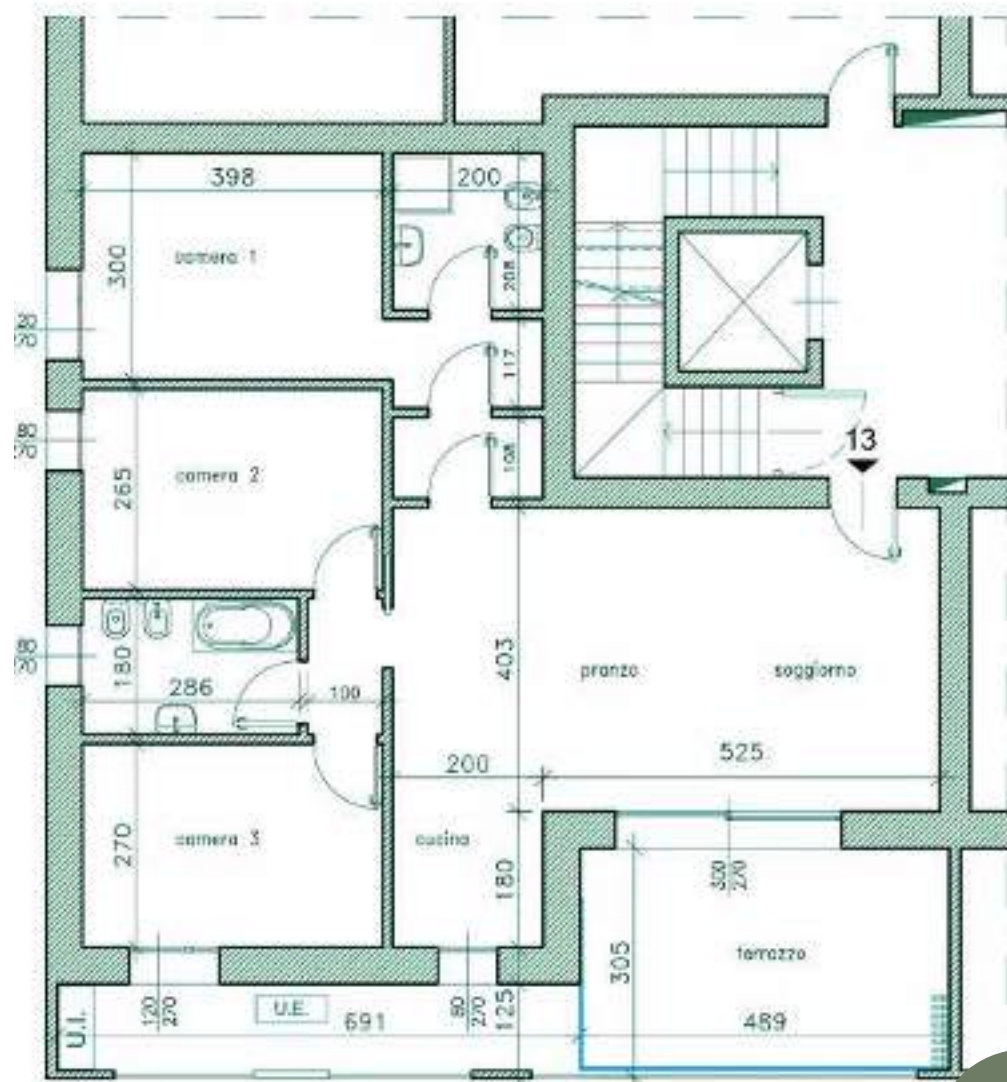
Superficie
Terrazzi
23,54 mq

Piano
secondo

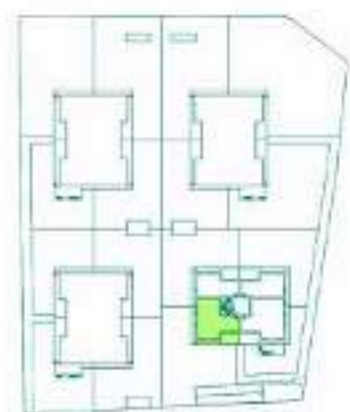
planimetrie arredata
e quotata dell'abitazione



PIANO TERZO
EDIFICIO A



ALLOGGIO A13

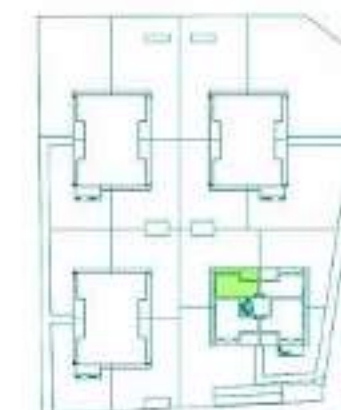
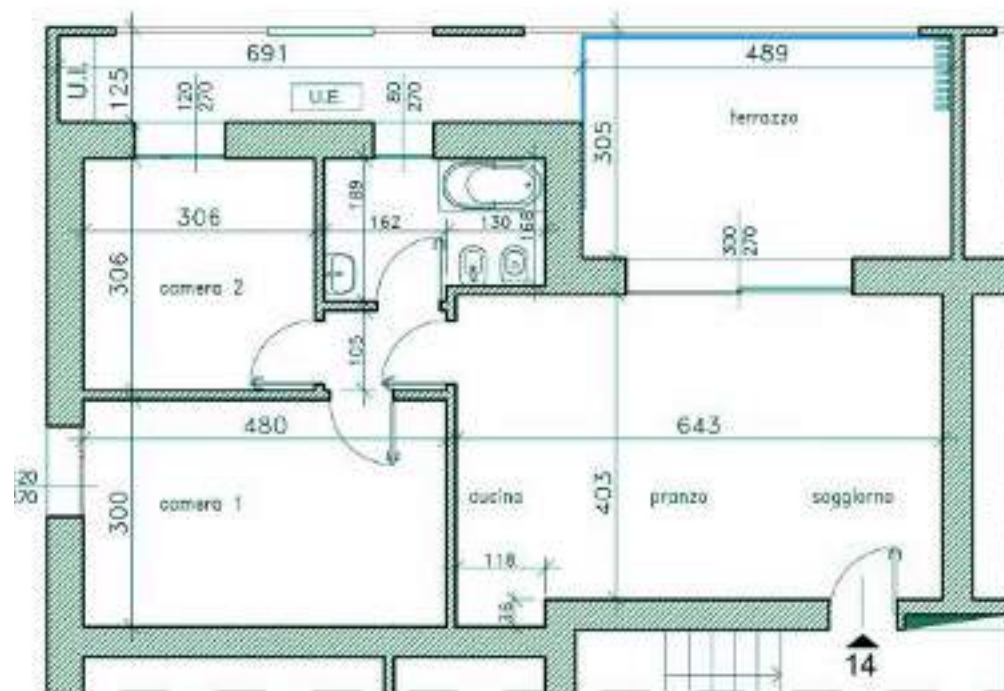



Superficie
Commerciale
120,86 mq


Superficie
Terrazzi
23,54 mq


Piano
terzo

planimetrie arredata
e quotata dell'abitazione



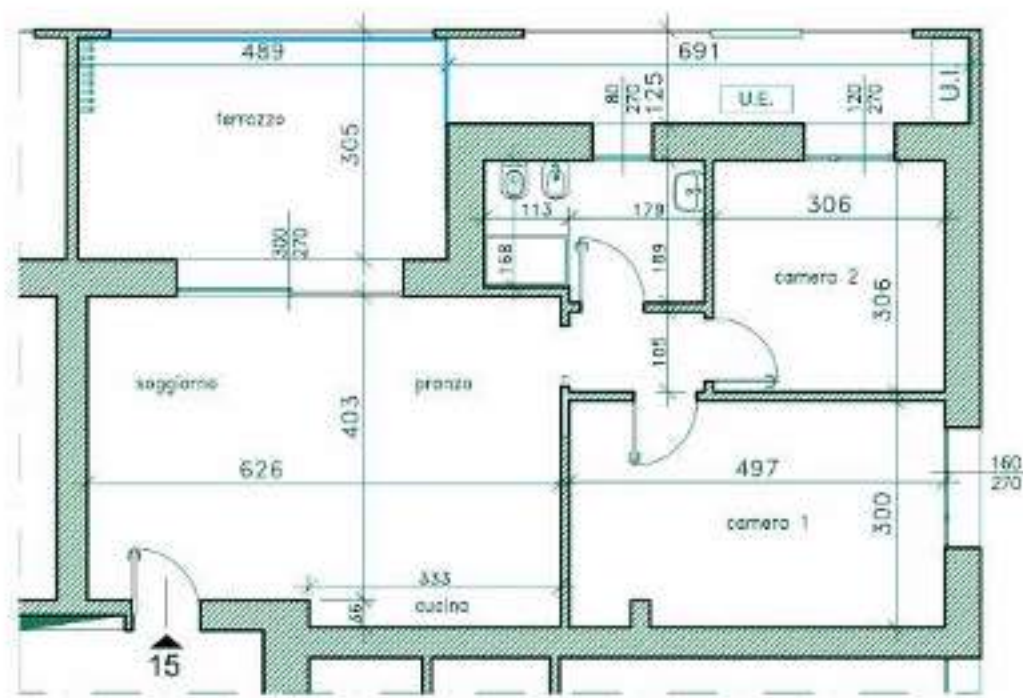
ALLOGGIO A14


Superficie
Commerciale
90,12 mq


Superficie
Terrazzi
23,54 mq


Piano
terzo

planimetrie arredata
e quotata dell'abitazione



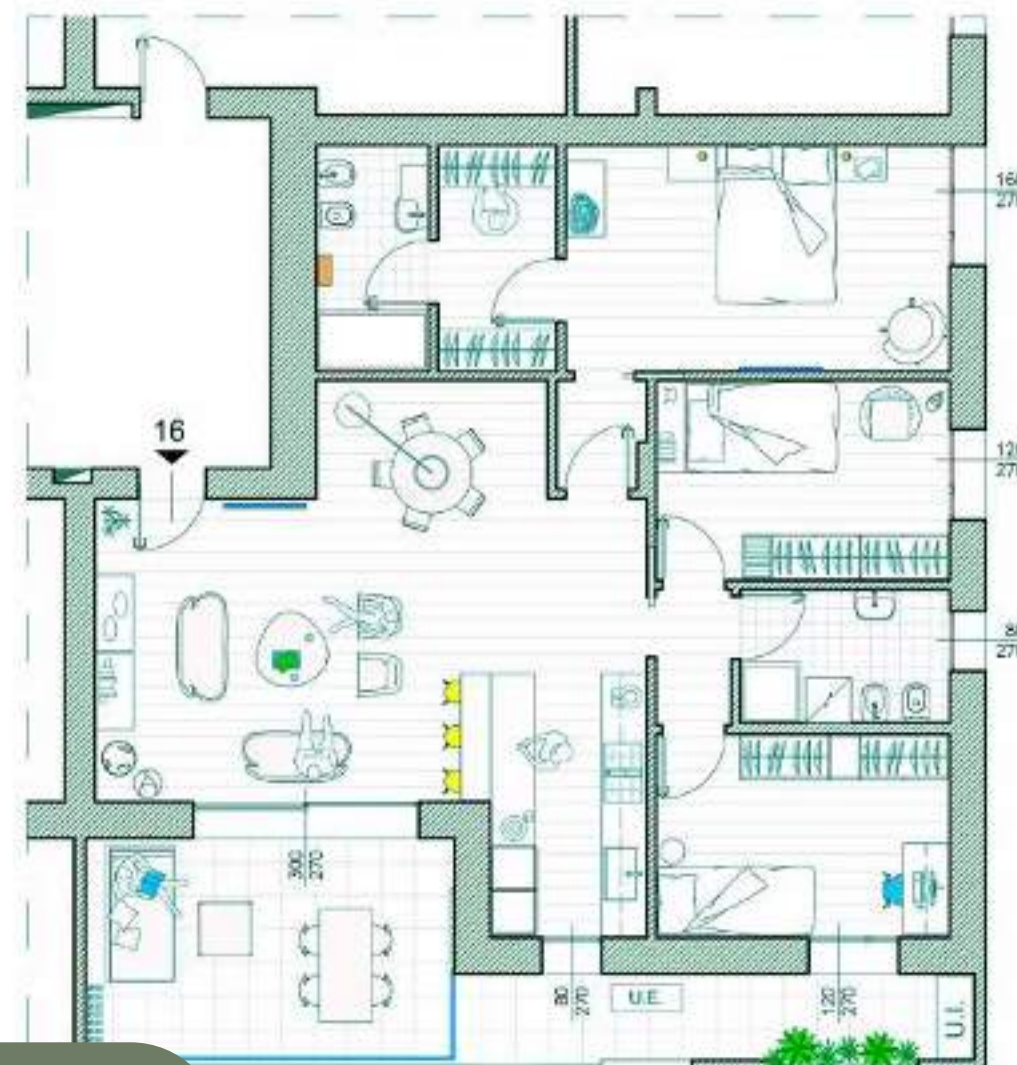
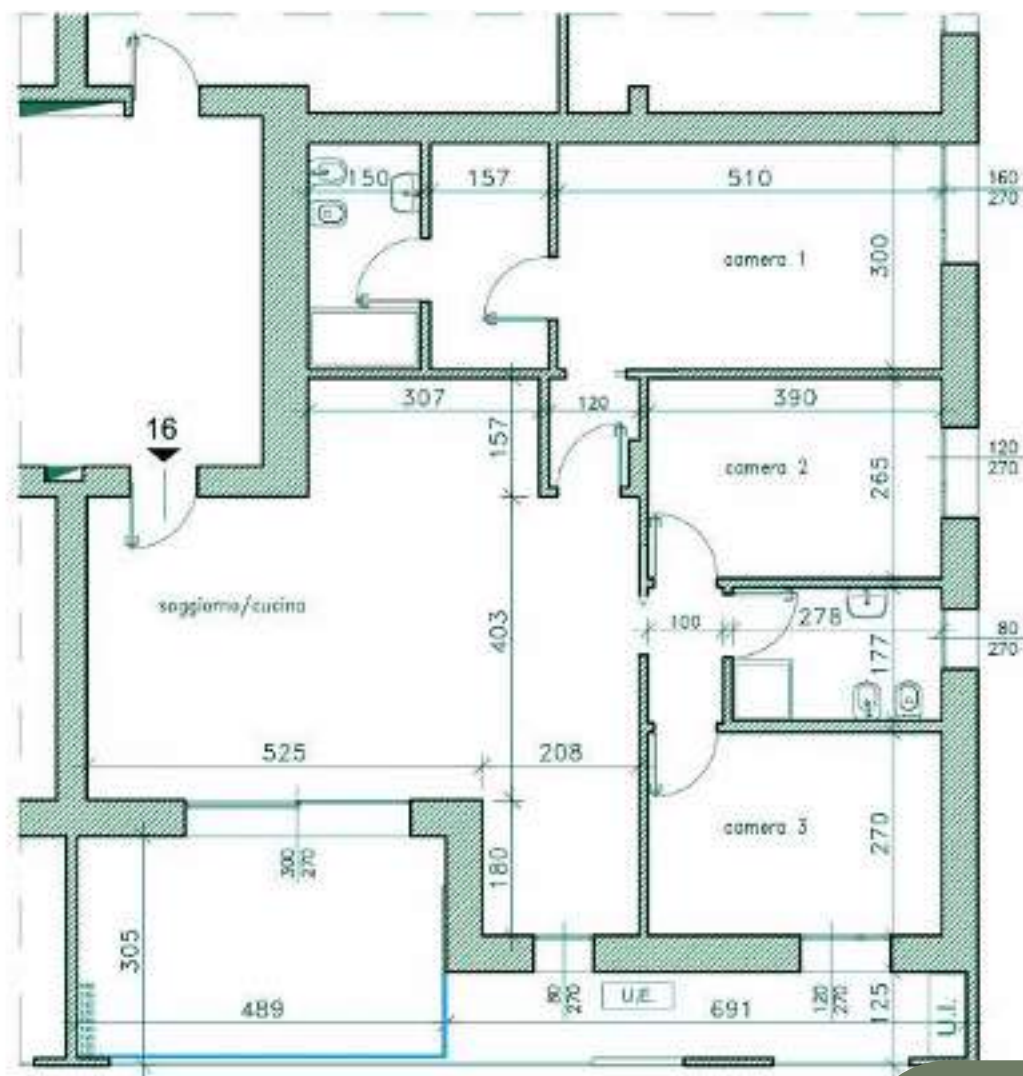
ALLOGGIO A15


Superficie
Commerciale
91 mq

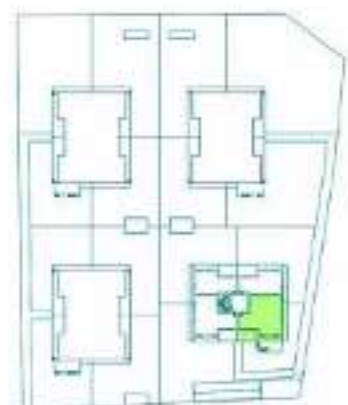

Superficie
Terrazzi
23,54 mq


Piano
terzo

planimetrie arredata
e quotata dell'abitazione




ALLOGGIO A16




Superficie
Commerciale
132,39 mq


Superficie
Terrazzi
23,54 mq


Piano
terrazzo

planimetrie arredata
e quotata dell'abitazione