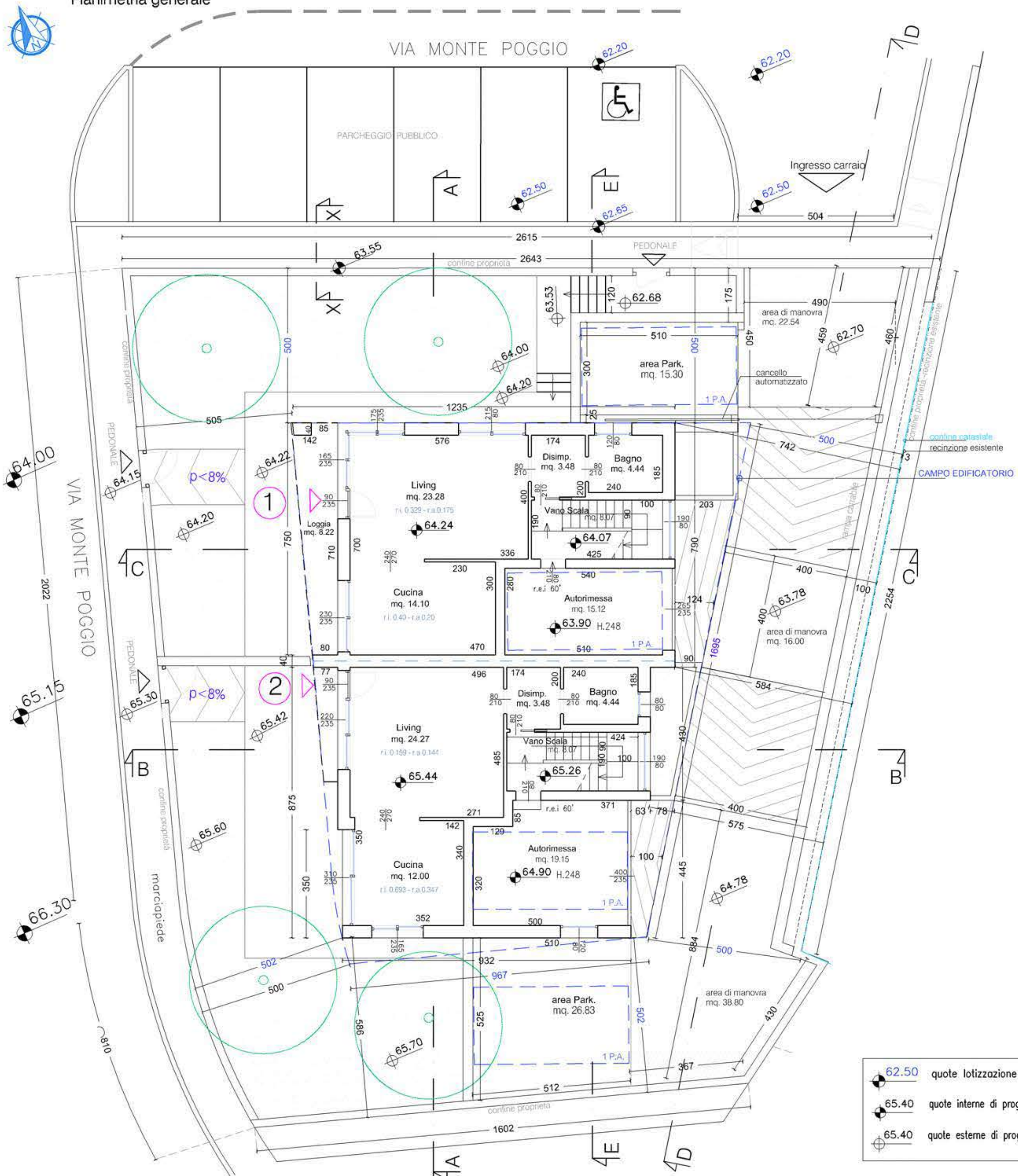
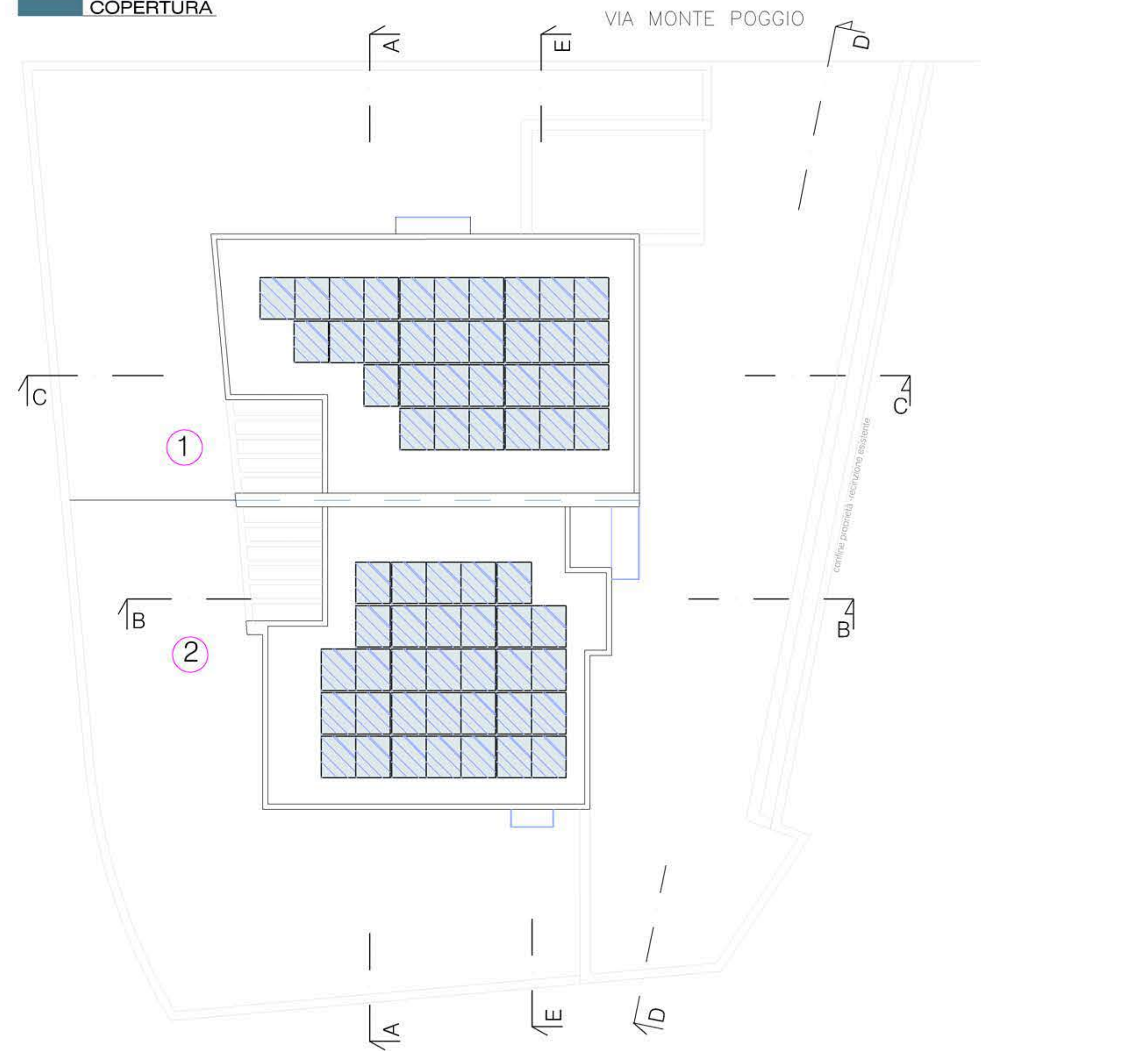


PIANO TERRA
Planimetria generale



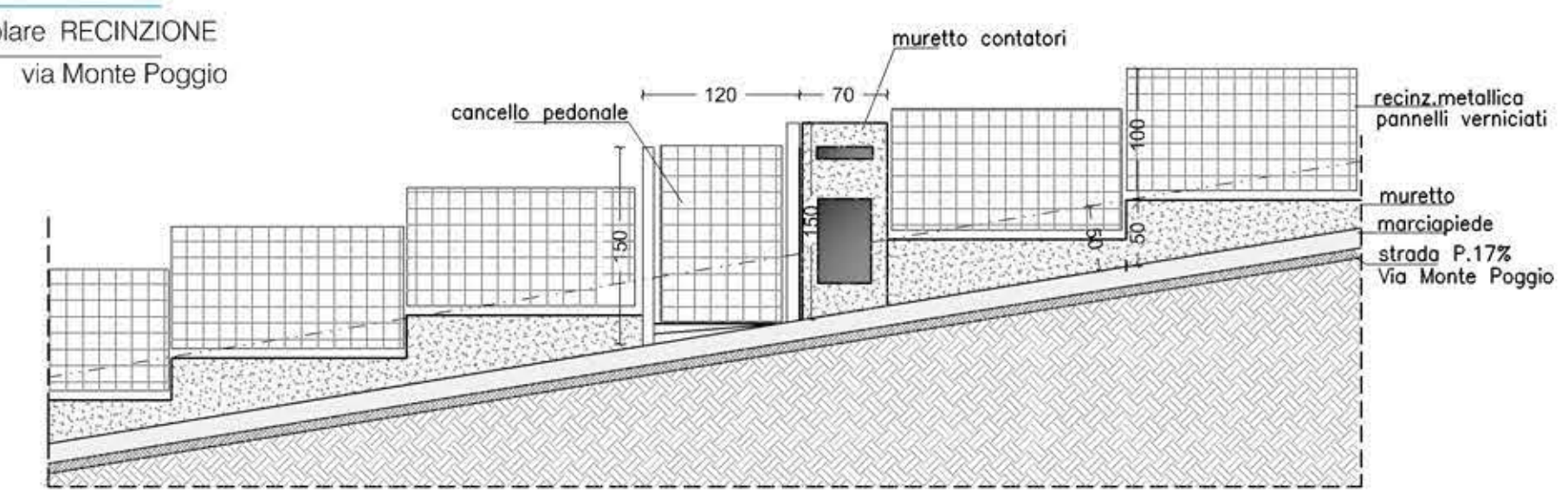
COPERTURA



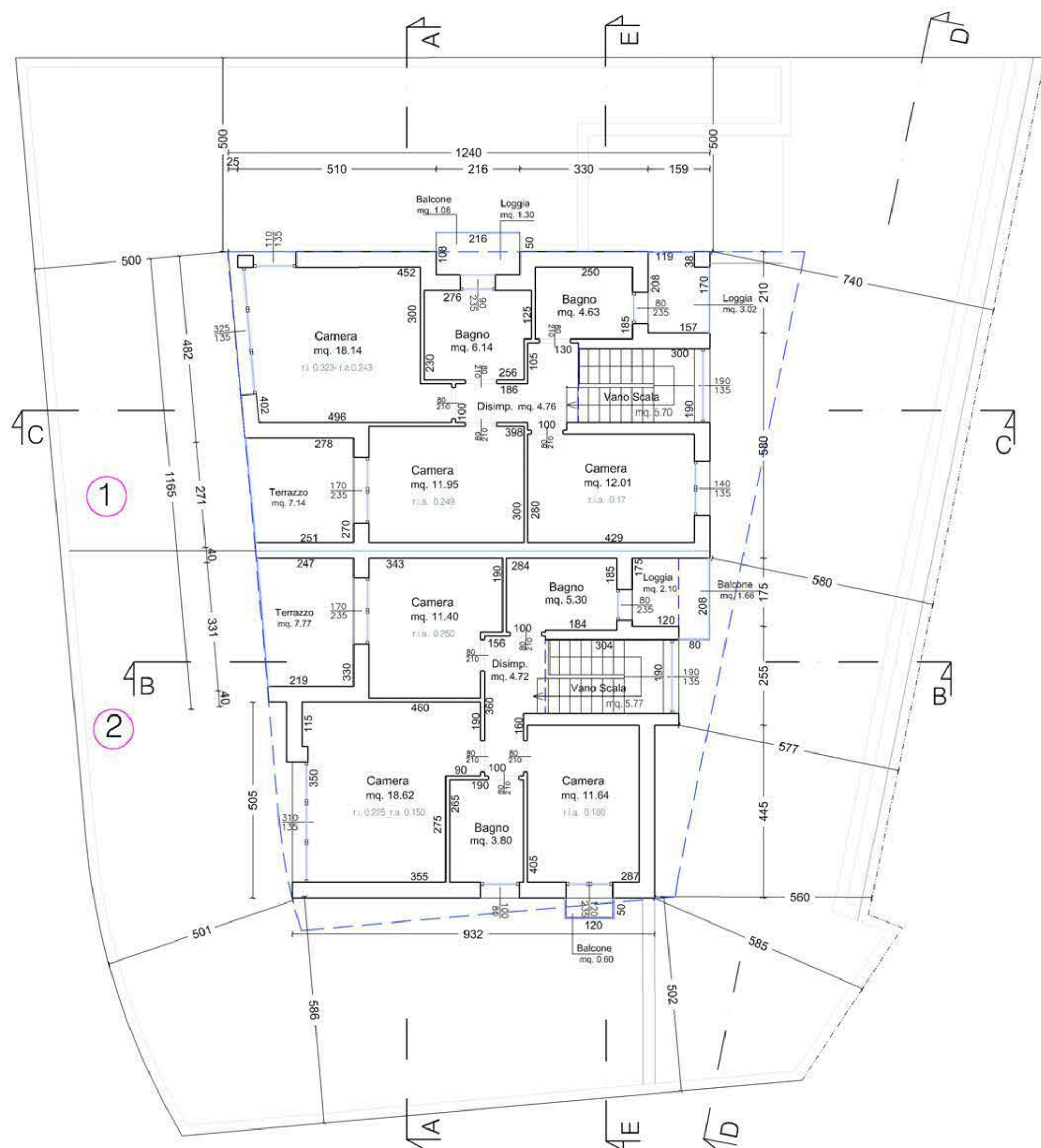
SEZIONE tipo verso Aree Pubbliche
Scala 1:50 - prescrizioni

Particolare RECINZIONE
1/50 via Monte Poggio

Parapetti in prossimità delle zone pubbliche conformi norme vigenti

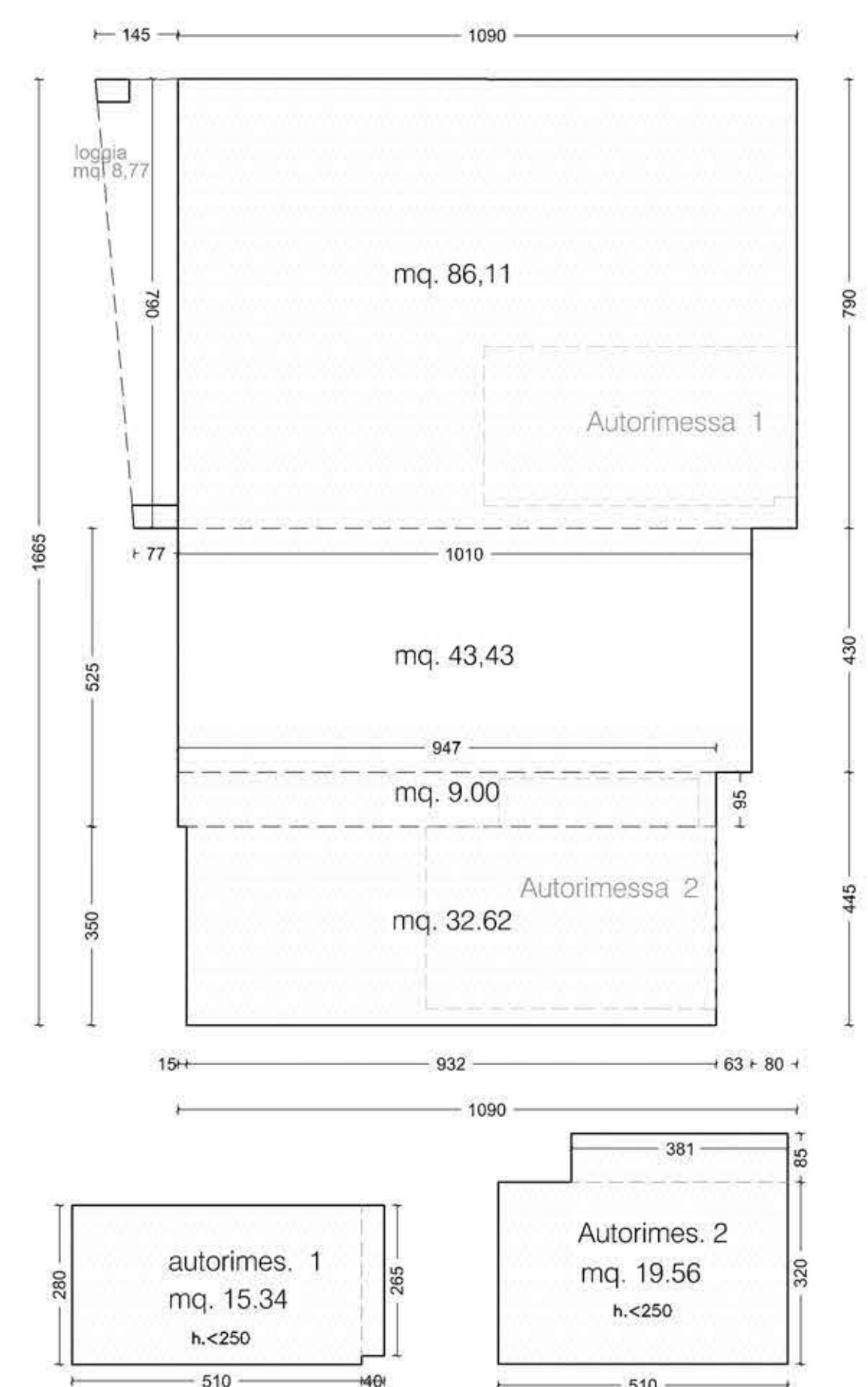


PIANO PRIMO

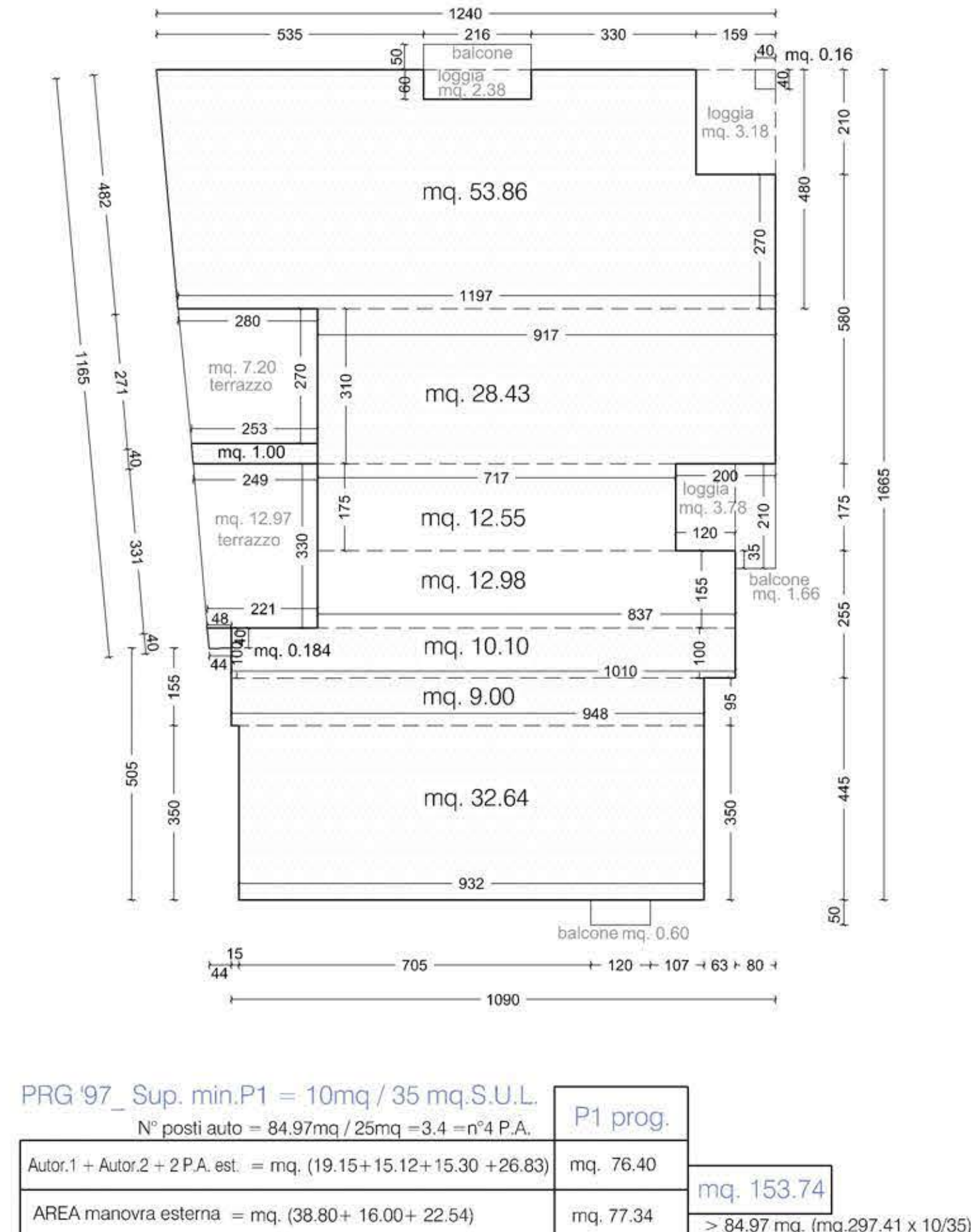


DATI TECNICO - URBANISTICI_NdA -PRG.97_Var.2005

PIANO TERRA



PIANO PRIMO



PRG 97_Sup. min.P1 = 10mq / 35 mq.S.U.L.
N° posti auto = 84,97mq / 25mq = 3,4 = n°4 P.A.

Autor.1 + Autor.2 + 2 P.A. est. = mq. (19.15+15.12+15.30+26.83)	mq. 76.40	mq. 153,74 > 84,97 mq. (mq.297,41 x 10/35)
AREA manovra esterna = mq. (38.80+ 16.00+ 22.54)	mq. 77.34	

	Art.10 - c.13), c.14)	A) Sup. Lorda	B) Garage	C) Sup.Utilile L.	D) Logge	C - S. Coperta
PIANO TERRA	mq. (86.11+43.43+9.00+32.62) =	mq. 171.16	mq. 34.90	mq. 136.51	mq. 8.77	mq. 179.93
PIANO PRIMO	mq. (53.86+28.43+12.55+12.98+10.10+9.00+32.62+1.00+0.184+0.16) =	mq. 160.90		mq. 160.90	mq. 9.34	
TOTALE			mq. 34.90	mq. 297.41	mq. 18.11	
			< 90 mq. (30% SUL)	< 300.30 mq.	< 45mq. (25% S.C.)	

