

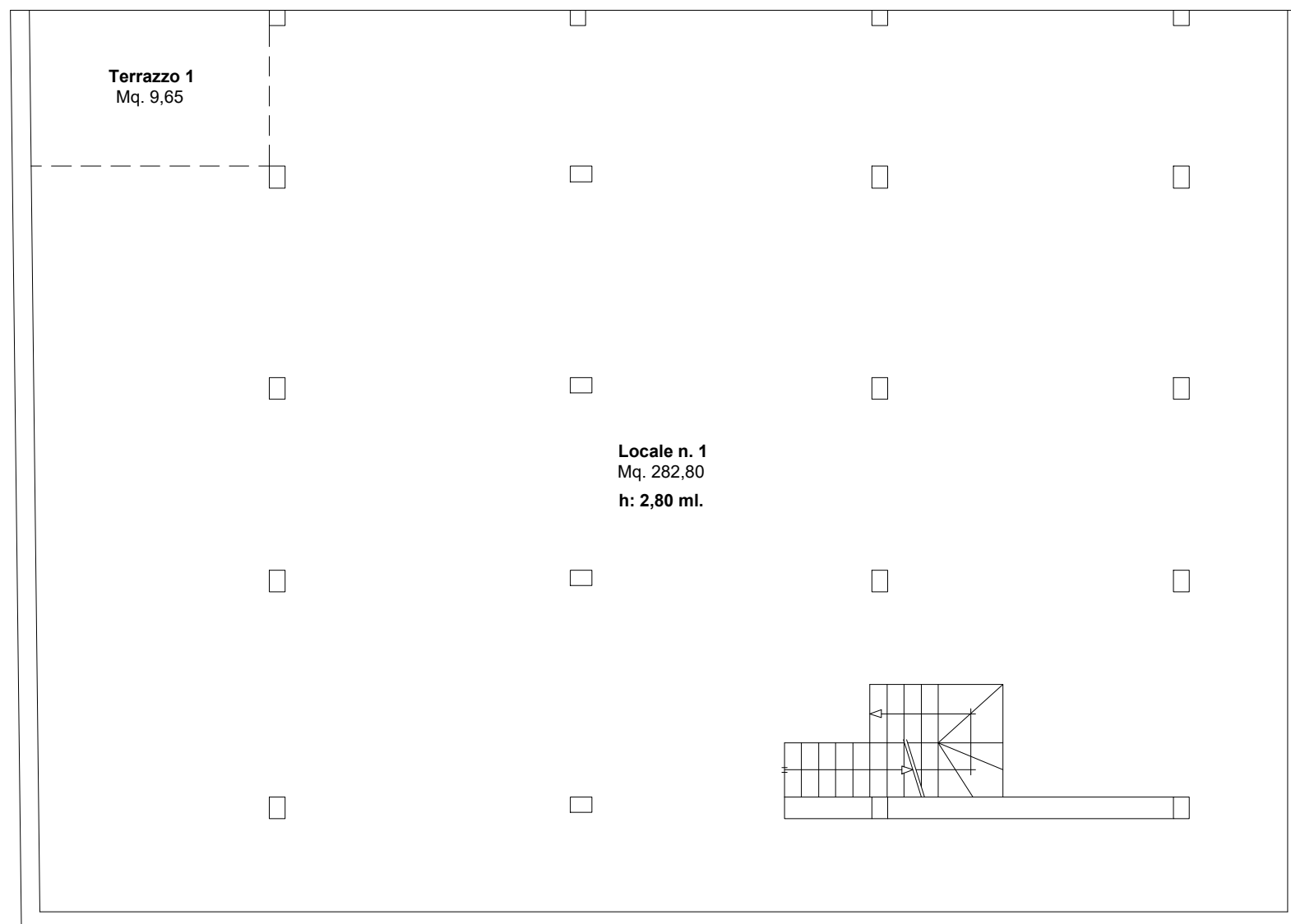
Locale n. 1
Mq. 54,78
h: 2,90 ml.

Locale n. 2
Mq. 232,43
h: 2,90 ml.



PIANO SEMINTERRATO 2

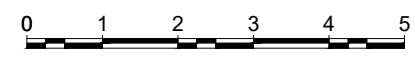
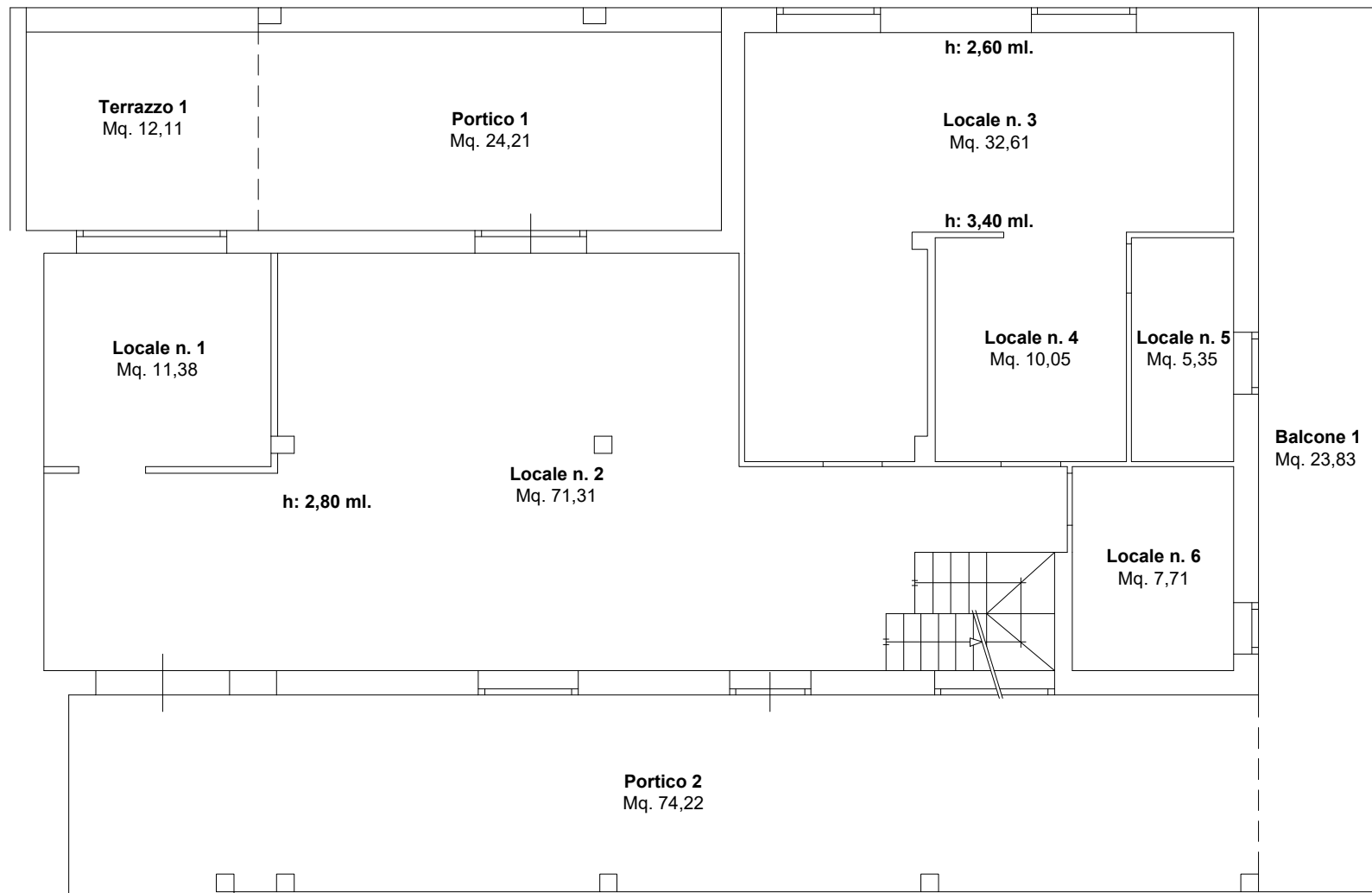
Sup. netta: 287,21 mq.
Sup. lorda: 308,64 mq.



PIANO SEMINTERRATO 1

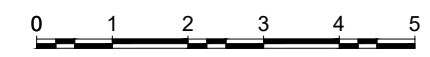


Sup. netta:	282,80 mq.
Sup. lorda:	296,95 mq.
Sup. terrazzo:	9,65 mq.



PIANO TERRA

Sup. netta:	138,41 mq.
Sup. lorda:	162,38 mq.
Sup. portici:	98,43 mq.
Sup. balconi:	23,83 mq.
Sup. terrazzi:	12,11 mq.



PIANO PRIMO

Sup. netta: 40,36 mq.
 Sup. lorda: 49,49 mq.
 Sup. netta soffitta: 50,49 mq.
 Sup. lorda soffitta: 57,32 mq.