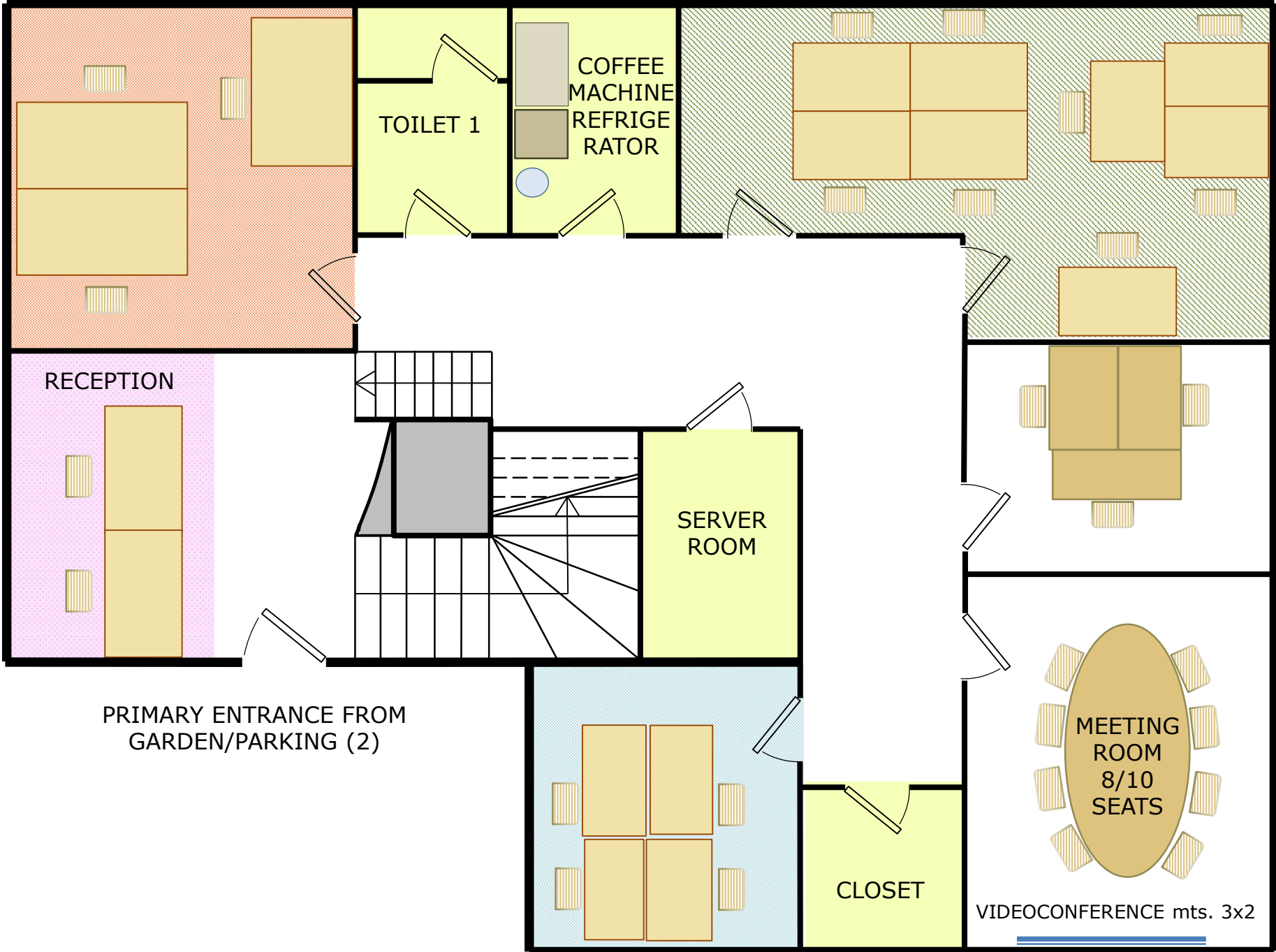


GROUND/BASEMENT FLOOR (240 sqm.) - HTLC Residential & Office Services S.r.l.



Via Tommaso da Cazzaniga, 9/6 x +

https://www.google.it/maps/place/Via+Tommaso+da+Cazzaniga,+9%2F6,+20121+Milano+MI/@45.4767849,9.1671527,13z/data=!4m5!3m4!1s0x4786c1

Apps 000.Backtowork web Il Sole 24 Ore - Edizio Businesses For Sale CIPP homepage A.A.Concorrenza wor A.Banche Luca A.Centri Impiego.Pro

Via Tommaso da Cazzaniga, 9/6, 1



Via Tommaso da Cazzaniga, 9/6

20121 Milano MI

Directions



SAVE



NEARBY



SEND TO YOUR PHONE



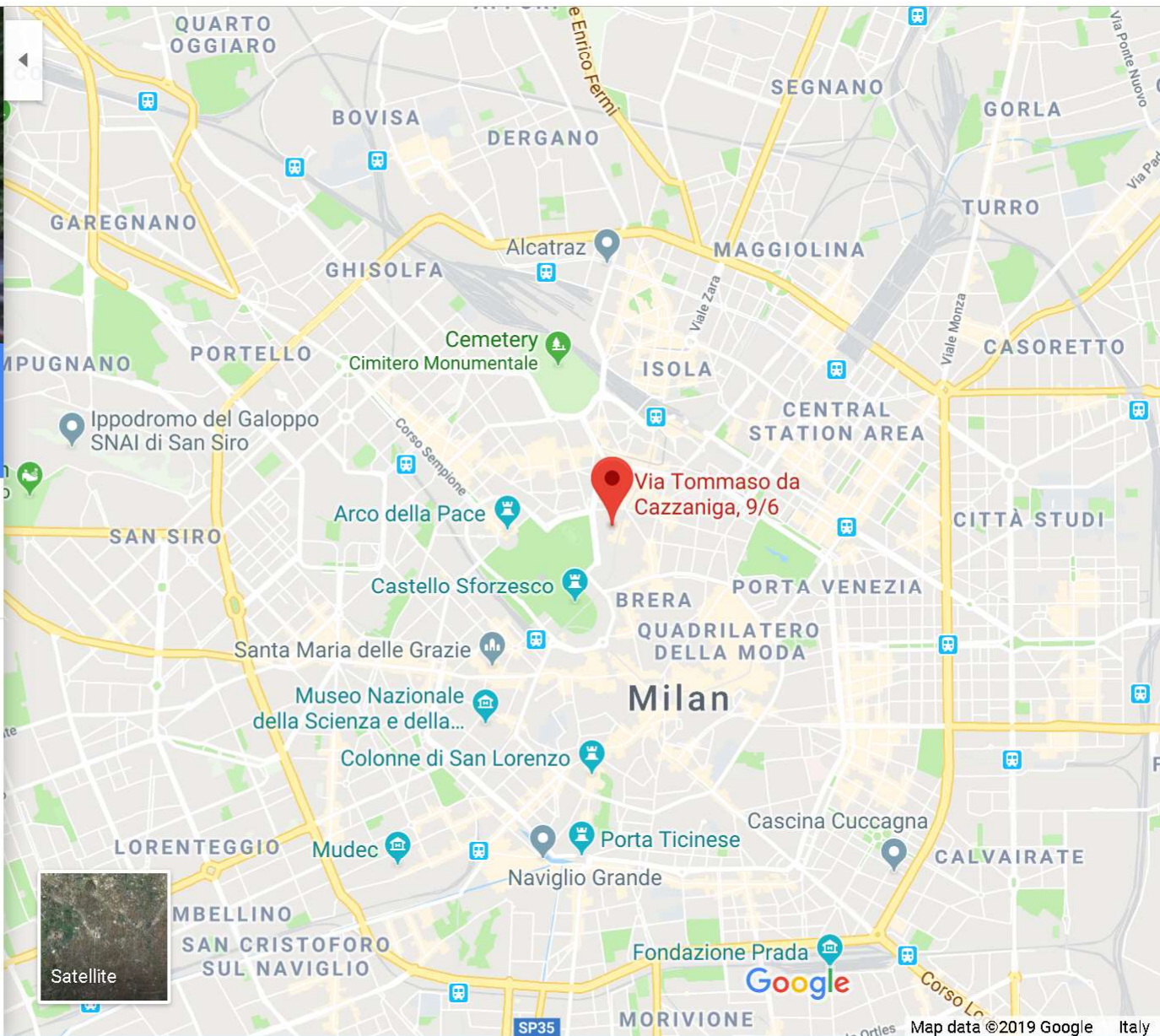
SHARE



Add a missing place



At this location



PRIMARY ENTRANCE FROM