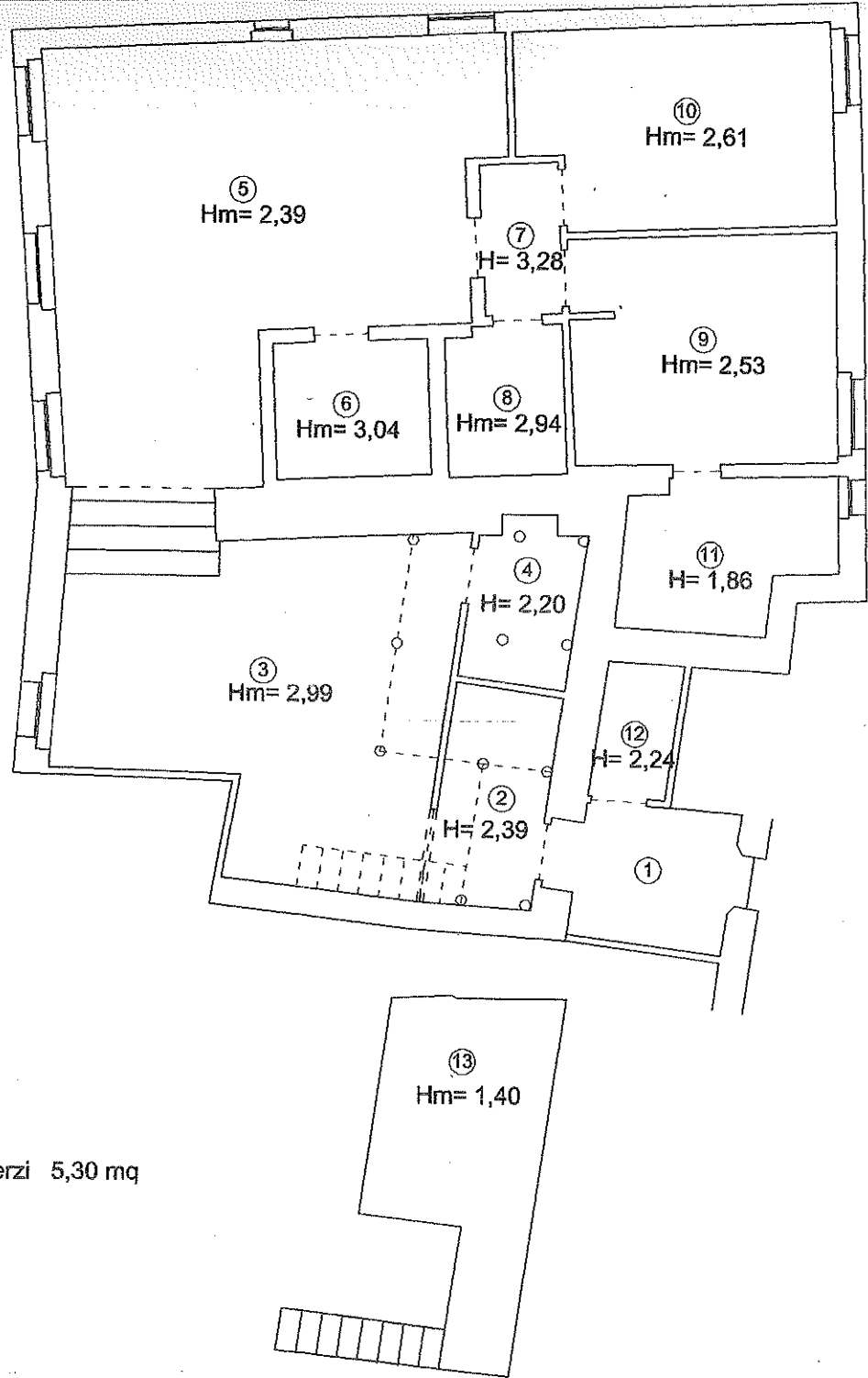
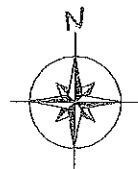


Via dell'Oratorio



- 1 - Parte in comune con Properzi 5,30 mq
- 2 - Ingresso 4,97 mq
- 3 - Soggiorno 25,67 mq
- 4 - Ripostiglio 3,62 mq
- 5 - Sala da pranzo 32,54 mq
- 6 - Cucina 4,47 mq
- 7 - Corridoio 2,61 mq
- 8 - Bagno A 3,64 mq
- 9 - Camera A 12,64 mq
- 10 - Camera B 12,61 mq
- 11 - Bagno B 6,08 mq
- 12 - Lavanderia 2,19 mq
- 13 - Soppalco 10,32 mq



Scala 1:100