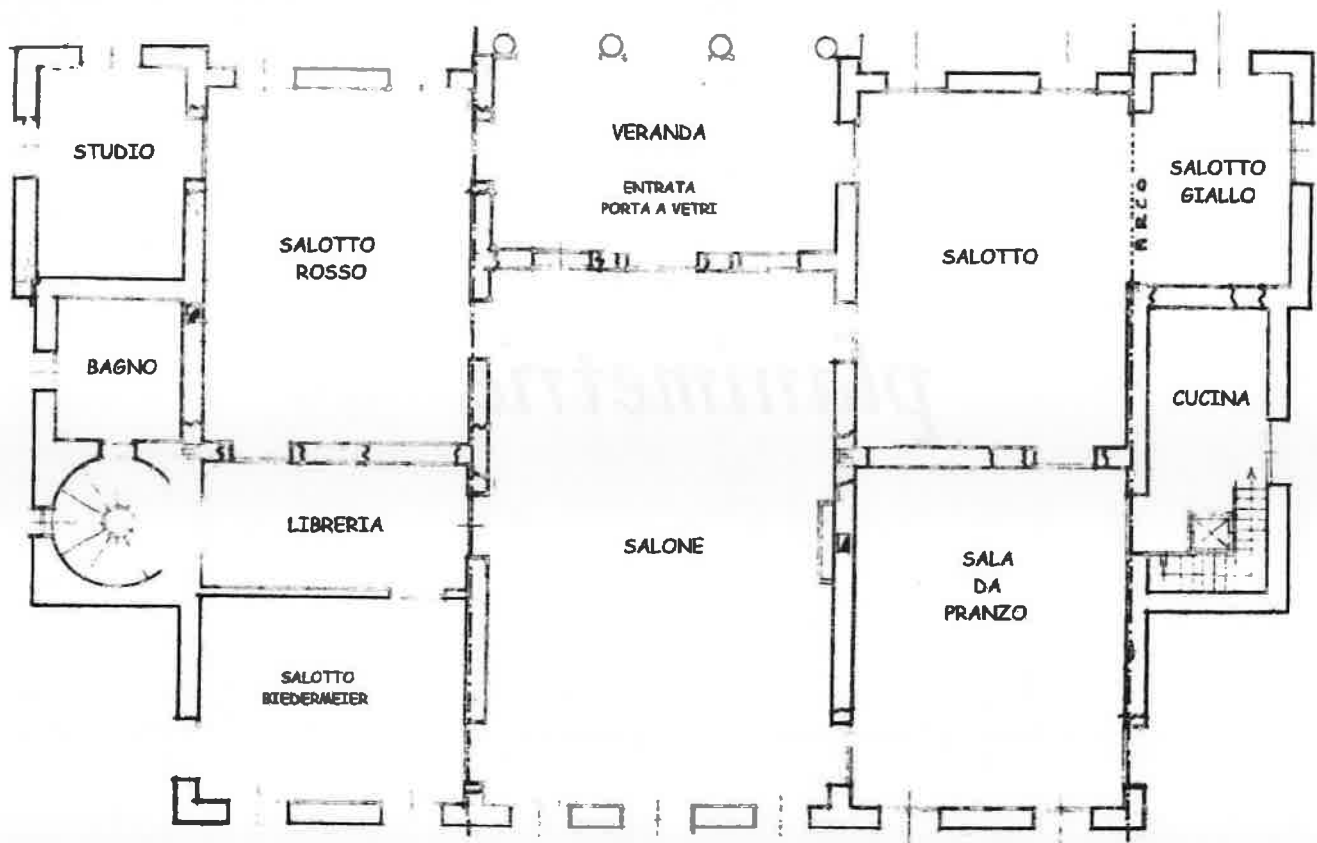
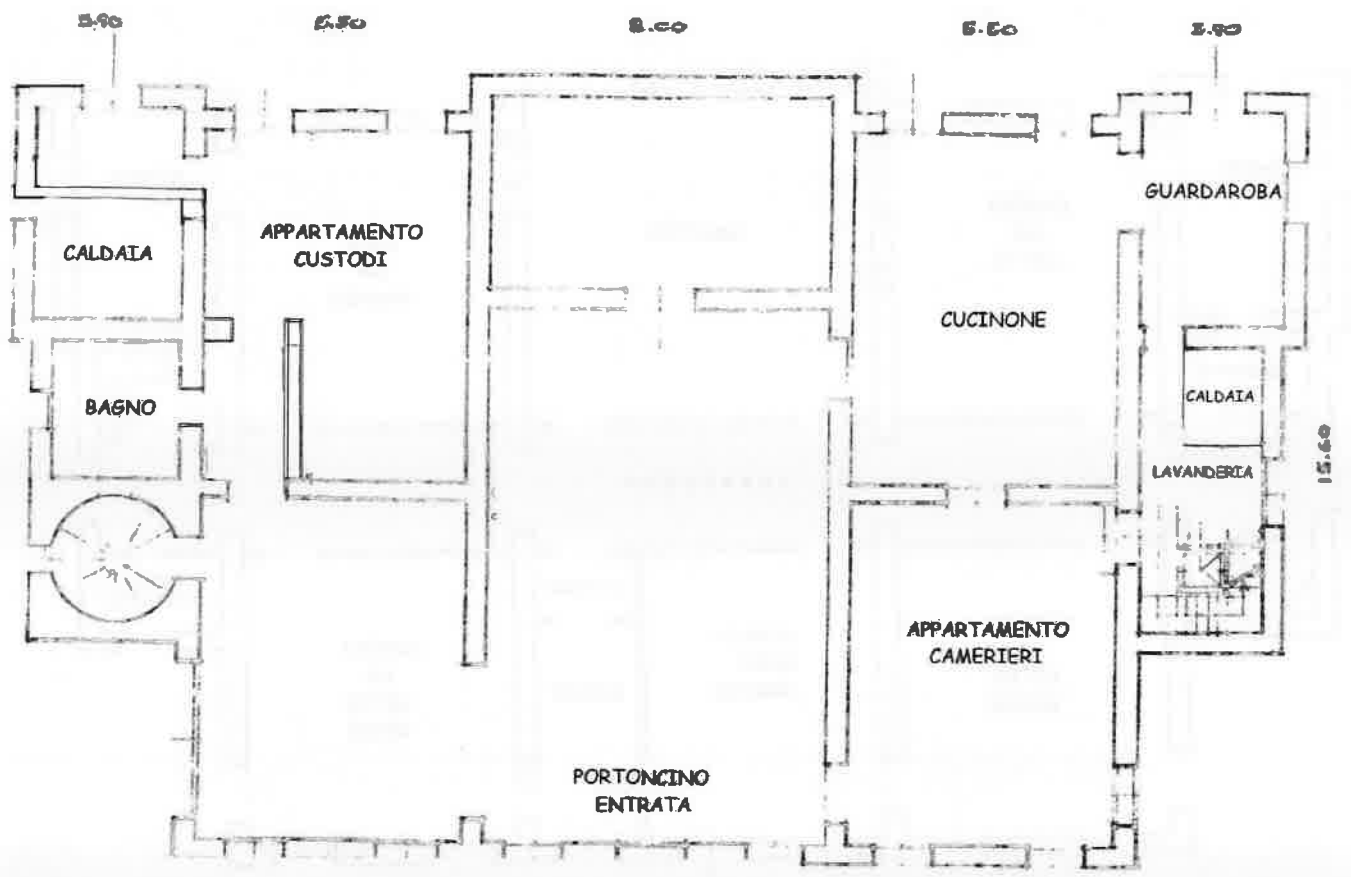


A faint, light-colored architectural floor plan is visible in the background. It shows a symmetrical layout with a central horizontal corridor or hallway. On either side of this central axis, there are several rectangular rooms of varying sizes. Some rooms have internal lines suggesting furniture or partitions. The overall impression is that of a technical drawing or blueprint, rendered in a very light tone.

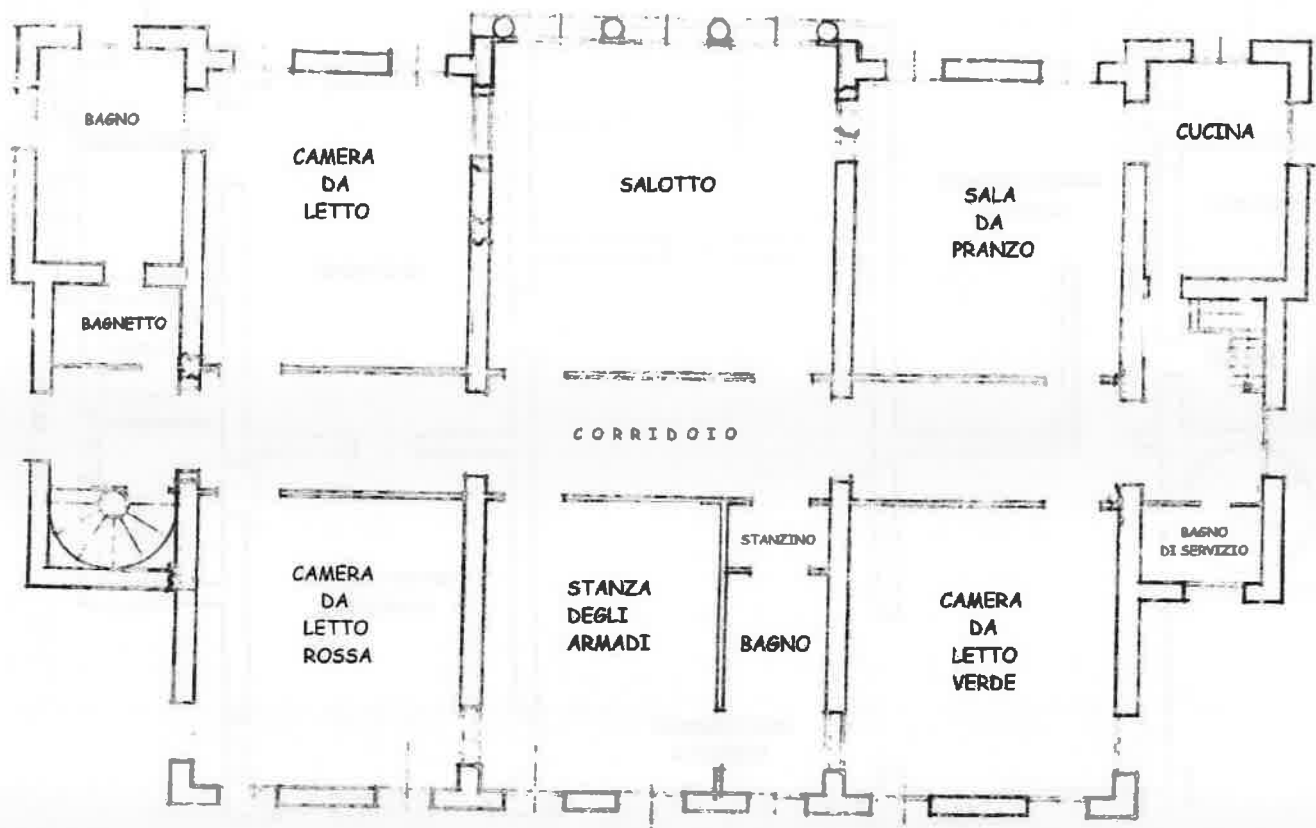
planimetrie



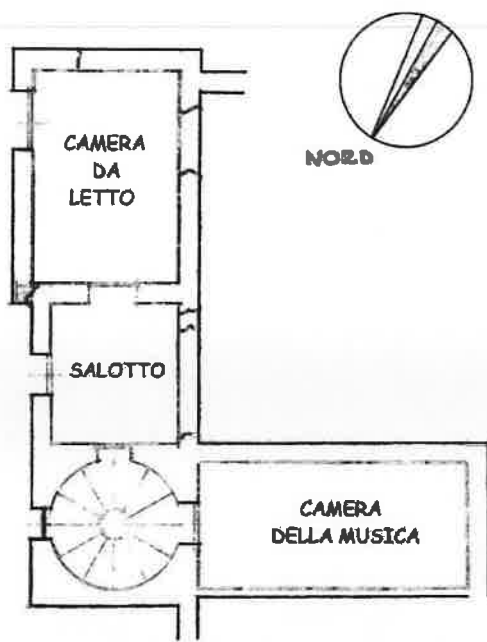
PIANO NOBILE



PIANO TERRA



PIANO PRIMO



MEZZANINI
TRA IL PIANO NOBILE
E IL PRIMO PIANO



